



**HANDICRAFT TIP**

GB

Your home radiates in new splendour. Glass bottle with lighting effect.



## Used items:

<b>46 342 000</b>	Glass bottle, 7 cm ø	1 piece
<b>60 960 000</b>	Decorative peel-off motif Happy, black/gold	1/8 pack
<b>39 339 616</b>	Sand, fine, gold	1/7 box
<b>69 165 000</b>	LED mini fairy lights Cork	1 piece
<b>85 143 02</b>	Decorative feather, white	1/10 pack
<b>33 398 00</b>	Special double-sided adhesive tape, highly transparent	1 m
<b>55 704 616</b>	Glitter ribbon, gold	0.9 m
<b>55 517 576</b>	Yarn, 1 mm ø, black	0.6 m
<b>46 549 000</b>	Small wooden shapes X-mas tree+deer	1 piece
<b>66 075 444</b>	Decorative fir trees, snow-covered, pine green	1 piece

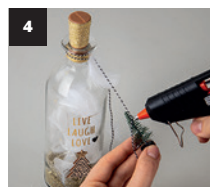
## Additionally you need:

<b>33 363 00</b>	Mini hot melt glue gun
<b>89 377 00</b>	Craft scissors



## Instruction:

- 1 Wash the glass bottle with a dishwashing detergent and water. Follow the instructions for the decorative peel-off motifs and apply the motif to the glass bottle accordingly.
- 2 Pour the golden fine sand into the glass bottle. Distribute the LED mini fairy lights evenly inside the bottle and insert the decorative feathers successively between the fairy lights.
- 3 Stick the double-sided tape around the bottle neck and the cork stopper and then wrap the golden glitter ribbon around.
- 4 Affix the small feathers and the small decorative fir tree to the already hung yarn by means of the mini hot melt glue gun.
- 5 After about 4 hours, remove the last protective foil from the peel-off motif and finally stick the small wooden shape in the middle and under the lettering.



*Rayher.*

[WWW.RAYHER.COM](http://WWW.RAYHER.COM)

More craft ideas and additional material information can be found on our website.

