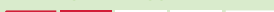


CRAFTING TIP

GB

Panda party.
A panda seldom comes alone...



Used items:

80 073 102	Letterhead A4, plain, FSC Mix Credit	4 sheets
68 067 102	Gift box, 600 ml	1 piece
38 000 576	All Purpose paint, 59 ml, black	1/20 bottle
89 037 00	Plastic wobbly eyes, 10 mm	1 bag
89 176 00	Plastic wobbly eyes to stick, 25 mm	2 pieces
89 193 00	Plastic wobbly eyes to stick, 15 mm	2 pieces
67 292 000	Transfer paper DIN A4	1 sheet
33 396 00	Paper glue	
55 517 576	Yarn, 1 mm ø	1.7 m + 0.8 m
89 324 00	Hole punch pliers, 3 mm ø	

Additionally you need:

89 379 00	Pointed tip paper scissors 11 cm
37 051 000	Brush set
89 079 00	Bone folder
	Pencil
	Sellotape
	Ruler



Instructions:

Print out the original size templates for all 3 craft projects.

Transfer the templates with the transfer paper on the respective substrate: to prevent the motif from slipping during transfer, fix it with some sellotape. Slide the black transfer paper with the black coated side down under the motif paper. Then use a pencil to trace the outlines of the motif.

Panda mask:

Transfer the template to the letterhead DIN A4 as described above.
Cut out the mask from the white letterhead and paint the ears and face by means of the black All Purpose paint and a brush.
Stick on the big plastic wobbly eyes of 25 mm with the paper glue.
Cut the yarn twice to the size of 40 cm.
Use the hole punch pliers to punch a hole at each side and fasten the yarn.

Panda garland:

Work with the 2.5 DIN A4 letterhead:
Transfer the panda bears so that you can cut 2 pieces out of the letterhead.
Cut out the panda bears and fold the arms with the folding bone and a ruler along the body at the dashed lines. Paint the ears, the feet and the face by means of the black All Purpose paint and a brush. Let it all dry well out. Stick on the plastic wobbly eyes of 10 mm with the paper glue. Use the hole punch pliers to punch a hole in each arm and pull the yarn (1.70 m) through the holes. Thread 5 panda bears on.

Panda gift box:

The ears and the face have to be transferred to the remaining DIN A4 letterhead.
Paint the ears (front and back) and the face, flat on the surface, with the black All Purpose paint and a brush. Once the colour application has dried well out, cut out the pattern pieces. Stick them and the plastic wobbly eyes of 15 mm on with the paper glue.

Rayher.

WWW.RAYHER.COM

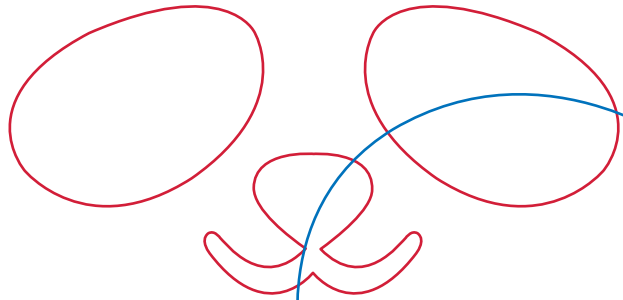
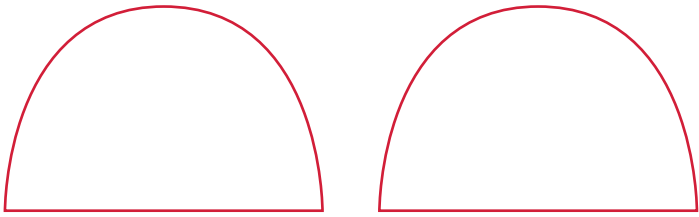
You will find material specifications and instructions on our homepage.

© 2019, Rayher Hobby GmbH

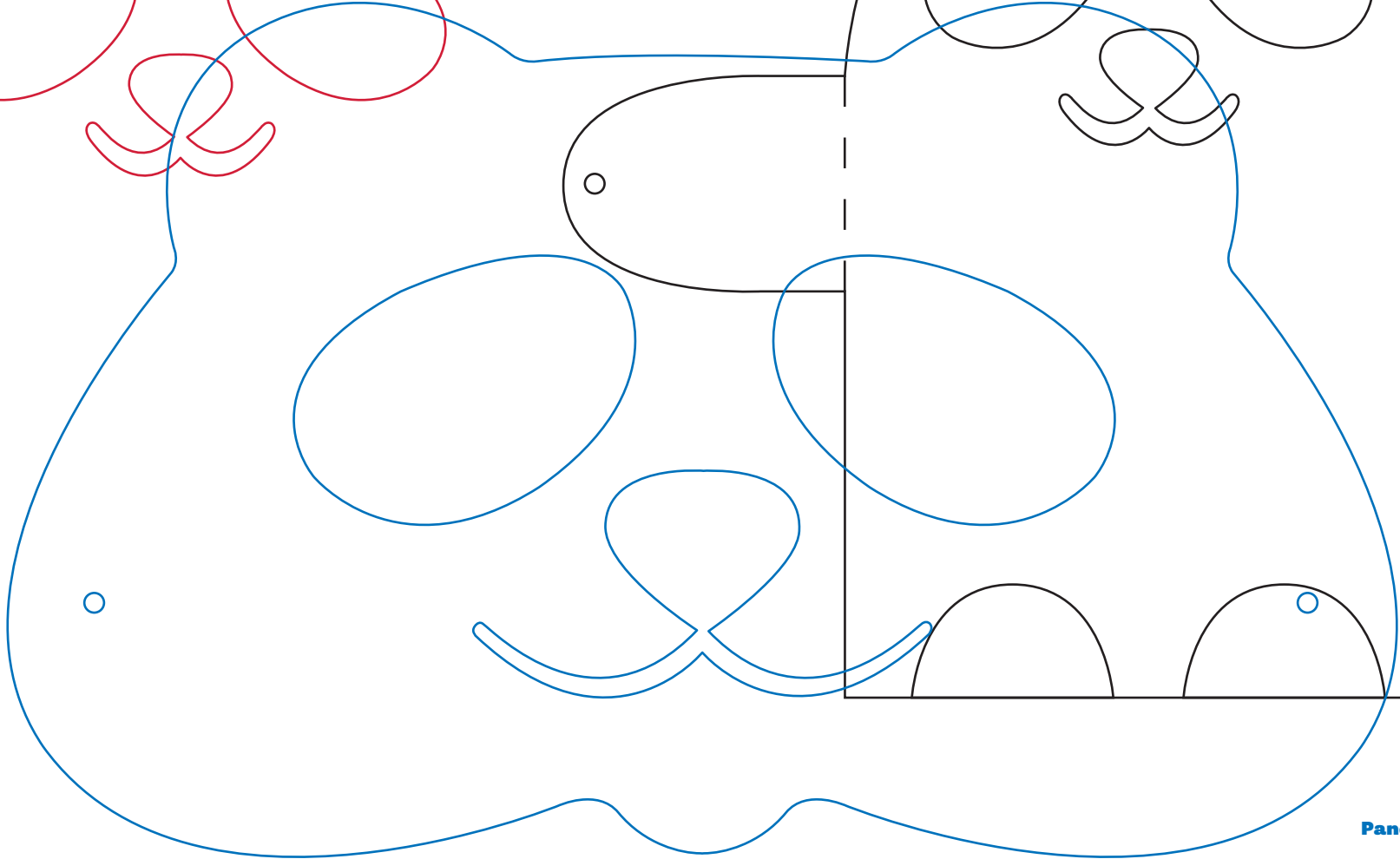
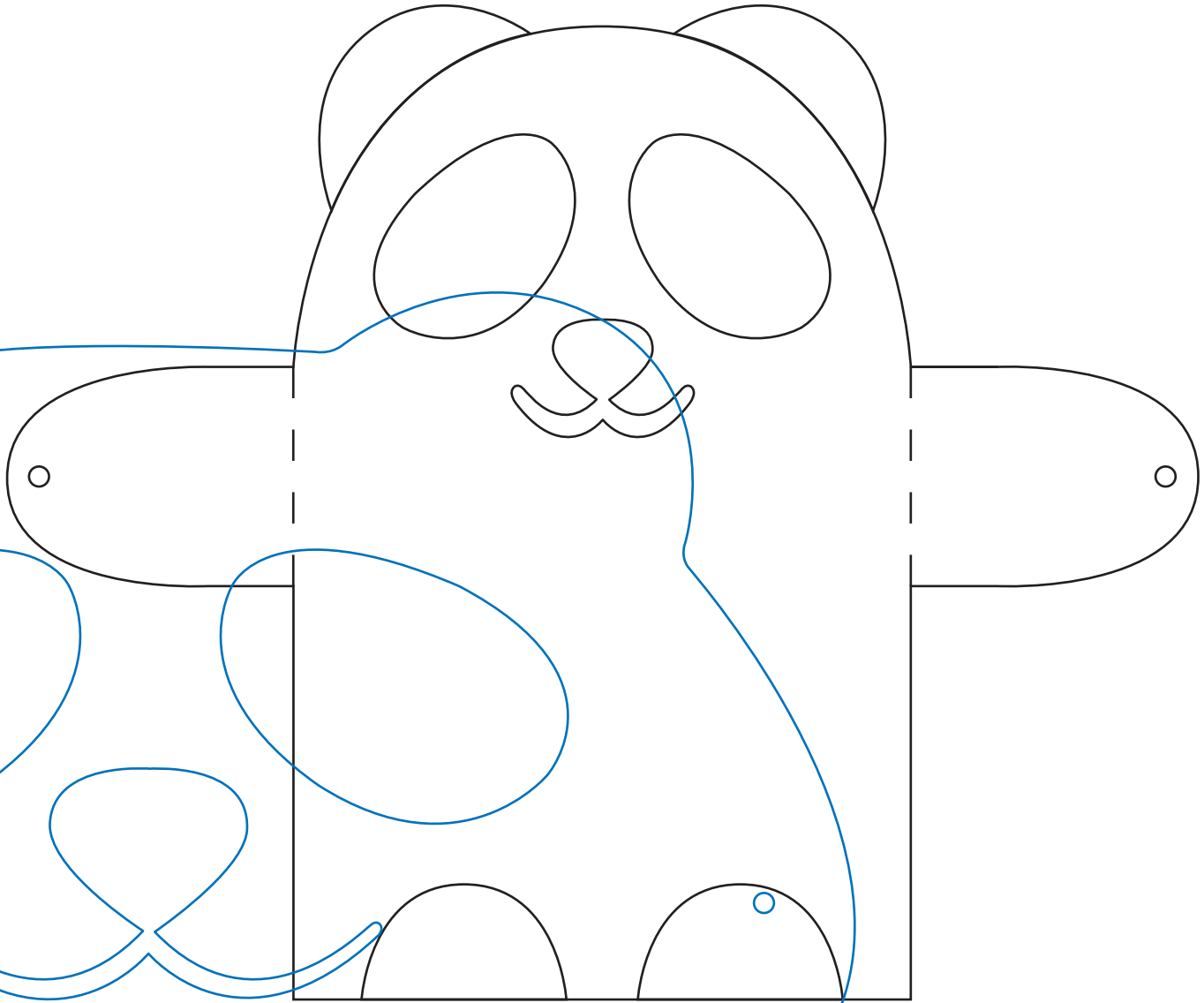


-----	Fold
—————	Cut
○	Hole

Panda gift box



Panda garland



Panda mask