



CRAFTING IDEA

GB

A natural decoration.
Miniature tree.

WWW.RAYHER.COM



Used items:

34 410 102	Casting powder „Raysin“ 200, white	600 g
36 138 000	PET casting mould Decorative oval panel	1 piece
85 032 11	Icelandic moss, light green	1 bag
83 035 576	Leatherette tape, flat, black	83 cm
56 662 000	Bark pieces, 5 cm	approx. 4 pieces

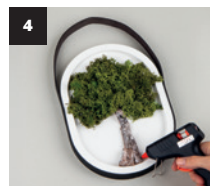
Additionally you need:

30 202 000 Double-sided adhesive tape extra strong, 9 mm
Scissors, hot-melt glue, mixing vessel, poss. sandpaper



Instructions:

- 1 Mix Raysin with water, then cast the decorative panel with resulting compound.
- 2 The panel can be demoulded after about 60 minutes. Leave the panel to harden thoroughly, for several days at a stretch.
- 3 Glue the double-sided adhesive tape to the outer rim of the panel. Leave the upper third free. Glue firmly the leatherette tape around the panel. Ensure that the ends of the tape are stuck to the bottom of the panel.
- 4 Use the moss as a crown of the tree and the bark pieces as a trunk of the tree. Stick these two natural decorative accessories onto the panel.



* Without drying time

Rayher.

WWW.RAYHER.COM

More craft ideas and additional material information can be found on our website.

