



**CRAFTING IDEA**

GB

# Mosaic tile Heart



## Used items:

<b>36 097 000</b>	Casting mould Tile	1 piece
<b>34 410 102</b>	Casting powder Raysin 200	350 g
<b>61 216 31</b>	Craft wooden sticks	
<b>14 861 572</b>	Silky Glass Mosaic mix, matt	1 box
<b>33 385 00</b>	Mosaic glue	1 piece
<b>14 601 00</b>	Joint sealer, white	1 piece

## Additionally you need:

<b>69 078 000</b>	Sandpaper, grit size 400
<b>89 288 00</b>	Aluminium ruler, 30 cm
<b>38 032 00</b>	Metal spatula with flexible blade

Water, kitchen scales, mixing vessel, sponge



## Instructions:

### Making tiles

**1** In order to prevent the tile from being poured out obliquely, it is necessary to work on a horizontal and stable surface. Mix 350 g of the casting powder Raysin 200 with 100 ml of water, stir evenly by means of the craft wooden stick and pour it into the tile-shaped casting mould.

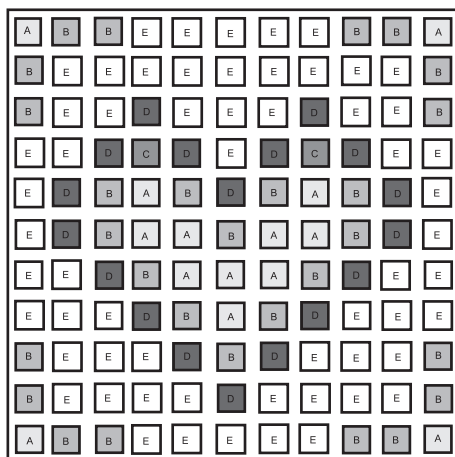
**2** After approx. 1 hour, turn the casting mould over and demould the tile carefully. Now buff a bit the edges with the sandpaper.

**3** The poured out tile should dry thoroughly out, preferably overnight.

### Designing tiles with mosaics

**4** First put the tesserae on the tile according to the pattern. If the pattern matches the one on the template, the single tesserae can be glued on with the mosaic glue. Use a pea-sized amount of mosaic glue per tessera. Finally straighten the horizontal and vertical lines out with the aluminium ruler. Allow them to dry out overnight.

**5** Mix the joint sealer in a mixing ratio of 4:2 (four parts of powder & two parts of water) and stir it vigorously by means of the craft wooden stick. Then spread the joint sealer with the metal spatula into the joints, wipe off the remaining joint sealer with a damp sponge until the tesserae are clean. Let them dry well out.



# Rayher.

[WWW.RAYHER.COM](http://WWW.RAYHER.COM)

© 2019, Rayher Hobby GmbH

You will find material specifications and instructions on our homepage.