



CRAFTING IDEA

GB

Colourful.  
Wreath made of pine slices.

[WWW.RAYHER.COM](http://WWW.RAYHER.COM)



## Used items:

<b>85 288 000</b>	Pine slices, round	2 bags
<b>76 511 49</b>	Pompoms, ø 10 mm, mixed	21 pieces
<b>76 575 49</b>	Pompoms, ø 7 mm, mixed	48 pieces
<b>88 687 00</b>	Wooden shapes: Ladybird	5 pieces
<b>42 000 504</b>	Jute cord on wooden card, sand	60 cm
<b>53 007 49</b>	Felt, 10 colours, assorted	1/10 sheet

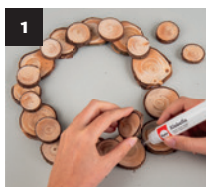
## Additionally you need:

<b>33 487 000</b>	Glue Fix pen
<b>89 381 00</b>	Children's craft scissors



## Instructions:

- 1 Make a circle out of the pine slices and glue the overlapping sections together. Glue another pine slice onto each intersection. Allow the glued wreath to dry thoroughly.
- 2 Cut differently-sized leaves out of green felt.
- 3 Lay the pom-pom flowers on the wreath in a random pattern and glue them firmly in place. Decorate the wreath by adding the cutouts of leaves and wooden shapes "Ladybird".
- 4 To hang it up, glue a jute cord firmly on the rear side of the wreath.



*Rayher.*

[WWW.RAYHER.COM](http://WWW.RAYHER.COM)

More craft ideas and additional material information can be found on our website.

