



**CRAFTING IDEA**

**GB**

Autumnal light for your home.  
Vine wreath to hang up.

[WWW.RAYHER.COM](http://WWW.RAYHER.COM)



## Used items:

<b>65 235 000</b>	Vine wreath, natural, ø 30 cm	1 piece
<b>55 958 000</b>	Decorative ribbon "Nature"	80 cm
<b>85 088 00</b>	Moss, purified	1 bag
<b>55 956 000</b>	Berry twig	2 pieces
<b>42 000 104</b>	Jute cord on wooden card, ø 1.5 mm, ivory	1.2 m
<b>85 287 000</b>	Pine wood slices, oval	6 pieces
<b>46 703 505</b>	Wooden shapes Autumn, natural	1 bag
<b>38 000 428</b>	All-purpose paint, leaf-green	1/30 bottle
<b>38 000 210</b>	All-purpose paint, orange	1/30 bottle
<b>38 000 287</b>	All-purpose paint, classic red	1/30 bottle
<b>33 493 000</b>	Styrofoam pumpkins, assorted	1 pack
<b>53 636 00</b>	Pure wool, mottled, yellow shades	1/10 pack

## Additionally you need:

<b>50 265 000</b>	Clear Stamps – Autumn Forest
<b>28 606 00</b>	Acrylic stamp block
<b>29 206 576</b>	StazOn pigmented ink pad, black
<b>53 278 000</b>	3-needle felting tool

Scissors, hot-melt glue gun

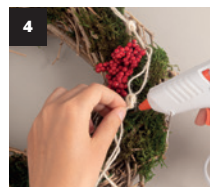
## Instructions:

**1** Start by painting the wooden shapes to scatter Autumn. To do this, take the leaf-green, orange and classic red All-purpose paints. Then coat the desired quantity of styrofoam pumpkins with felt (two were coated in our instance). For this purpose, put a small amount of felt below the stem of the pumpkin. Hold the felt device vertically and move it carefully up and down. Gradually add small amounts of felt and cover the whole pumpkin by means of the felting tool. Now put some brown felt around the stem and along the ribs and felt them as well.

**2** Stamp your autumn message on a pine wood slice using the Clear Stamps - Autumn Forest.

**3** Glue the desired amount of moss onto the vine wreath and between its twigs with the hot-melt glue gun.

**4** Snap off the berry sticks and stick them on as well. Cut 1.2 m of the jute cord and lay it in the middle. Tie several knots in the cord with a spacing of about 10 cm between each knot. Then decorate the cord on the right-hand side of the wreath along the berry twigs.



**5** For suspension, wrap the decorative ribbon once around the top of the wreath and glue the remaining ribbon together. Then glue the two felted styrofoam pumpkins in the middle of the lower part of the wreath. Finally, glue the painted wooden shapes to scatter and the pine wood slices onto the wreath and the ribbon that acts as a suspension hook.

Rayher.

WWW.RAYHER.COM

More craft ideas and additional material information can be found on our website.

