

**CRAFTING IDEA**

GB

Gold shining candlelight.  
Cement-bowl made out of  
5-in-1 creative-cement.

[WWW.RAYHER.COM](http://WWW.RAYHER.COM)



## Used items:

|                   |                          |                     |
|-------------------|--------------------------|---------------------|
| <b>34 463 558</b> | Creative-cement 5-in-1   | approx. 250 g       |
| <b>35 014 616</b> | Extreme Sheen, gold      | approx. 1/30 bottle |
| <b>38 000 576</b> | All-purpose paint, black | approx. 1/50 bottle |
| <b>69 078 000</b> | Sandpaper                | 1 piece             |
| <b>56 874 000</b> | Glass tealight holder    | 1 piece             |
|                   | balloon, tealight        |                     |

## Additionally you need:

|                   |   |       |
|-------------------|---|-------|
| <b>37 080 000</b> | Paintbrush set Hobby Kreativ  | 1 set |
| <b>37 041 000</b> | Brush washer pot  |       |
|                   | Sturdy painting mat, mixing vessel, solid container as balloon stand, disposable gloves, kitchen roll, aluminium foil, scales |       |

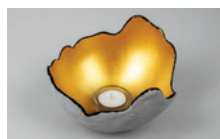
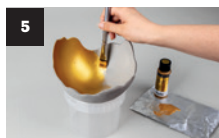
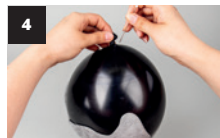
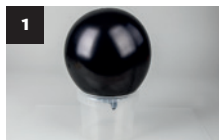
## Instruction:

**1** Inflate the balloon and knot it well so that no air escapes. Place the balloon on a suitable vessel in a stable manner with the knot facing down.

**2** For the next step, use disposable gloves. Mix about 250 g of creative-cement 5-in-1 with about 35 ml of water. When mixing, add the water slowly, little by little, while kneading continuously. Knead the crumbly mixture quickly, preferably on a mat (e.g. a sturdy painting mat), until it becomes easily mouldable.

**3** Apply the cement mixture to the balloon with your hands and gently model the mixture around the balloon. The cement mixture develops a slight flowing motion, so you need to apply a little finger pressure. With a little help from the palms of your hands, spread the mixture irregularly over the balloon. This creates various and beautiful edges on the cement-bowl.

**4** Let the bowl dry out on the balloon for at least 2 hours (preferably overnight). Then you can let the air out of the balloon by piercing it with a small needle. Rub carefully down small, unwanted edges with sandpaper.



**5** Paint completely the inside of the cement-bowl with gold Extreme Sheen paint. A second paint coat may be recommended. Allow it to dry out.

**6** Finally, paint the edging of your moulded cement-bowl with the black All-purpose paint and let it dry out once again.

**7** Complete your designed cement-bowl with a tealight candle holder and a tealight candle.

\*Without drying time

*Rayher.*

[WWW.RAYHER.COM](http://WWW.RAYHER.COM)

More craft ideas and additional material information can be found on our website.

