



CRAFTING IDEA

GB

In the world of gnomes.  
Christmassy bamboo ring.

[WWW.RAYHER.COM](http://WWW.RAYHER.COM)



## Used items:

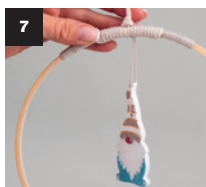
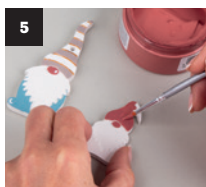
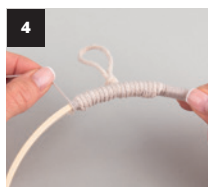
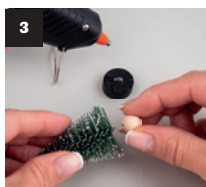
<b>64 574 505</b>	Bamboo ring with suspension cord, 22cm ø, natural	1 piece
<b>36 122 000</b>	Silicone casting mould Gnome	1 piece
<b>36 990 00</b>	Casting powder "Raysin" 200	30 g
<b>46 798 505</b>	Wood decor Gnome family, natural	3 pieces
<b>66 059 000</b>	Deco-Snowy Fir tree	3 pieces
<b>62 486 00</b>	Raw wood balls, drilled, ø 12 mm	3 pieces
<b>85 004 11</b>	Icelandic moss, light green	some
<b>35 077 100</b>	Allround Paint acrylic, snow-white	some
<b>35 077 566</b>	Allround Paint acrylic, bluish grey	some
<b>35 077 506</b>	Allround Paint acrylic, sandalwood	some
<b>35 078 620</b>	Allround Paint acrylic, metallic, brill. gold	some
<b>35 047 288</b>	Chalky, brick-red	some
<b>44 009 502</b>	Macramé yarn, ø 1 mm, eucalyptus	approx. 3 m

## Additionally you need:

Scissors, hot-melt glue, paintbrush, mixing vessel, poss. sandpaper

## Instructions:

- 1 Fill first the large gnome (with a hole in the middle), then the small one without hole with a mixture of 30 g of Raysin and 8.5 g of water (follow the instructions on the packaging).
- 2 After 1 hour drying, carefully demould them. But they still need to be left to dry for another day or two. If necessary, you can sand their edges from the rear side using sandpaper.
- 3 Remove the decorative fir trees from their black wooden base, then insert each one into the raw wood ball and secure them in place with hot-melt glue.
- 4 Fix in place the macramé yarn onto the bamboo ring with a drop of hot-melt glue at about 3 cm from the suspension cord and wind it evenly along the ring over a length of about 3 cm. Cut off the exceeding yarn and fix its end with hot-melt glue. Do the same on the other side.
- 5 Then paint the Raysin and wooden gnomes with the matching paints.
- 6 Decorate the lower part of the ring with Icelandic moss and secure it in place with hot-melt glue.
- 7 Hang firmly the painted Raysin gnome in the middle of the upper part of the ring using yarn. Adjust the suspension hook as desired. Glue the little painted Raysin gnome to the part of the ring adorned with Icelandic moss using hot-melt glue.
- 8 Glue firmly the three wooden gnomes to the lower part of the ring.
- 9 Next, add the decorative fir trees. Attach two fir trees to the ring using macramé yarn (fix them with hot-melt glue) and glue the third one askew onto the large painted gnome.



TIME REQUIRED  
**30 MINUTES**

LEVEL OF DIFFICULTY

### Used items:

<b>65 397 505</b>	Viennese wickerwork, natural	50 × 7.5 cm
<b>65 029 00</b>	Rattan strip, 4 mm	1.5 m
<b>64 670 505</b>	Wood panel set L, natural	15.5 cm and 15 cm
<b>62 458 00</b>	Raw wood balls, ø 30 mm	1 piece

### Additionally you need:

**30 070 000** Double-sided adhesive tape extra strong  
Hot-melt glue, scissors

### Instructions:

- 1 Prepare a Viennese wicker cutting measuring 50 × 7.5 cm. Glue the red adhesive tape along the edge of the small raw wood panel. Then remove the protective foil.
- 2 Glue the Viennese wicker cutting flush to the adhesive tape strip. Its two short sides should be glued together by means of the hot-melt glue gun.
- 3 Glue the rattan strip measuring 50 cm to the top and the bottom edge of the box by means of the hot-melt glue gun.
- 4 Glue the rattan strip measuring 50 cm also to the large round wood panel by means of the hot-melt glue gun.
- 5 Then glue the raw wood balls using the hot-melt glue gun to the middle of the large wood panel. They will serve as a lid.

# Rayher.

**WWW.RAYHER.COM**

More craft ideas and additional material information can be found on our website.

