

Rayher

Autumn/Winter 2025

GB



EC-Norm for the safeguarding of toys

Dear customers,

The legislator stipulates that toys must comply with an EC standard and be marked with the „CE“ symbol.

Our items are mainly handicraft materials, i.e. starting materials. Thus, they are not subject to labelling and therefore do not have to comply with the strict regulations that apply to toys (e.g. danger from swallowing small parts such as wooden beads etc.). Please make parents and teachers aware of this issue.

Products that have not been tested and labelled, or products made from them, should generally be kept out of the hands of toddlers under 36 months. Children under age 14 should do handicrafts under adult supervision, by taking the general safety precautions (when it comes to knife, fork, scissors, light ...).

We wish all users many enjoyable hours of crafting and a lot of joy with the things they have made.



All items with a yellow mark are **novelties**.

23 102 576 (4)
Metal lampshade frame, 17cm ø
16cm, conical, black coated
black



Please refer to our latest price list for the current terms & conditions.



Please note: the number in brackets refers to the minimum purchase. Please order only at the following rate: e.g. (4) = 4, 8, 12 etc.

23 102 576 (4)
Metal lampshade frame, 17cm ø
16cm, conical, black coated
black



Please pay attention to FSC®-certified products!

Content

2 – 17	BE NATURE – BE CREATIVE
18 – 29	AUTUMN
30 – 51	ADVENT CALENDAR
52 – 81	ADVENT WREATH
82 – 105	CHRISTMAS DECORATION
106 – 131	SECRET SANTA WORLD
132 – 159	NORDIC HOUSES
160 – 177	MUST HAVE
178 – 195	JEWELLERY – CLICK, MIX & MATCH
196 – 207	JEWELLERY MUST HAVE

From natural interior design

Be nature – be creative

Reconnecting with nature and letting it be part of our lives. By living in harmony with nature, we create more than just a harmonious environment for ourselves: by using renewable raw materials in our creative works, we are acting in a sustainable manner. And the best is yet to come: you are bringing the beauty of nature from the outside in. Working with natural materials, feeling them to the touch and experimenting with them: this is the trend we're continuing into the next Autumn/Winter season by combining nature and lamps.

Light is the faithful companion in our lives – especially during the dash season, when the days grow shorter and the nights longer. It has the power to boost our mood and create an atmosphere of well-being. Lamps provide the very same feeling in your home. But lamps are more than just a source of light, they're also – especially if self-made – an expression of individuality and creativity. So why not give your customers the opportunity to create lamps with a natural look that fully reflects their personal lifestyle?

How about combining the rough charm of the industrial look with warm, natural elements? Or casting bowls with Raysin, then adorning them with natural ropes? However, the modern design is by no means left behind; quite the contrary, it blends timeless elegance with a flexible option to remodel quickly. With different natural cords, your customers can quickly create a variety of interesting looks.



CREATIVE

The perfect combination of materials

Being creative also means, among other things, combining different materials to create new looks. Metal meets nature – it may sound like a contradiction at first. But that's certainly not the case here, because the warm natural material

blends perfectly with the cool metal of the lampshades or with bowls out of Raysin. With the new Be Nature products, creativity is child's play: for DIY beginners and professionals alike.

INDIVIDUAL

Lamps with an individual look

Everyone has their own interior style, and creative minds – like your customers – focus on the following: individuality! Not the modern lamps you find in catalogues, but self-made lamps, of course.

With a vast array of natural materials and different lamp bases, it's easy for any DIY enthusiast to express their individuality.

NATURAL

Nature in the spotlight

Whether it's about water hyacinth straw ropes, seaweed twines, corn leaves braids or reed grass ropes, each one looks different and feels different to the touch.

Renewable natural materials stand in sharp contrast with the cool metal bases of the lamps or the bowls cast out of Raysin. Thus, every lamp gets one-of-a-kind natural look.









23 102 576 (4)

Metal lampshade frame, 17cm ø
16cm, conical, black coated
black



- **Metal drum lampshade frame**, coated in black
- For making a lampshade
- Intended for a **shade diameter of 42 mm**
- Suitable e.g. for a lamp socket with switch (item no.23099576) and pendant luminaire socket (item no.23100576)
- Also suitable for metal table lamp base with screw ring (item no.23101576)
- Great for designing with natural materials, yarns, etc.

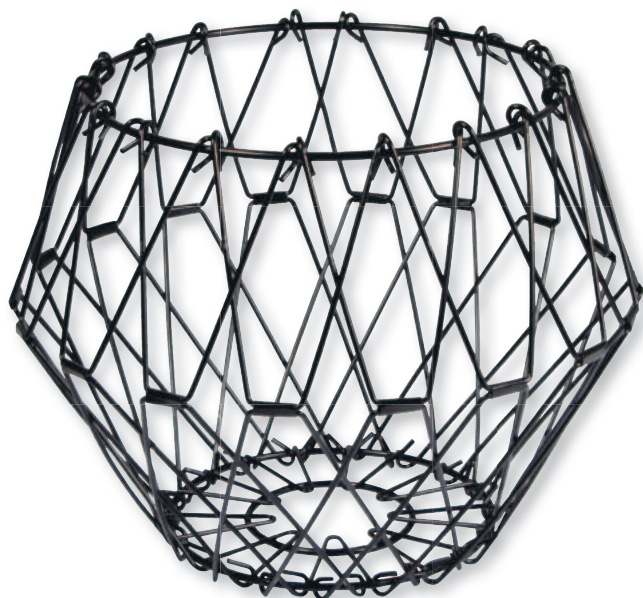


23 103 576 (4)

Metal lampshade frame, 20cm ø
24cm, diamond, black coated
black



- **Metal lampshade frame, diamond-shaped**, coated in black
- For making a lampshade
- Intended for a **shade diameter of 42 mm**
- Suitable e.g. for a lamp socket with switch (item no.23099576) and pendant luminaire socket (item no.23100576)
- Also suitable for metal table lamp base with screw ring (item no.23101576)
- Great for designing with natural materials, yarns, etc.



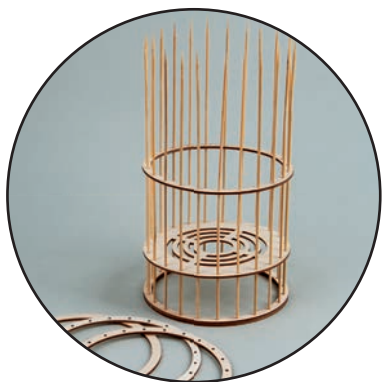
23 104 576 (4)

Flexible wire basket, 32cm ø
foldable, black coated
black



- Flexible metal lampshade frame, coated in black
- Can be **shaped in a versatile manner**
- Can also be used e.g. as a decorative basket, storage basket, etc.
- Suitable e.g. for a lamp socket with switch (item no.23099576), lamp socket with switch (item no.23099576) and pendant luminaire socket (item no.23100576)
- Intended for a shade diameter of 42 mm
- Space-saving storage
- Great for designing with natural materials, yarns, etc.

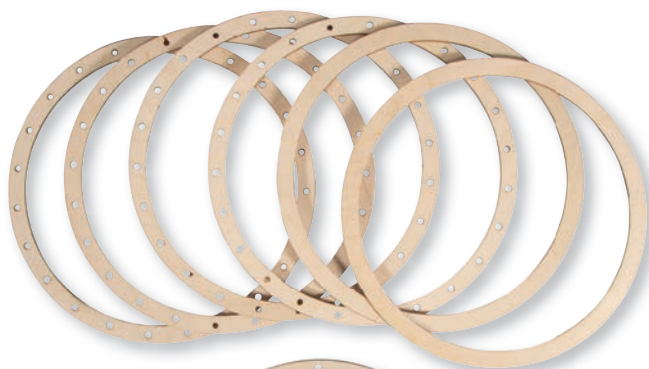




62 028 00 (10)

Wooden spits

ø 3 mm, length 30 cm, tab-bag 10 pcs.



23 105 505 (6)

Wood ring set for lamps, FSC Mix Credit

ø 17cm, assorted, tab-bag 7pcs natural



The mark of responsible forestry



- **Wood ring set** for designing **individual lamps** using all kinds of materials that can be braided, e. g. seaweed twine (item no.41012000), corn leaf rope (item no.41009000), macramé yarn (item no.44007), wicker etc.
- Suitable for a lamp socket with switch (item no.23099576), pendant luminaire socket (item no.23100576) and lamp socket with switch (item no.23099576)

Contents:

- 1 plate for a shade diameter of 40 mm, wood thickness 3 mm
- 2 rings with ring thickness of 1cm, without holes
- 4 rings with ring thickness of 1cm, with 23 holes of about 3mm each



23 101 576 (4)

Metal table lamp base with ring nut
32cm, with switch, for E27, box 1pc
black

- Metal table lamp base, high-quality steel, matt black
- E27 bulb socket up to max. 40 W of power
- Cable length: 1.55m
- Rocker switch and Euro plug (type C)
- Lamp base covered at bottom with a soft foam rubber disc for smooth set-up
- Easy replacement of lampshades thanks to the screw ring
- The metal table lamp base can be combined with wood lamella lamps of Rayher and metal lampshades (e.g. item no.23102576, 23103576 or 23104576)



23 100 102 (5)

Lamp socket Pendant Luminaire, f.E27sock.
100cm, w. ring nut, tab-bag 1pc
white



23 100 576 (5)

Lamp socket Pendant Luminaire, f.E27sock.
100cm, w. ring nut, tab-bag 1pc
black



23 099 102 (4)

Lamp socket with switch, f. E27 socket
180cm, w. ring nut, tab-bag 1pc
white



23 099 576 (4)

Lamp socket with switch, f. E27 socket
180cm, w. ring nut, tab-bag 1pc
black



41 006 000 (6)

Reed grass rope, twisted, 8mm ø
10m, natural, bunch 1pc

10m

- Reed grass rope **twisted** from **dried reed grass**
- **Natural product:** quickly renewable and extremely sustainable material
- Suitable for winding and gluing
- Sturdy and resistant
- For striking and special eye-catching effect, and trendy decorations in the craft sector



41 007 000 (6)

Reed grass ribbon, 3-ply braided
10m, 1cm wide, natural, bunch 1pc

10m

- Reed grass strip **plaited into braid** from **dried reed grass**
- **Natural product:** quickly renewable and extremely sustainable material
- Suitable for winding, gluing, sewing etc.
- Sturdy and resistant
- For striking and special eye-catching effect, and trendy decorations in the craft sector





41 010 000 (6)

Reed grass ribbon, 5-ply braided
3m, 2.5cm wide, natural, bunch 1pc

3m

- Reed grass strip **twisted** from **dried reed grass**
- **Natural product:** quickly renewable and extremely sustainable material
- Suitable for winding, gluing, sewing etc.
- For striking and special eye-catching effect, and trendy decorations in the craft sector



41 009 000 (6)

Corn leaves rope, twisted, 5mm ø
10m, natural, bunch 1pc

10m

- Corn leaves rope **twisted** from **dried corn leaves**
- **Natural product:** quickly renewable and extremely sustainable material
- Suitable for braiding, sewing, weaving, gluing etc.
- Supple
- For striking and special eye-catching effect, and trendy decorations in the craft sector





41 008 000 (6)

Corn leaves braid, 5-ply braided

3m, 2.5 cm wide, natural, bunch 1pc

3m

- Corn leaves braid **plaited** from **dried corn leaves**
- **Natural product:** quickly renewable and extremely sustainable material
- Suitable for winding, gluing, sewing etc.
- Supple
- For striking and special eye-catching effect, and trendy decorations in the craft sector



41 012 000 (6)

Seaweed twine, twisted, 4mm ø

10m, natural, bunch 1pc

10m

- Seaweed twine **twisted** from **dried seaweed**
- **Natural product:** quickly renewable and extremely sustainable material
- Suitable for braiding, winding and gluing
- Sturdy and soft
- For striking and special eye-catching effect, and trendy decorations in the craft sector





41 011 000 (6)

Water hyacinth straw rope, 3-strand braid

9,5m, 1.2cm wide, natural, bunch 1pc



- Water hyacinth straw rope **plated into braid** from **dried water hyacinth grass**
- **Natural product:** quickly renewable and extremely sustainable material
- Suitable for winding, twining, sewing, gluing etc.
- Supple
- For striking and special eye-catching effect, and trendy decorations in the craft sector



65 029 00 (1)

Rattan strip

roll 125 g

4 mm



47 025 000 (1)

Special offer display "Be Nature" lamps

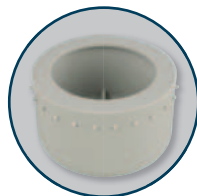
We reserve the right to make changes to the equipment and packaging designs.



36 196 000 (6)

Silicone mould Bowl 11cm w.pierced
edge

ø 11cm x H 6.5cm



- Casting mould made of high-quality **silicone**
- Particularly elastic and resilient material
- **Reusable**
- Frost- and heat-resistant (from -40°C up to 230°C)
- Very easy to demould and dimensionally stable
- Ideal for casting with **creative-cement**, **creative-cement 5-in-1**, **Raysin**, casting resin

Tipp for use:

- The cast bowl with perforated rim lets you decorate the rim by stringing a cord, string, raffia or wire through the holes: ideal for mixing materials to perfection!



36 197 000 (6)

Silicone mould Bowl 18cm w.pierced
edge

ø 18cm x H 6cm



36 198 000 (6)

Silicone mould Coaster w.pierced dge

ø 17cm x H 4cm



51 160 01 (10)
Paper cord with wire, 2mm ø
roll 25m
black



55 832 576 (6)
Sisal rope in ball, 1mm ø
50m
black
100% Sisal



55 831 000 (6)
2-strand cotton rope, 4mm ø
10m
70% Cotton, 30% Polyester



52 149 02 (10)
Raffia rayon, mat
hank 20 m
white
100% Viscose



52 151 31 (5)
Raffia "florist"
bundle 150 g
natural



From creative cosiness

This autumn will be a bright one

Autumn is just around the corner and we're slowly making our way back to the warmth of home. The days are getting shorter, the air fresher and nature occurs in bright colours: gold, red and orange. It's the perfect time to make yourself comfortable at home and give free reign to your creativity!

The autumn season invites you to restyle your home with pleasant, welcoming decorations. The right materials make all the difference, offering warm colours that create a cosy autumn atmosphere.

Whether it's about colourful door wreaths, individual table decorations or original gifts created using autumnal materials such as acorns, wooden elements or dried leaves – high-quality materials give rise to a bright, unique decor that creatively enhances your customers' homes.

Making lanterns is one of the highlights of the autumn season. Whether being brightly coloured, natural or extravagantly decorated, your creative customers can choose between our natural-looking basic variant for individual designing or our lanterns with specific motifs.

And even the little ones will be rewarded with our complete craft kits: cute and fun felt forest animals are quickly created.

The trendy theme of moulding is still topical! Our silicone casting moulds are so practical that even demoulding is child's play. Whether it's about leaves, mushrooms or pumpkins – individually cast and designed – they'll become an integral part of your customers' four walls.

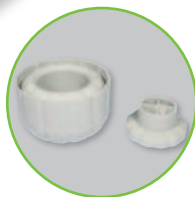
Autumn has its very own magic: it's colourful and bright, while at the same time inspiring creativity.





36 162 000 (6)

Silicone mould 3D Pumpkin, 10cm ø
with lid, 8.5cm high, tab-box 1pc



- Casting mould made of high-quality silicone
- Particularly elastic and stable material
- Reusable
- Frost- and heat-resistant (from -40°C up to 240°C)
- Very easy to demould and dimensionally stable
- Perfectly suitable for casting with **creative-cement**, **Raysin** and **casting resin**

3D

Usage tips:

- Versatile application possibilities: perfect for **candles** (tealight and pillar candles), for casting with **wax** or as a **stylish storage tin** and **autumnal table decoration**
- 2-part casting mould with removable lid



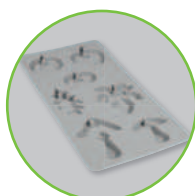
36 123 000 (5)

Silicone mould pumpkin, mushroom, leaf
14.5x26x1cm, 7 moulds, box 1pc



Exclusive
by Rayher

für pour for
7



- Casting mould made of high-quality silicone
- Particularly elastic material
- Reusable
- Frost- and heat-resistant (from -40°C up to 240°C)
- Very easy to demould and dimensionally stable
- Ideal for casting with **creative-concrete**, **decorative concrete**, **Raysin**, **cast resin** and **wax**

Application tip:

- The moulds can be filled in at **different height levels**: at low level for **filigree pendants/figurines** and high level for **decorative display**



The mark of responsible forestry

DIY Set

Exclusive by Rayher



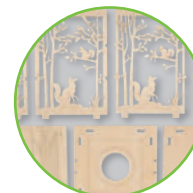
64 644 505 (4)

Wood Lantern Basic, FSC Mix Credit
15.3x15.3x26.5cm, 15-part, box 1 set
natural



64 030 505 (4)

Wood lantern Forest, FSC Mix Credit
15.3x15.3x26.5cm, 23-part, box 1set
natural



- DIY wooden lantern "Basic"
- As decorative element in the children's room or as lantern for Halloween and St. Martin's Day
- Fitted with a handy handgrip

Usage tips:

- Design the wooden lantern with paint, glitter or effect-foils (e.g. item no.23 092 000)
- Illuminate it with **LED tealights** (item no.69 258 102) or with **LED string lights** (items no.69 169 159 + no.69 137 000)

- **Please note:** only illuminate it with LED lighting elements, do not use open fire!

- DIY wooden lantern with autumn inspiration
- Suitable as lantern or decorative element
- Fitted with a handy handgrip

Usage tips:

- Design the wooden lantern with paint, glitter or effect-foils (e.g. item no.23 092 000)
- Illuminate it with **LED tealights** (item no.69 258 102) or with **LED string lights** (items no.69 169 159 + no.69 137 000)

- **Please note:** only illuminate it with LED lighting elements, do not use open fire!



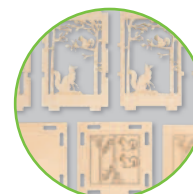
64 031 505 (6)

W.table lantern Pumpkin, FSC Mix Credit
8.5x8.5x11.7cm, 11-part, 1 set
natural



64 032 505 (6)

W.table lantern Forest, FSC Mix Credit
8.5x8.5x11.7cm, 15-part, 1set
natural

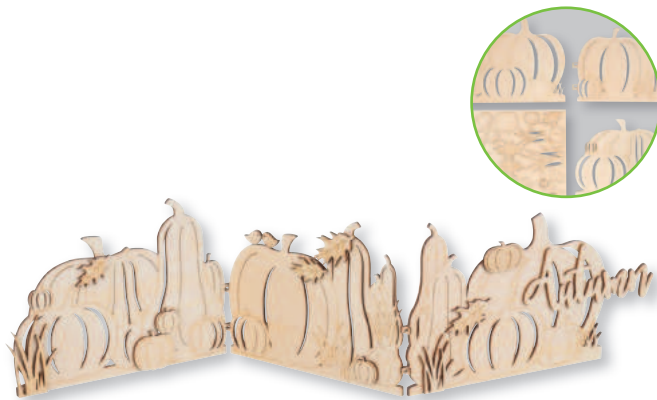


- DIY table lantern with a tealight candleholder
- Autumnal decorative item
- Easy assembling

Application tips:

- Embellish the table lantern with paint, glitter or mirror effect foil (e.g. item no. 23 092 000)
- Illuminate it with **LED tealights** (item no. 69 258 102)

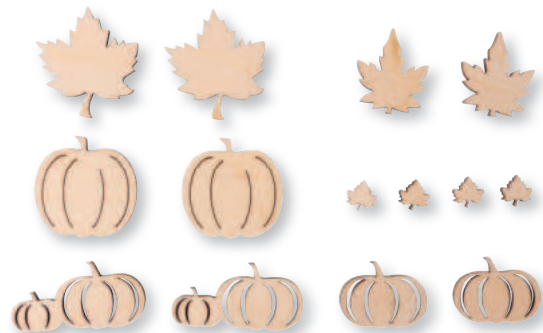
- **Please note:** only illuminate it with LED lighting elements, do not use open flame!



64 029 505 (4)
Wood decor.display, FSC Mix Credit
3x 20.2x10.5cm, pumpkin,20-part,box 1set
natural



The mark of
responsible forestry



46 703 505 (8)
Wooden shapes Autumn, FSC Mix Credit
1-4.5cm, assorted, tab-bag 14pcs
natural



The mark of
responsible forestry



46 704 505 (8)
Wooden tag Leaf, FSC Mix Credit
3.8+8.8+10.4cm ø,+cord, tab-bag 5pcs
natural



The mark of
responsible forestry



50 249 000 (3)
Punch template Mushrooms
1.6-3.9 cm x 0.9-5.0 cm, tab-bag, 9pcs



50 251 000 (6)
Clear Stamps - Autumn Luminaires
102.5x97mm, 13 motifs, tab-bag 1sheet



50 265 000 (6)
Clear Stamps - Autumn Forest
102.5x97mm, 14 motifs, tab-bag 1sheet



33 493 000 (5)
Styrofoam pumpkins assorted
1pc 7x6cm, 2pcs 5.5x4cm, bag 3pcs



33 494 000 (5)
Styrofoam pumpkin
11x10cm 1pc



67 385 000 (4)
Papier-mâché Pumpkin,
FSC Recycled 100%
15cm ø 1pc



46 292 000 (6)
Deco-acorn with hanger nature
2x3.5cm, PVC box 6pcs



55 806 000 (3)
Birch wood slice, 25-28cm ø
2.5cm thick



65 201 000 (6)
Wood disc, round, natural, 10-12cm ø
bundle 3pcs



55 807 000 (2)
Poplar wood slice, 29-31cm ø
2.5cm thick



65 395 000 (6)
Maidenhair vine, decorative twig
natural, dried, bag 50g



85 319 000 (8)
Birch disc round nature
Ø15-17cm x 2cm height, bag 1pc



85 439 000 (5)
Birch disc, oval, natural
21-23cm x 10cm x 2cm high, bag 1pc



65 243 505 (10)

Wooden discs to hang, 6.5-7.5cm ø
tab-bag 4pcs
natural



85 288 000 (5)

Pine slices, round
Size: 3cm-5cm, tab-bag 100g



89 529 00 (5)

Set of gimlets
2+3+4+5mm, tab-card 4pcs



85 287 000 (5)

Pine wood slices, oval
Size: 4cm-8cm, tab-bag 100 g





25 cm ø



65 007 000 (4)
Willow wreath, unpeeled
ø 25cm x 6cm,

30 cm ø



65 008 000 (4)
Wreath of willow, unpeeled
ø 30cm x 7cm,



25 cm ø



65 014 000 (4)
Wreath of willow, peeled
ø 25cm x 6cm,

30 cm ø



65 018 000 (4)
Wreath of willow, peeled
ø 30cm x 7cm,



25 cm ø



65 392 561 (4)
Willow wreath, wiped to white
ø 25cm x 6cm
silver grey

30 cm ø



65 393 561 (4)
Willow wreath, wiped to white
ø 30cm x 7cm
silver grey





65 394 505 (10)
Twig pieces, natural, 0.2-1.2cm ø
7.5cm, bundle approx. 200g natural



65 224 000 (12)
Wooden logs, nature, 0.8-1cm ø
4-6cm, bunch 20pcs



65 229 000 (6)
Wooden logs, nature, 0.8-1.2cm ø
20-25cm, bunch 20pcs



65 231 000 (8)
Wooden logs, halved, nature
10-12cm x 2-2.5cm, bunch 20pcs



56 662 000 (6)
Bark pieces
5cm, tab-bag 90g



55 922 000 (8)
Acorn cone mix
assorted 2-4cm, tab-bag 27pcs



55 314 00 (4)
Moss ribbon
5cm, roll 2m



55 318 00 (3)
Moss ribbon
10cm, roll 2m



85 004 (5)
Icelandic moss
tab-bag 30 g
See colour choice



85 032 (3)
Icelandic moss
tab-bag 100 g
See colour choice

85 003 (1)
Icelandic moss
bag 1 kg
See colour choice



Colour choice
85 003..



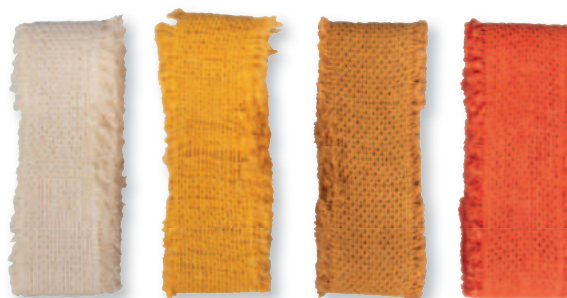
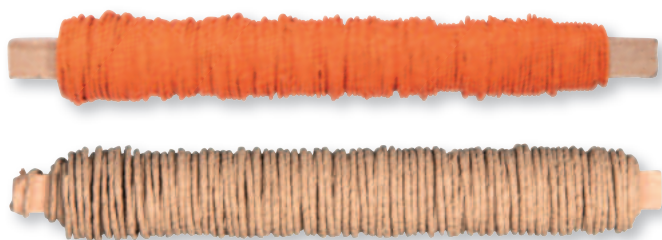
11
light green



13
dark green



31
natural



24 116 (10)
Paper-covered wire, 0.55mm ø
on a wooden reel 50g, tab-bag
20m
See colour choice

Colour choice
24 116..



208
mandarine



505
natural



55 958 000 (20)
Decorative ribbon "Nature"
40mmx2m, sorted, 20 pcs in total
100% Cotton

20x



85 491 104 (8)
Dried flower bouquet
18-20cm, tab-bag 1pc
ivory



85 491 210 (8)
Dried flower bouquet
18-20cm, tab-bag 1pc
orange



46 607 999 (8)
Wood shapes to scatter Toadstools
4-4.5cm, with adhesive dot, tab-bag 8pcs
coloured



46 766 000 (8)
Wooden shapes Mushrooms, FSC 100%
3.2-4.5cm, w.adhesive dot, tab-bag 11pcs



56 993 000 (10)
Wooden fly agaric
3,3cm, 2 colours, tab-bag 5pcs.



46 762 000 (8)
Wooden shapes to scatter Fox, FSC
100%
3.5x4cm, w. adh. dot, tab-bag 7pcs

Textile specification:
Beard: 100% polyester
Bow: 100% jute



46 655 999 (6)
Cone gnomes to hang up
3x11cm, assorted, box 3pcs
coloured

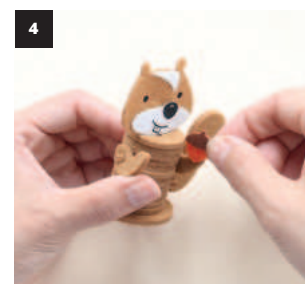
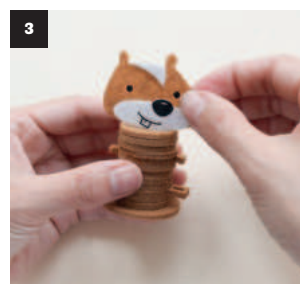
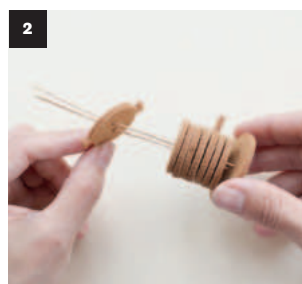
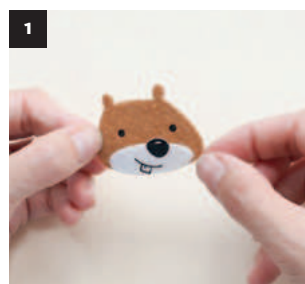


43 007 000 (6)

CK Funny forest animals

H 7.6-15.2cm, 112-part, cardboard 1set

100% Polyester



- Comprehensive DIY kit „Lustige Waldtiere“ for making forest animals, mushrooms and trees out of felt
- Quick, easy and handy - the perfect solution for the next creative children's birthday party or afternoon filled with craft activities



53 580 000 (6)

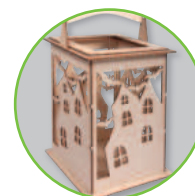
Crafting kit wood-whispering

5.5cm, Key-holder, box 4pc



62 893 505 (4)
Wood lantern Pumpkin, FSC Mix Credit
15.3x15.3x26.5cm, 15-part, box 1set
natural

Exclusive
by Rayher



62 895 505 (4)
Wood lantern Bat, FSC Mix Credit
15.3x15.3x26.5cm, 15-part, box 1set
natural

Exclusive
by Rayher



69 258 102 (6)
LED tealights incl. battery, 3.8cm ø
3.8cm, tab-blister 4pcs
white



69 160 000 (8)
Pumpkin slice - Set
tab-card 5pcs



69 169 159 (6)
Mini LED chain of lights w. timer 20 LED
220cm, Battery mode, for indoors
light yellow



Exclusive
by Rayher



70 055 000 (4)
CK Bats, FSC Mix Credit
2x27.6cm + 3x23.9cm



From something special for the loved ones

Self-made Advent calendar

Welcome to the magical world of self-made Advent calendars! The period leading up to Christmas is a specific period, filled with joyful anticipation, love and magical moments. Nothing reflects that lovely feeling better than a self-made Advent calendar. It is an expression of love, creativity and deep personal connections. Self-designed gifts show that special attention is paid to persons you hold dear.

Bringing a little joy every day: that's the real magic of Christmas! Moreover, there is no limit set to your customers' creativity. We have a huge selection of products to shorten the wait for Christmas: Whether small boxes, little bags or pouches made of papier-mâché, jute or wood – the variety of materials offers countless possibilities for individually designing not only the gift content, but also its wrapping.

And if time is of the essence, we have the perfect solution for your customers. With our Advent calendars to hang up, all your customers have to do is prepare 24 little presents: simply hang the calendar on the door or wall, fill the 24 pockets with presents and that's it! The pleasure of giving and receiving a gift will be just as great.

With our products, we are doing our utmost to make the Advent season unforgettable. It can be so easy to show your loved ones how much they mean to you!



CREATIVE

Basic materials for a DIY Advent calendar

With small sachets out of jute, papier mâché or wood and the desire to please a loved one, a unique decorative object is quickly created.

Your customers will find with us a broad range of basic materials to make their own Advent calendar, offering joy for 24 days.

INDIVIDUAL

Countless possibilities for making unique Advent calendars

Self-made presents have more than just material value – they are an expression of love, creativity and deep personal connections, because your customers know their loved

ones best. The Advent calendar can be designed to suit the personal style of the gift recipient. With our Christmas products, doing handicrafts is a pleasure in its own right.

MAGICAL

Fixed & Ready – Advent calendar to fill in

Even if time is short, giving something you've made yourself shows a high level of appreciation and embodies the magic of the Advent season.

Our ready-to-use Advent calendars just need to be hung up and filled with 24 little surprise gifts. This way, DIY is guaranteed to succeed.









46 794 000 (3)

CK Advent calendar incl. Numbers 1-24

H 21 cm, nordic houses, tab-bag 1set

Exclusive
by Rayher



- **Easy, quick** and very **trendy: individual Advent calendar** to make yourself
- The small bags offer enough room for special little surprises

Contents:

24 block-bottom bags, kraft paper (80 gsm, 10.5x6x21 cm)

Acrylic marker with round tip 1-2 mm (w), valve-action

Wooden Advent calendar numbers 1-24

Jute yarn 6m

Cardstock 21x9.8cm

Paper template Nordic Houses 10.2x4.2cm



46 803 000 (3)

CK Advent calendar incl. numbers

H13-16cm, gnome+cord, tab-bag 1set



- **Easy, quick** and sooo „gnomy“: **individual Advent calendar** to make yourself
- The differently sized bags offer enough room for little magical surprises

Contents:

8 safe-food paper bags, length 9.5 cm, height 16 cm (bottom 6 cm)

20 safe-food bags, length 9 cm, height 13 cm (without bottom)

Wooden Advent numbers Gnome 1-24 on wooden clothes pegs

Cord, 2 m



46 650 606 (2)
Advent calendar incl. numbers 1-24
assorted, H 13-16cm, cardboard box 1set
silver

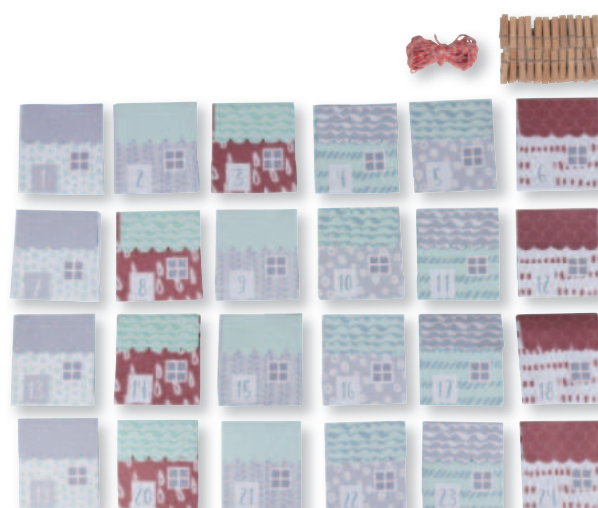
Exclusive
by Rayher



Advent calendar



46 733 000 (3)
CK Advent calendar incl. numbers 1-24
10x14cm each, tab-bag 1set



67 394 000 (3)
Paper folding houses 1-24, FSC Mix
Credit
9x10cm, tab-bag 1set

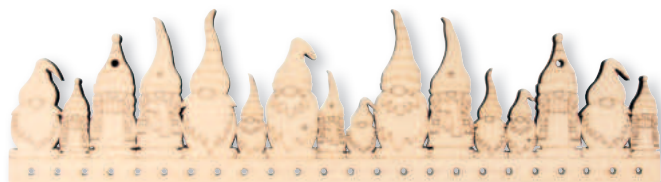
Exclusive
by Rayher



Contents:
24 sachets (10x 14cm)
24 wooden clothes pegs (3.5x0.7cm)
24 stickers "Adventskalenderzahlen"
10m jute cord

Textile specification:
Sachet: 100% polyester
Cord: 100% jute

Material specification:
Cord: 70% cotton, 30% polyester



1 2 3 4 5 6 7 8 9 10 11 12 13
14 15 16 17 18 19 20 21 22 23 24



46 796 505 (4)

Wood Advent calendar, FSC Mix Credit
44.2x12cm, gnome+numbers, bag 1set
natural

Exclusive
by Rayher



The mark of
responsible forestry



44 009 502 (1)

Macramé yarn, assorted, 1mm ø
3x about 50g, 3 spools of 65m each
eucalyptus
80% Cotton, 20% Polyester

Colours: olive + sand + eucalyptus



44 009 504 (1)

Macramé yarn, assorted, 1mm ø
3x about 50g, 3 spools of 65m each
sand
80% Cotton, 20% Polyester

Colours: white + grey + cream



44 009 220 (1)

Macramé yarn, assorted, 1mm ø
3x about 50g, 3 spools of 65m each
terracotta
80% Cotton, 20% Polyester

Colours: mustard yellow + natural + terracotta

- Soft, pleasant **macramé yarn**
- Easy to work with
- Ideal for **macramé** and all kinds of **knot techniques** etc.





44,4 cm



46 753 505 (4)

Wood Advent calendar, FSC Mix Credit

44.4x10cm, houses, bag 1pc

natural



The mark of responsible forestry



40 cm

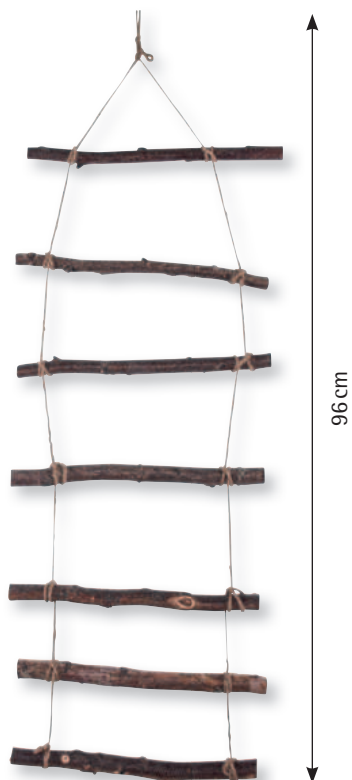


46 556 000 (3)

Wooden Advent calendar

40x3.5x12cm, +2 wall mounts, box 1pc

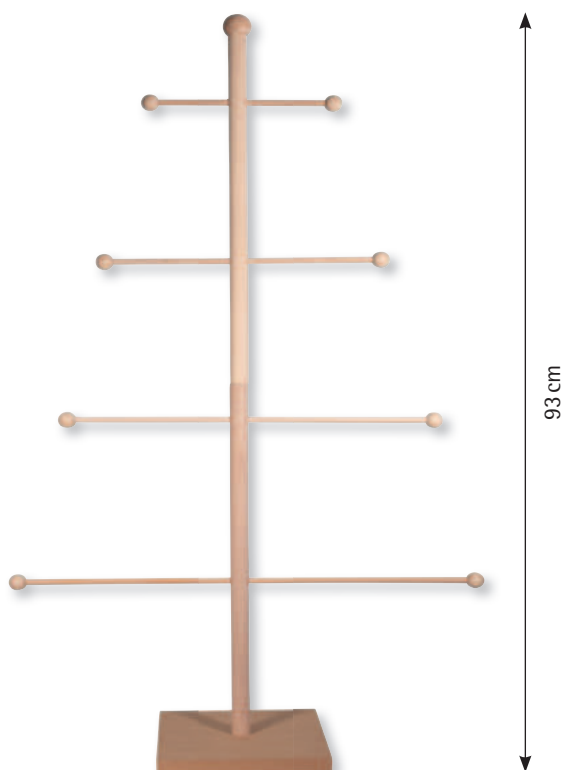




65 282 505 (4)
Deco-wooden ladder to hang up
96x30x2cm
natural



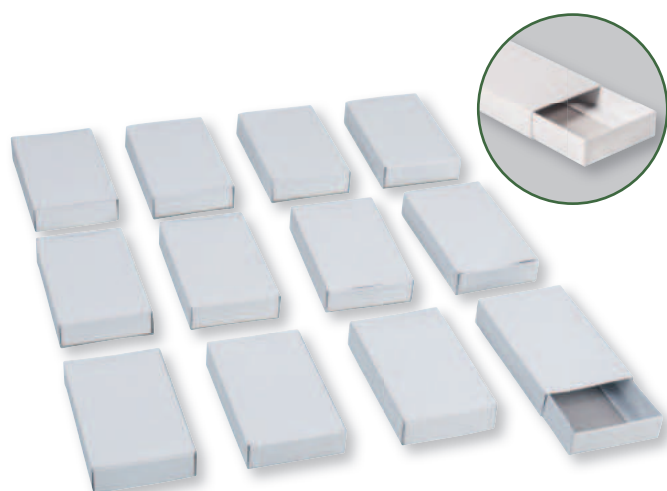
65 283 505 (4)
Deco-wooden ladder to hang up, X-mas tree
75x40x1.5cm
natural



62 582 000 (2)
Wooden Set trees
93x52x18cm, 12-piece, tab-bag 1Set

Exclusive
by Rayher

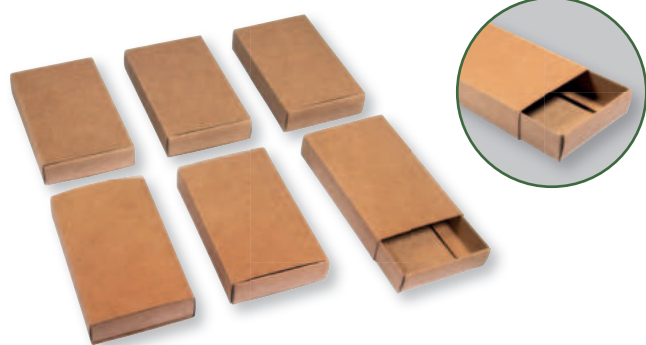




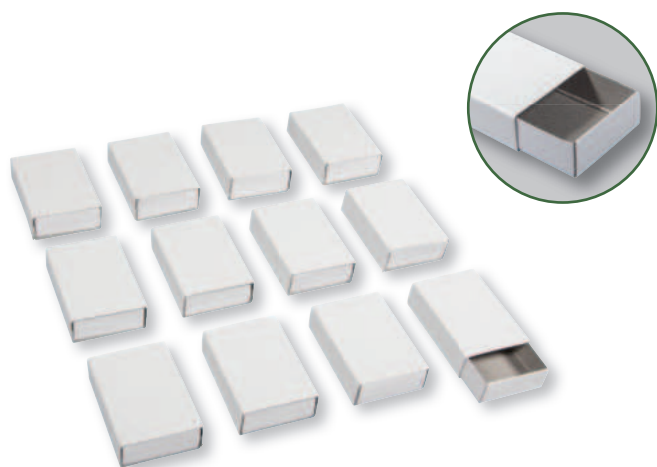
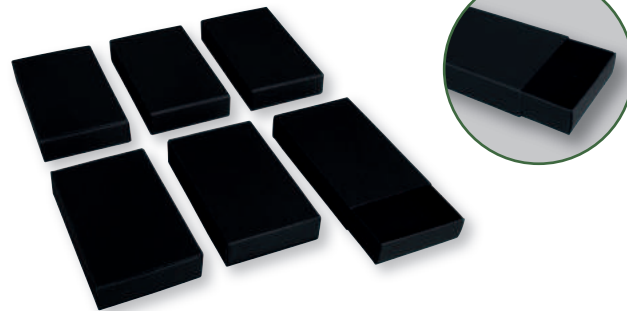
81 470 00 (10)
Matchboxes, big
11x6.5x2cm, bag 12pcs



67 368 576 (10)
Matchboxes, large
11x6.5x2cm, bag 6pcs
black



67 381 521 (10)
Matchbox XL, FSC Mix Credit
11x6.5x2cm, bag 6pcs
kraft



81 473 00 (10)
Match-box, small
bag 12 pcs., 5,3x3,6x1,5 cm





67 322 102 (6)
Foldable box
7.5x7.5x7.5cm, set 12pcs
white



67 327 576 (6)
Folding box
7.5x7.5x7.5cm, set 6pcs
black



67 380 521 (6)
Folding box, FSC Mix Credit
7.5x7.5x7.5cm, set 6pcs
kraft



67 323 102 (6)
Foldable box
10x10x10cm, set 6pcs
white



67 328 576 (6)
Folding box
10x10x10cm, set 3pcs
black



67 379 521 (6)
Folding box, FSC Mix Credit
10x10x10cm, set 3pcs
kraft



67 346 102 (6)
Folding box House
7.5x7.5x14cm, set 12pcs
white



67 347 576 (6)
Folding box House
7.5x7.5x14cm, set 6pcs
black

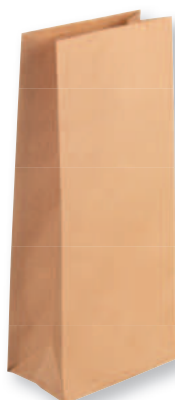
Through-dyed in black



- High-quality folding boxes (350 g/m²)
- The folding boxes „Square“ and the folding boxes „House“ can be combined with each other



67 276 102 (5)
Paper block-bottom bag
10x24x6cm, 80g/m², tab-bag
25pcs
white



67 276 521 (5)
Paper block-bottom bag
10x24x6cm, 80g/m², tab-bag
25pcs
kraft



67 276 576 (5)
Paper block-bottom bag
10x24x6cm, 80g/m², tab-bag
25pcs
black



Thanks to the stable quality, it is versatile in use.



67 245 102 (5)
Mini paper bag
5.3x11.5cm, tab-bag 50pcs
white



67 245 521 (5)
Mini paper bag
5.3x11.5cm, tab-bag 50pcs
kraft



67 267 616 (5)
Paper folding bag w.little stars
7x24cm, tab-bag 25pcs
gold

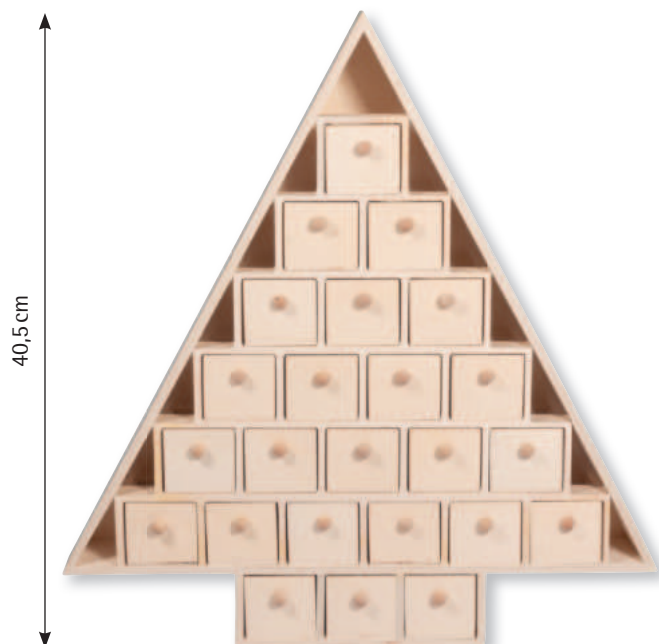


68 084 000 (6)
Paper bag brown, food-safe
9x13cm, 60g/m², tab-bag 20pcs
gold



67 321 521 (6)
Paper X-mas stockings
27.5x18cm, 100g/m², tab-bag 6pcs
kraft





64 647 505 (3)

Wood Advent calendar tree, FSC 100%

38.5x40.5x5.5cm

natural



- Wooden Advent calendar in tree shape
- 24 compartments (each measuring: 4.5x4x5.2cm)



62 910 505 (2)

Wood kit Advent calendar, FSC Mix Credit

25.5x17.5x45.5cm, house, 185-part, box

1set
natural

Exclusive
by Rayher

DIY
Set



- DIY Advent calendar House for filling in and designing
- 24 compartments in 3 different sizes
- Wood is not food-safe - use only packaged goods!



67 398 102 (3)
Paper-mâché Advent calendar, FSC Recycled
21x14.8x29cm, to unfold
white



Advent calendar

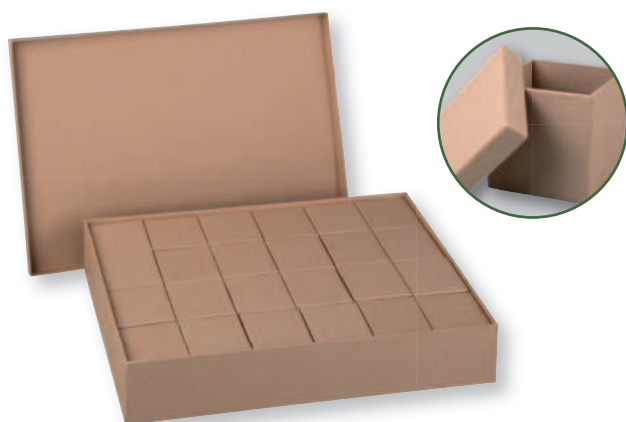
- **Advent calendar** made from **sturdy cardboard** for individual designing
- **24 compartments** in three different sizes (2 compartments - 13x6.8x5.3cm, 4 compartments - 6.3x6.8x10.8cm, 18 compartments - 6.3x6.8x5.3cm)
- **Foldable** (dimensions when folded: 21x14.8x29cm, when unfolded: max. 42x7.4x29cm)
- With a jute-like ribbon
- Can be used as a **storage box year-round**



67 399 521 (3)
Paper-mâché Advent calendar, FSC Recycled
24x12.4x30.2cm, House, to unfold
kraft



- **Advent calendar** made from **papier-mâché** for individual designing
- **24 compartments** in three different sizes (4 compartments - 11x5.4x5.4cm, 4 compartments - 5.4x5.4x11cm, 16 compartments - 5.4x5.4x5.4cm)
- **Foldable** (dimensions when folded: 24x12.4x30.2cm, when unfolded: max. 48x6.2x30.2cm.)
- Equipped with a snap fastener for safekeeping and secure transport
- Can be used as a **storage box year-round**



67 386 000 (2)

Papier-mâché box set, FSC Recycled 100%
24 parts 6x6x6cm + 26x38x7cm. 25-part



67 367 521 (3)

P.mâché Adventcalendar, FSC Recycled 100%
29.6x29.6x6.5cm, little boxes
kraft



67 341 521 (3)

Pap.mâc. Adventcalendar, FSC Recycled 100%
36x6.5x40cm, house
kraft





Contents:
4 pieces (3×2.2cm)
10 pieces (3×3.2cm)
5 pieces (3.5×2.2cm)
5 pieces (3.5×2.6cm)
Cord, 6m



46 812 505 (6)
Advent wood numbers 1-24,
FSC Mix Credit
2.2-2.6cm, assorted, +cord,
tab-bag 1set
natural

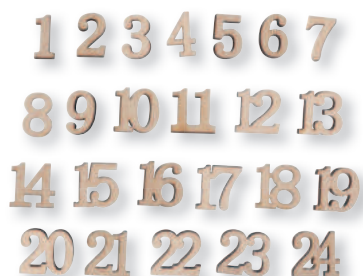
Exclusive
by Rayher



Advent calendar



46 748 000 (12)
Sticker Advent calendar, 4.5cm ø
various designs, tab-bag 24pcs



46 758 505 (8)
W. Advent calendar numbers 1-24, FSC 100%
1.7cm, w.adh. dot, tab-bag 24pcs
natural



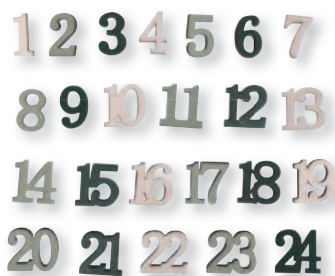
46 709 287 (8)
Wood Advent calendar numbers 1-24
2cm, w. adh. dot, tab-bag 24pcs
classic red



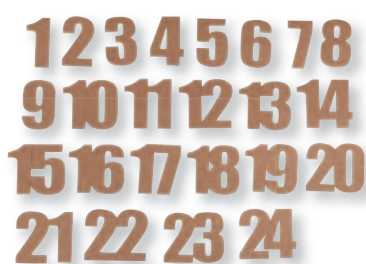
Material specification:
Yarn: 100% hemp

62 896 505 (8)
Wood pendant Stars, FSC Mix Credit
11pcs-6.8cm/23pcs-4.8cm, tab-bag
24pcs
natural

Exclusive
by Rayher



46 758 502 (8)
W. Advent calendar numbers 1-24, FSC 100%
1.7cm, w.adh. dot, tab-bag 24pcs
eucalyptus



67 393 521 (12)
Paper Advent numbers 1-24
3.9cm, tab-bag 1set
kraft



The mark of responsible forestry



46 790 000 (6)

Advent calendar numbers 1-24, FSC 100%
ø 2.5cm, with cord, tab-bag 24pcs



46 768 000 (6)

Advent calendar numbers 1-24, FSC 100%
ø 2.5cm, with string, tab-bag 24pcs



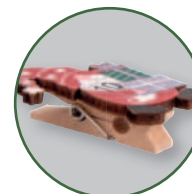
46 788 000 (4)

Advent numbers House 1-24, FSC 100%
3x3.5cm, clothes pegs+cord, tab-bag 1 set



46 791 000 (4)

Advent numbers Santa 1-24, FSC 100%
4-4.3cm, clothes pegs+cord, tab-bag 1Set



46 765 000 (4)

Advent numbers 1-24 House, FSC 100%
2.7x3.8cm, clips+cord, tab-bag 1set



Textile specification:
Cord: 100% jute



46 760 000 (4)

Advent numbers Fox 1-24, FSC 100%
2.5x4.8cm, clips+cord, tab-bag 1set



The mark of responsible forestry

Textile specification:
Cord: 100% jute



46 772 000 (4)

Advent nos 1-24, Xmas animals, FSC 100%
5-5.3cm, clips+cord, tab-bag 1set



The mark of responsible forestry

Textile specification:
Cord: 100% jute



46 657 999 (4)

Advent numbers Santa 1-24 on pegs
2.5x5cm, tab-bag 1set
coloured



46 718 000 (4)

Advent numbers 1-24 on clothes pegs
2.4x4.8cm, with cord, tab-bag 1 set



Textile material specification:
Cord: 100% jute



46 608 999 (4)

Adv.calendar numbers Star 1-24 on pegs
2.9x3.6cm, w. cord, tab-bag 1set
coloured



46 659 999 (4)

Advent numbers Stars 1-24 on pegs
4.5cm ø, tab-bag 1set
coloured



46 719 000 (4)

Advent numbers Star 1-24 on clothes
pegs
4x4.8cm, with cord, tab-bag 1 set



Material specification:
Cord: 100% polyester

Textile specification:
Cord: 100% jute

Textile material specifications:
Cord (white): 100% cotton
Cord (brown): 100% jute



46 746 000 (2)
Advent calendar "Mia" to hang up
41x112cm, bag 1pc

- Advent calendar "Mia" with 24 felt sachets (measuring 5.5x5.5cm each)
- Can be filled with sweets and small treats

Textile specification:

Textile + yarn: 100% polyester
Cord: 100% jute



46 747 000 (2)
Advent calendar "Santa" to hang up
51x118cm, bag 1pc

- Advent calendar "Santa" with 24 sachets (each measuring: 8x7.5cm)
- Made from various color-sorted fabrics
- Incl. wooden heart-shaped clothes peg to display the current day

Textile specification:

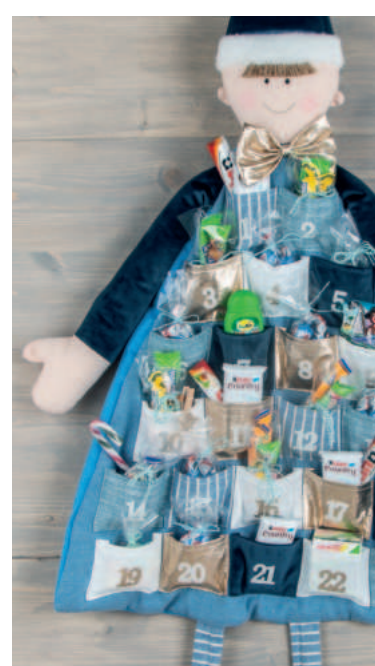
Textiles (corduroy fabric, plush, wadding, yarn): 100% polyester
Coat: 60% cotton, 40% polyester
Cord: 100% jute



46 455 258 (2)
Advent calendar to hang up
118x53cm, bag 1pc
pale-pink
82% Polyester, 8% Cotton, 6% Polyurethane, 4% linen



46 455 376 (2)
Advent calendar to hang up
118x53cm, bag 1pc
royal blue
82% Polyester, 8% Cotton, 6% Polyurethane, 4% linen





46 555 000 (2)

Advent calendar tree to hang up

95x64cm, bag 1pc

97% Polyester, 2% Polyurethane, 1% Polyamide



46 557 000 (2)

Advent calendar Christmas stockings

220cm, stockings 6x15cm, bag 1pc

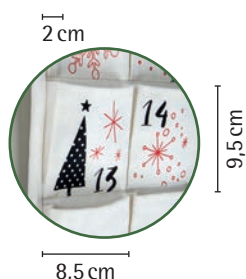
97% Polyester, 2% Polyurethane, 1% Polyamide



46 705 000 (2)

Advent calendar to hang

36x82cm, printed, bag 1pc



46 656 999 (2)

Advent calendar to hang up

44x95cm, bag 1set

coloured



- High-quality Advent calendar with 24 canvas sachets
- Dimensions per sachet: 8.5 x 9.5cm (about 2cm wide at the top, pointy at the bottom)
- Printed with various motifs
- Rear side covered with felt

Textile material specification:

Canvas (front side): 100% cotton
Felt (rear side): 100% polyester

- Advent calendar sachets out of 2 diff. materials and of 4 diff. colours
- Dimensions per sachet: 8 x 9.5cm

Textile specifications:

Cotton sachet: 100% cotton
Corduroy sachet: 90% polyester + 10% nylon
Small cord: 100% cotton

From simple elegance

Inspiration for the Advent wreath

Advent period is a special time to enjoy the company of family. It's a great opportunity to get creative, bake biscuits or just enjoy each other's company. And the perfect time to make an Advent wreath together. This custom not only brings a festive atmosphere to the home, but also strengthens family ties.

Whether it's about a classic fir sprig wreath with red candles, a modern, minimalist wreath with a self-cast tray or a creative wreath out of wood – we have for your customers materials and accessories to suit any taste.

Our materials and building kits encourage the creativity and the design of a completely customised wreath. Our natural wreaths are also a perfect base for working with natural materials and for adding a personal touch to your Advent wreath.

As soon as the first candle is lit, the excitement for Christmas is palpable, and the smile that lights up faces shows just how special this moment is. We can experience the magic of Advent together – by doing handicrafts and taking part in all the wonderful traditions that bring people together!



CREATIVE

Must-have for the Advent wreath

An Advent wreath is nothing without candles. They show us the weeks between now and Christmas, and progressively bring us closer to Christmas Eve. With our wax pellets for candle making, your customers can give free reign to their

imagination. The transfer foils are perfectly suitable to affix individual messages to candles. And if time is running out, we've got a great selection of ready-to-use candles that can be put in the spotlight straight away.

INDIVIDUAL

Infinite design possibilities

Different interior styles offer a variety of expression possibilities – just like Advent wreaths. Thanks to our wide choice of shapes, colours and materials, we offer your customers

not only a great source of inspiration, but also almost unlimited possibilities for individual design. All according to their furnishings, their requests and their taste.

TRADITIONAL

... completely re-interpreted

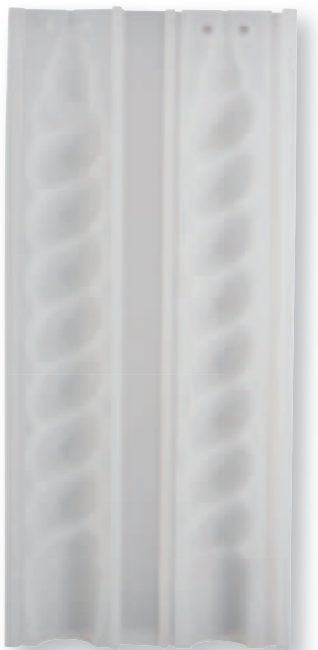
From fir twigs, pine cones and berries to cinnamon sticks, orange slices, moss, mistletoe and eucalyptus: the possibilities for combining natural materials as well as creating individual designs are infinite. And time spent with family

and friends leads to unforgettable moments. And these moments strengthen family ties and friendships, and inspire to establish new traditions.









36 199 000 (6)

Casting mould Taper candle, twisted
ø2cm / height 19.5cm, tab-bag 1pc



- Candle casting mould for twisted taper candles
- Casting mould made of high-quality silicone
- Particularly elastic and resilient material
- Reusable
- Frost- and heat-resistant (from -40°C up to 200°C)
- Very easy to demould and dimensionally stable
- Ideal for casting with beeswax, paraffin wax and rapeseed wax



36 200 000 (6)

Casting mould Taper candle, striped
ø2.3cm / height 19.5cm, tab-bag 1pc



- Candle casting mould for striped taper candles
- Casting mould made of high-quality silicone
- Particularly elastic and resilient material
- Reusable
- Frost- and heat-resistant (from -40°C up to 200°C)
- Very easy to demould and dimensionally stable
- Ideal for casting with beeswax, paraffin wax and rapeseed wax



36 201 000 (6)

Casting mould Ribbed candle, twisted
ø4,6x15cm,+metallic wick holder,box 1set

- Candle casting mould for hourglass ribbed pillar candles
- Casting mould made of high-quality silicone
- Particularly elastic and resilient material
- Reusable
- Frost- and heat-resistant (from -40°C up to 200°C)
- Very easy to demould and dimensionally stable
- Ideal for casting with **beeswax**, **paraffin wax** and **rapeseed wax**

Tip for use:

- The mould can be filled to different height levels when casting



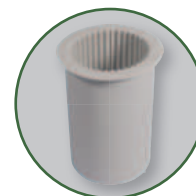
Advent wreath





36 148 000 (6)

Silicone mould U-shaped ribbed candle
8.4x3.9cm, height 8.6cm, box 1pc

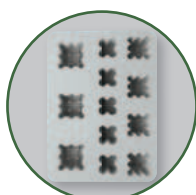


36 146 000 (6)

Silicone mould Ribbed pillar candle
ø 5cm, height 8.7cm, box 1pc

- **Casting mould** made of high-quality **silicone**
- Particularly elastic and robust material
- **Reusable**
- Frost- and heat-resistant (from -40°C up to 240°C)
- Very easy to demould and dimensionally stable
- Ideal for casting with **wax**
- Candle casting mould in a trendy **U-shape with grooves**
- **Suitable for all kinds of wax**
- Incl. metal wick holder (reusable)

- **Casting mould** made of high-quality **silicone**
- Particularly elastic and robust material
- **Reusable**
- Frost- and heat-resistant (from -40°C up to 240°C)
- Very easy to demould and dimensionally stable
- Ideal for casting with **wax**
- Candle casting mould for **pillar candles with grooves**
- It can be poured to different height levels and is suitable for **all kinds of wax**
- Incl. metal wick holder (reusable)



für · pour · for
12



36 163 000 (5)

Silicone mould Bubble candles
24.4x18x5cm, 12 moulds, tab-box 1pc

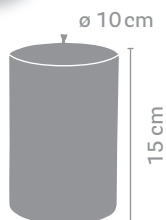
Exclusive
by Rayher

- **Casting mould** made of high-quality **silicone**
- Particularly elastic and robust material
- **Reusable**
- Frost- and heat-resistant (from -40°C up to 240°C)
- Very easy to demould and dimensionally stable
- Ideal for casting with **wax**

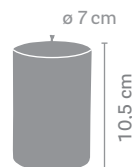
Usage tips:

- Silicone casting mould for casting simultaneously **three differently sized bubble candles**
- The **variable candle height** can be defined during the casting process





31 660 000 (4)
Candle-shaped mould, cylindric, flat, \varnothing 10cm
15cm high



31 659 000 (4)
Candle-shaped mould, cylindric, flat, 7cm \varnothing
10.5cm high

- **Candle casting mould** made of **sturdy polycarbonate**
- Almost unbreakable material
- **Reusable**
- Heat-resistant (up to approx. 120°C)
- Easy to demould

Usage tips:

- Matching flat wicks: items no. 31 589 000 (FD19) + 31 591 000 (FD21)
- Put the casting moulds filled with wax in the fridge before demoulding
- Demould them in the fridge after about 30 minutes

Contents:

Candle casting mould
Instructions



Advent wreath



31 642 000 (5)
Candle mould taper candle, 2.5cm \varnothing
27cm



- **Candle casting mould** made of **sturdy polycarbonate**
- Almost unbreakable material
- **Reusable**
- Heat-resistant (up to about 120°C)
- Easy to demould

Application tips:

- Corresponding flat wick: item no. 31 589 000
- Put the casting mould filled with wax in the fridge before demoulding it
- Demould it after about 30 minutes being in the fridge

Contents:

Candle casting mould
Instructions

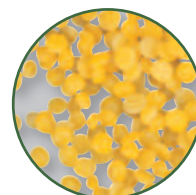




31 643 000 (4)
Rapeseed wax
bag 250g


31 644 000 (2)
Rapeseed wax
bag 1000g

Advent wreath

- **Rapeseed wax pellets** made from hydrogenated rapeseed oil
- Renewable primary material
- **Practical lenticular shape:** easy to measure out and melts perfectly
- Suitable for **making candles**




31 634 102 (4)
Beeswax pellets, cosmetics quality
100% beeswax, white, bag 200g
white



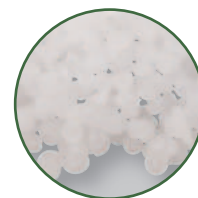
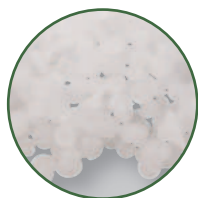

31 045 00 (4)
Beeswax pellets
100% Beeswax, tab-bag 200 g



- **Pharmaceutical grade beeswax**
- Perfect for **DIY beeswax wraps:** food-safe
- Suitable as a component for the production of cosmetics

- **Beeswax pellets**
- 100% pure beeswax
- Suitable for **candle making**
- Suitable for wood and leather care





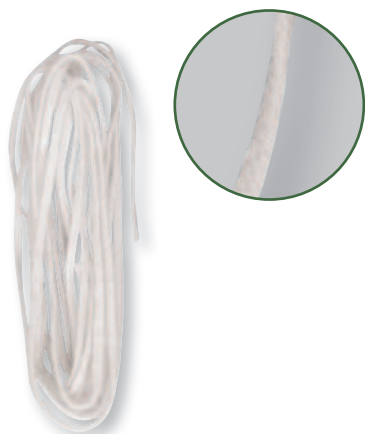
31 042 02 (5)
Wax pellets
box 800g
white



31 072 02 (4)
Wax pellets
box 1500g
white


- 100% paraffin-based wax pellets
- Practical lens shape for **easy dosing and perfect melting**
- Suitable for optimal **candle making**
- Slightly transparent wax which can be coloured with colour pigments (item no.31 640 and 31 032) and dye tablets (item no.31 028)





 **31 589 000 (10)**
Flat wick, FD19
tab-bag 2m



 **46 759 000 (8)**
Glass vase, ø 8cm
10cm, cylindrical shape



 **31 653 000 (8)**
Wooden wick with metal wick holder
1.5x15cm, tab-bag 1set



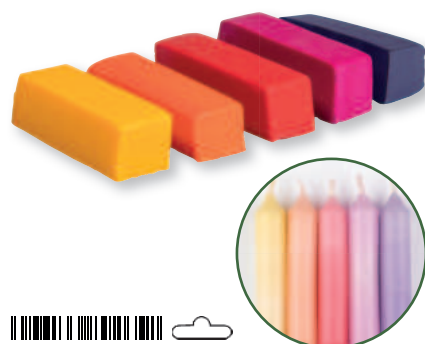
- **Wooden wicks** made from birch veneer for DIY candles
- With a **soft crackling sound**
- For glass and metal vessels
- For casting with paraffin wax pellets

Usage tips:

- Insert a single wooden wick or two of them into the metal base and put it/them inside the chosen vessel
- Depending on the size of the vessel, shorten the wooden wick accordingly, then pour in the liquid wax
- Before lighting the candle, shorten the wooden wick to about 1 cm above the wax

Contents:

20 wood wicks (1.5x15cm each)
20 metal wick bases (1.6x1.2x1cm each)



 **31 640 990 (5)**
Colour pigments for wax
1x1x2.9cm, assorted, tab-bag 5pcs
rainbow



 **31 640 999 (5)**
Colour pigments for wax
1x1x2.9cm, assorted, tab-bag 5pcs
coloured



 **31 640 685 (5)**
Colour pigments for wax
1x1x2.9cm, assorted, tab-bag 5pcs
pastel

- **High-quality colour pigments** for dyeing and dipping candles in
- Depending on the amount added, the colour varies in intensity (1 stick is sufficient for about 500g)
- Pigments are **miscible with each other and lightfast**




31 406 00 (6)
Candle
150x80 mm

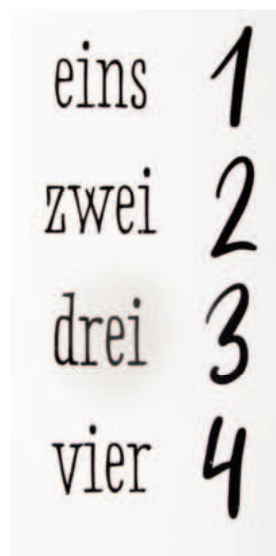



31 402 00 (12)
Pillar candle
150x60 mm




31 191 00 (6)
Stumpy candle, 5cm ø
20cm





31 662 287 (10)
Transfer foil Advent numbers, 1-4
2.8-3.3cm numbers, tab-bag 1sheet
classic red

Exclusive
by Rayher



31 633 000 (10)
Transfer foil Advent numbers, 1-4
1.5-3cm numbers, tab-bag 1sheet

- Transfer-foil for **Advent numbers**
- For designing candles and for smooth, non-absorbent surfaces

Application tip:

- Dip the desired number in a lukewarm water for approx. 30 - 60 seconds (until the release paper detaches from the foil)
- Then slide the motif onto the candle and adjust it to the desired position



31 663 000 (10)
Transfer foil "Nordic Winter"
various designs, tab-bag 2sheets

Exclusive
by Rayher

- Transfer foil with various **motifs and texts**
- Suitable for **candles** as well as **smooth, non-absorbent surfaces** (e.g. glass, acryl)



31 648 000 (10)
Transfer foil "Winter + Christmas"
various designs, tab-bag 2sheets



31 649 000 (10)
Transfer foil "Home + Schutzengel"
various designs, tab-bag 2sheets



Exclusive
by Rayher

Exclusive
by Rayher

- Transfer foil with various motifs and texts
- Suitable for **candles** as well as **smooth, non-absorbent surfaces** (e.g. glass, acryl)



31 572 000 (5)
Transfer foil A4
210x297mm, tab-bag 1sheet

1x

A4



31 596 000 (3)
Transfer foil A4
210x297mm, tab-bag 4sheets

4x

A4

- Transfer foil for the transfer of **desired motifs**
- Suitable for **candles, wax and smooth, non-absorbent surfaces** (glass) as well

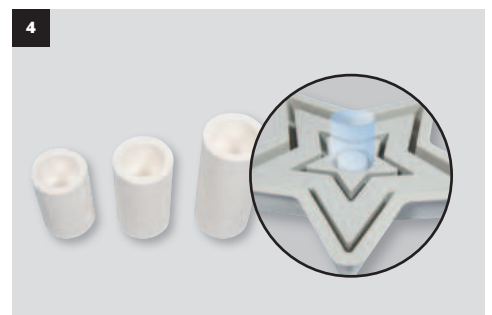
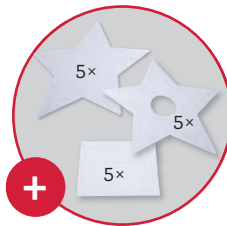
Tips for use:

- Use a laser printer (max. fuser kit temperature of 170°C) to print the motif laterally on the glossy side of the transfer foil
- Put it into a lukewarm water for about 30-60 seconds until the release paper begins to detach from the foil
- Then move it to the respective carrier

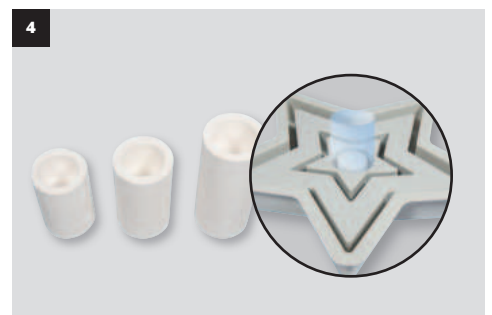
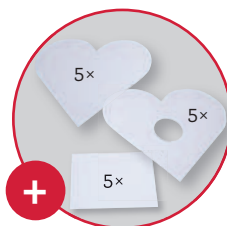


31 500 502 (6)
Wax-liner
bottle 30ml
eucalyptus





36 168 000 (6)
Silicone mould Candleholder Star
18.5x18.5x2.5cm, incl. 3x5 stencils

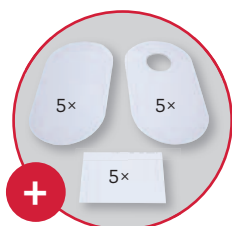


36 166 000 (6)
Silicone mould Candleholder Heart
15.9x15x2.5cm, incl. 3x5 stencils

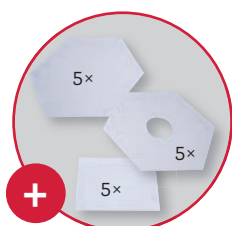
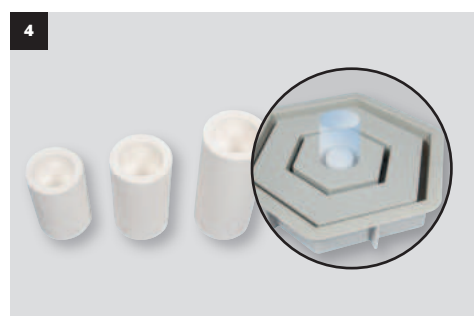
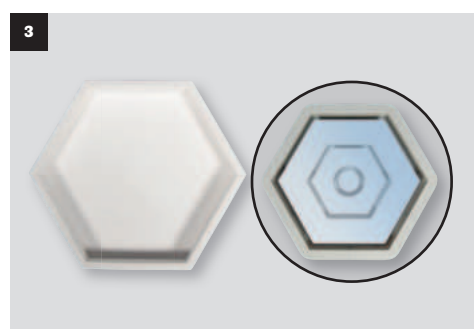
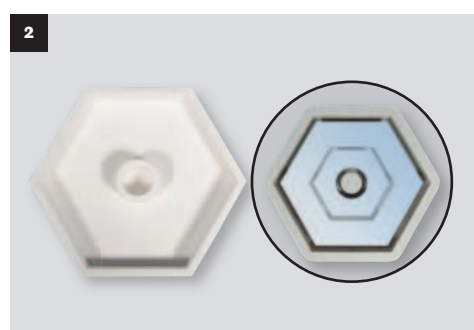
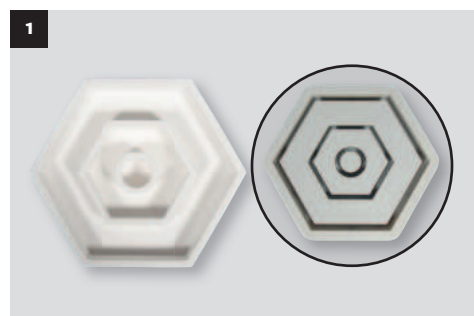
- Casting mould made of high-quality **silicone incl. 3 foil stencils** (5 pcs of each)
- Particularly elastic material
- **Reusable**
- Frost- and heat-resistant (from -40°C up to 240°C)
- Very easy to demould and dimensionally stable
- Ideal for casting with **Raysin**, **creative-cement** and **casting resin**

Usage tips:

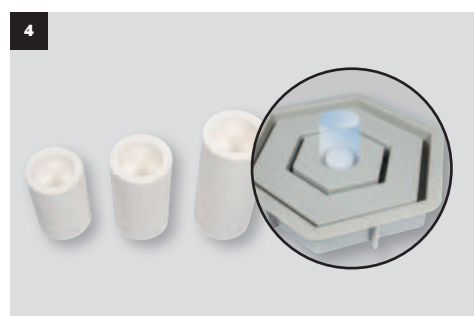
- Casting mould for candle holders with **plenty of creative application possibilities**
- Individual casting mould parts can be coated with the enclosed foil stencils
- **Various casting results** depending on the combination: from single candle holders and plain decorative plates up to combinations of both



36 165 000 (6)
Silicone mould Candleholder, oval
18.5x10.3x2.5cm, incl. 3x5 stencils



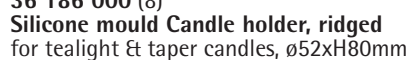
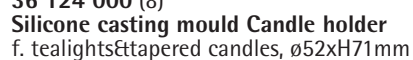
36 167 000 (6)
Silicone mould Candleholder Hexagon
16x14x2.5cm, incl. 3x5 stencils



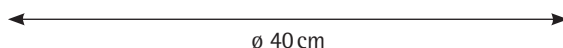
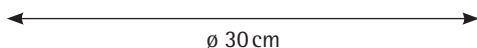
- Casting mould made of high-quality silicone incl. 3 foil stencils (5 pcs of each)
- Particularly elastic material
- Reusable
- Frost- and heat-resistant (from -40°C up to 240°C)
- Very easy to demould and dimensionally stable
- Ideal for casting with Raysin, creative-cement and casting resin

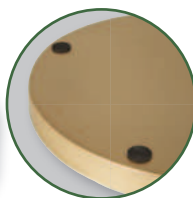
Usage tips:

- Casting mould for candle holders with plenty of creative application possibilities
- Individual casting mould parts can be coated with the enclosed foil stencils
- Various casting results depending on the combination: from single candle holders and plain decorative plates up to combinations of both



- **Casting mould** made of high-quality **silicone**
- Particularly elastic and stable material
- **Reusable**
- Frost- and heat-resistant (from -40°C up to 240°C)
- Very easy to demould and dimensionally stable
- Perfectly suitable for casting with **creative-cement**, **Raysin** and **casting resin**



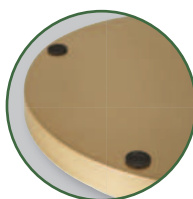


- Decorative metal tray with matt golden outer side and green-lacquered inner side
- 4 black non-slip foam rubber pads stuck to the bottom for secure hold in place
- Dimensions: ø 30cm, rim height 2cm



46 800 502 (4)

Decorative metal tray, 30cm ø
bi-colour, with rubber foam pads
eucalyptus



- 2 decorative metal trays in a set with matt golden outer side and green-lacquered inner side
- 4 black non-slip foam rubber pads, per tray, stuck to the bottom for secure hold in place

Contents:

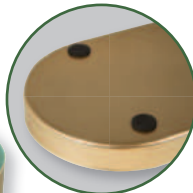
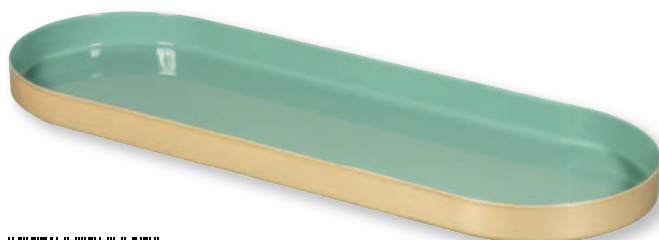
Tray ø 20cm, rim height 1.5cm

Tray ø 25cm, rim height 2cm



46 801 502 (4)

Decorative metal tray, 20+25cm ø
bi-colour, w.rubber foam pads, set 2pcs
eucalyptus



- Decorative metal tray with matt golden outer side and green-lacquered inner side
- 4 black non-slip foam rubber pads stuck to the bottom for secure hold in place
- Dimensions: 28x10x1.5cm



46 802 502 (4)

Decorative metal tray, oblong
28x10x1.5cm, bi-colour, w.rubber foam pads
eucalyptus





46 695 000 (8)

Glass vase, 5.5cm ø

16cm, opening ø 1.8cm, 225ml



46 696 000 (6)

Glass vase, 7cm ø

20cm, opening ø 1.8cm, 475ml

- Glass vase for dried-flower arrangements and taper candles
- Suitable decorative elements: taper candles (item no.31 641 102) in combination with bottle candle holders for taper candles (items no.46 694 606 + 46 694 616), cork stoppers (item no.62 585 000), dried flowers and tags



46 694 606 (8)

Met.bottle candle holder f.taper candle

2.2/1, 8x5cm, tab-bag 2pcs

silver



46 694 616 (8)

Met.bottle candle holder f.taper candle

2.2/1, 8x5cm, tab-bag 2pcs

gold



46 757 000 (6)

Glass vase, 15cm ø

20cm, cylindrical shape



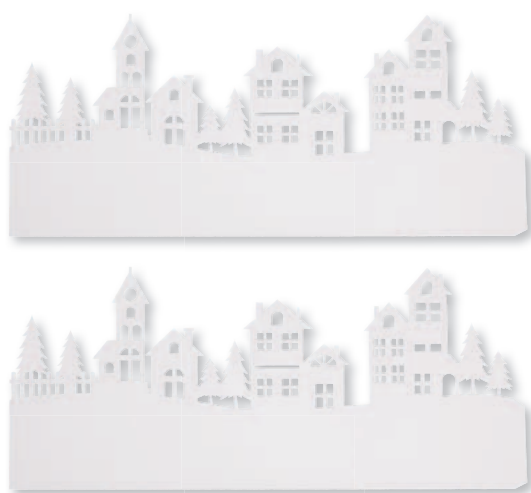
65 396 000 (1)
Eucalyptus wreath, 35cm ø
12 cm

- A **high-quality eucalyptus wreath** made from natural, dried **eucalyptus twigs**
- Round-shaped leaves, greyish/green/slightly bluish leaves
- Typical **eucalyptus scent** (all-natural)



85 493 000 (4)
Eucalyptus bunch with paper sleeve
30-35cm, assorted

- **Eucalyptus bundle** made from **natural, dried eucalyptus twigs**
- **Different twigs** with round and elongated leaves
- Typical **eucalyptus scent** (purely natural)



87 435 102 (10)
Paper silhouette Mountain village
30.7x13.3cm, tab-bag 2pcs
white



69 137 000 (6)
Micro LED string lights with wire
220cm, 20 lights, tab-box 1pc.

- **Light colour: warm-white**
- Total length: 220cm (supply cable 30cm)
- 20 LED lights (distance 10cm)
- With cable return and extremely flexible cable
- For indoor use
- Battery compartment (2x lithium button cell, 3V/210mAh - not included)



- high-quality floral foam wet brick
- with plastic underlay

20 cm ø

30 205 000 (4)
Wet-brick ring, 20cm ø
Thickness 4.2cm

25 cm ø

30 206 000 (4)
Wet-brick ring, 25cm ø
Thickness 4.2cm



20 cm ø

89 070 31 (25)
Wreath of straw, natural,
not sealed
20 cm ø

20 cm ø

89 075 31 (1)
Straw wreath,
natural, separately sealed
20 cm ø

25 cm ø

89 071 31 (20)
Wreath of straw, natural,
not sealed
25 cm ø

25 cm ø

89 076 31 (1)
Straw wreath,
natural, separately sealed
25 cm ø

30 cm ø

89 072 31 (20)
Wreath of straw, natural,
not sealed
30 cm ø

30 cm ø

89 077 31 (1)
Straw wreath,
natural, separately sealed
30 cm ø

35 cm ø

89 073 31 (10)
Wreath of straw, natural,
not sealed
35 cm ø

35 cm ø

89 078 31 (1)
Straw wreath,
natural, separately sealed
35 cm ø

40 cm ø

89 066 31 (6)
Straw wreath, natural, not
sealed
40 cm ø

40 cm ø

89 068 31 (1)
Straw wreath, natural, sepa-
rately sealed
40 cm ø





30 cm ø



65 235 000 (4)

Vine wreath, natural, 30cm ø
5cm

40 cm ø



65 242 000 (2)

Vine wreath, natural, 40cm ø
7cm



30 cm ø



65 271 505 (6)

Whitewashed grapevine
wreath, 30cm ø
7x2cm, flat
natural

40 cm ø



65 272 505 (4)

Whitewashed grapevine
wreath, 40cm ø
10x3cm, flat
natural



30 cm ø



65 013 000 (4)

Willow wreath, white smeared, 30cm ø
height 8cm

40 cm ø



65 019 000 (2)

Willow wreath, whitewashed, 40cm ø
height 8cm



30 cm ø



65 077 000 (4)

Wreath, nature, 30cm ø
8cm


40 cm ø



65 098 000 (2)


Wreath, nature, 40cm ø
10cm





24 053 00 (10)
Florist's wire, loose
wooden reel 100 g, 0,65 mm ø
glowed


3×




 
24 034 00 (10)
Florist's wire, 0,65mm ø
wooden reel, annealed, tab-bag
100g
annealed


24 127 576 (15)
Florist wire, annealed,
0,65mm ø
Wood spool, 3 pcs of 100g,
bag 300g
black





24 054 13 (10)
Florist's wire, loose
wooden reel 100 g
dark green, 0,65 mm ø




24 053 21 (10)
Florist's wire, loose
wooden reel 100 g, 0,65 mm ø
platinum




24 121 00 (20)
Brass wire
0,30 mm ø, spool 80 m



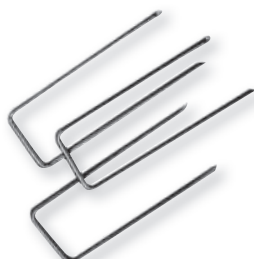

24 132 00 (10)
Brass wire
0,40 mm ø, spool 40 m



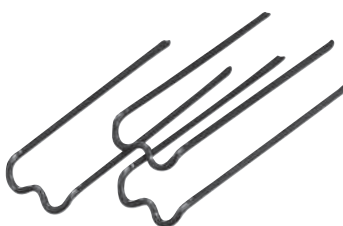

24 026 00 (10)
Silver wire with copper core
0,30 mm ø, spool 50 m





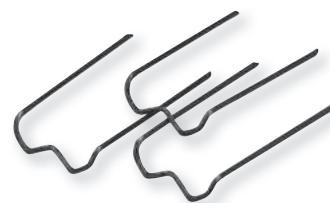
 
21 065 00 (10)
Strawflower pins
25x5mm, tab-bag 100 pcs.





 
21 066 00 (10)
Roman clamps
30x10mm, tab-bag 50 pcs.



 
24 080 00 (10)
Patent-holder, 10/35 mm
tab-bag 50 pcs.



 
24 081 00 (10)
Patent-holder, 17/35 mm
tab-bag 50 pcs.



64 648 505 (3)
Wood dowel rod set, FSC 100%
Ø 1-4cm, H 5.5-6.5cm, 99 pcs, box 1set
natural



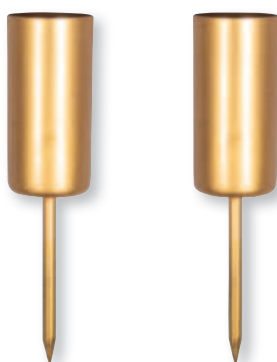
The mark of
responsible forestry



Advent wreath



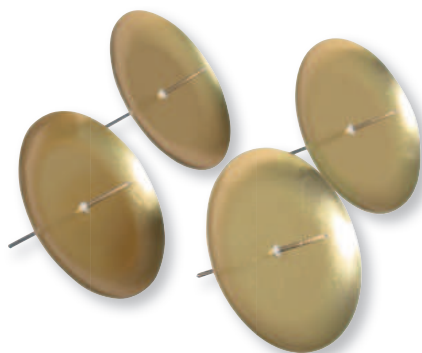
31 641 102 (8)
Taper candle, 2.1cm Ø
19cm, box 4pcs
white



25 231 616 (6)
Taper candle holder to insert, Ø 2.3cm
Holder 5cm, socket length 5cm, tab-bag 2pc
gold



25 231 576 (6)
Taper candle holder to insert, Ø 2.3cm
Holder 5cm, socket length 5cm, tab-bag 2pc
black



25 152 06 (5)
Candlestick for advent, 8cm ø
tab-bag 4 pcs.
gold



25 152 22 (5)
Candlestick for advent, 8cm ø
tab-bag 4 pcs.
silver



55 798 000 (12)
Eucalyptus branch
34cm



55 924 000 (12)
Mistletoe twig
12x16cm



85 494 000 (8)
Moss, purified
tab-bag 30g



85 083 00 (5)
Moss, dried
tab-bag 100 g



85 492 000 (8)
Lichen Moss
tab-bag 20g




89 096 06 (10)
Brilliant flower hair
tab-bag 17g
gold




89 096 22 (10)
Brilliant flower hair
tab-bag 17g
silver




 55 701 000 (12)
Deco Branch with white berries
18cm




 55 869 000 (12)
Fir twig with cones
24cm



 55 957 000 (12)
Pine cone twigs with berries
17cm



 55 916 000 (12)
Berry twig with alder cone
35cm



 55 956 000 (12)
Berry twig
19cm. red



  55 724 000 (10)
Fir branches
7,7cm+9,5cm, tab-bag 6pc

6×



  55 872 000 (6)
Mini fir garland
2cm, tab-bag 3m

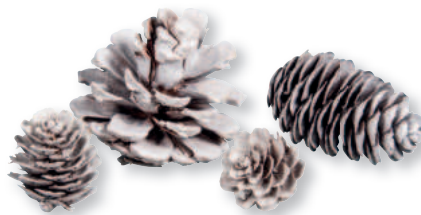


Advent wreath



 
46 722 000 (10)
Fir cones, mini
1.5-2cm, tab-bag 18 pieces

18×



 
55 867 102 (8)
Pine trees, fir trees, larch cones
assorted, 2.5-6cm, set 25pcs
white

25×



 
55 867 505 (8)
Pine trees, fir trees, larch cones
assorted, 2.5-6cm, set 25pcs
natural

25×



 
85 044 00 (5)
Cinnamon sticks, prepared
tab-bag 30 g, ca 8 cm



 
85 238 00 (5)
Aniseed star
tab-bag 30 g



 
85 041 00 (5)
Orange slices
dried, tab-bag 25 g



 
55 963 000 (12)
Deco mix with Star
assorted, 4-12cm, bag 12pcs



 
55 959 000 (12)
Fir cones on cord to hang up
3 fir cones, 26cm, bag

Textile material specification:
Cord: 100% jute





55 918 000 (8)
Natural mix apples & berries
assorted, 2-12cm, tab-bag 11pcs



55 917 000 (8)
Natural mix with cones
assorted, 2-6cm, tab-bag 20pcs



Exclusive
by Rayher



The mark of
responsible forestry



46 583 000 (10)
Wooden stars, natural, FSC Mix Credit
assorted, 3.5-5.5cm, tab-bag 8pcs



48 987 000 (1)
Dump bin display Advent wreath Basic



46 763 000 (8)
Wooden shapes to scatter Star, FSC
100%
ø1.2-4cm, partial adh.dot, tab-bag 17pcs



The mark of
responsible forestry



46 701 000 (8)
Wooden tag Santa
3.5x6cm, with jute cord, tab-bag 2pcs



46 553 638 (8)
Metal flames to insert
5x13cm, 2 designs, tab-bag 2pcs
copper



We reserve the right to make changes to the
equipment and the packaging design.

From the first Christmas atmosphere

Deco for this precious period

The weeks of Advent and Christmas are a precious time of year, when the house becomes a cosy cocoon. It is the time when we create a heart-warming atmosphere with a soft lighting and festive colours. A well-decorated Christmas tree is one of the most magical features of the festive season. Each tree ornament tells a story, whether it's the star handmade by the children or the sparkling baubles that reminiscent of Christmases gone by. Decorating the Christmas tree as a family not only brings joy, it also strengthens family ties.

But there are also many other moments during this festive period when doing handicrafts and creativity bring a joyful atmosphere – designing door or window wreaths, making cards, wrapping gifts or creating Christmas pendants. Christmas decorations are not only an expression of togetherness, as most are made together, but also of individuality and tradition.

The main element of any Christmas deco is, of course, the Christmas crib. Many families have a tradition of designing their own Christmas crib: With our Christmas crib casting moulds or plain wooden Christmas cribs, your customers can give this tradition a modern twist. A home-made Christmas crib not only brings joy, but also reconnects us to our roots and creates a space for inner peace and deep reflection.

Whatever your customers' choice, our products will turn the Advent and Christmas period into a memory of precious moments.



CREATIVE

New ideas for the Christmas tree

Each Christmas tree ornament and Christmas card is a unique piece that fully reflects each one's personality and creativity. Whether using paint, casting moulds or

decorative materials, your customers can create individual Christmas objects to suit their personal style.

INDIVIDUAL

Create something special

Thanks to our products, your customers can plan unforgettable craft projects over the Christmas period, not only by

decorating and crafting, but also by creating memories that will last a lifetime.

FESTIVE

... design and decoration

DIY Christmas tree ornaments bring a special magic to this contemplative time of year. From the joint research for ideas up to the choice of decorations or gifts, through crafting

and creative designing, pleasant emotions arise that make the magic of Christmas.









36 169 000 (5)
Silicone mould Tealight tree & stars
14.5x26x4cm, 3 shapes, box 1pc



- **Casting mould** made of high-quality **silicone**
- Particularly elastic and resilient material
- Reusable
- Frost- and heat-resistant (from -40°C up to 230°C)
- Very easy to demould and dimensionally stable
- Ideal for casting with **creative-cement**, **creative-cement 5-in-1**, **Raysin**, casting resin

Tipp for use:

- The fir tree can be used as a tealight candle holder





 
36 191 000 (5)
 Silicone mould Fir trees
 14.5x26x2cm, 4 shapes, box 1pc



- **Casting mould** made of high-quality **silicone**
- Particularly elastic and stable material
- **Reusable**
- Frost- and heat-resistant (from -40°C up to 240°C)
- Very easy to demould and dimensionally stable
- Perfectly suitable for casting with **creative-cement**, **Raysin** and **casting resin**





64 514 505 (2)
Wooden star set, FSC Mix Credit
42.5cm ø, 6-part, box 1 set
natural

Exclusive
by Rayher



The mark of
responsible forestry



46 707 505 (8)
Wood decor Star, FSC Mix Credit
12+15+20cm ø, + cord, tab-bag 3pcs
natural

Exclusive
by Rayher



The mark of
responsible forestry



46 708 505 (8)
Wood decor Star, FSC Mix Credit, 21.7cm
ø
tab-bag 1pc
natural

Exclusive
by Rayher



The mark of
responsible forestry



25 224 102 (5)
Metal rings Stars, assorted
1x20cm, 1x30cm, 1x40cm, box 3pcs
white



25 224 616 (5)
Metal rings Stars, assorted
1x20cm, 1x30cm, 1x40cm, box 3pcs
gold

- **Shaped metal rings:** one-of-a-kind rings made of 3mm thick metal
- Perfect for **special decorations:** adorned with floral elements, for festive decorations or for fanciful dreamcatchers
- Each set contains **3 different sizes per shape**
- The **shapes and sizes complement** each other and can therefore be **combined together** in any way

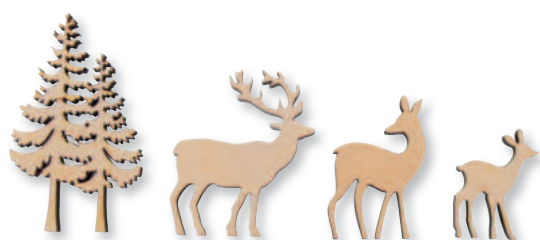


46 308 000 (4)
Wooden kit 3D motif frames, FSC 100%
20x20x6.6cm, Winterland, 14-part, 1set

Exclusive
by Rayher



The mark of
responsible forestry



46 584 505 (8)
Wood scattering elem.Deer,FSC Mix
Credit
4-part, 4-8cm, 5mm thick, tab-box 1set
natural

Exclusive
by Rayher



The mark of
responsible forestry



46 823 000 (8)
Wood deco shapes Winter, FSC 100%
4cm, with adhesive dot, tab-bag 11pcs

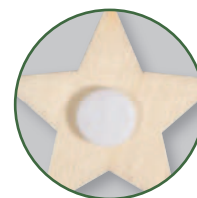


The mark of
responsible forestry



63 502 000 (4)
CK: Wooden beads Stars "Classic", 8cm
Ø
Beads+threading wire+instruct.,set 3 pcs

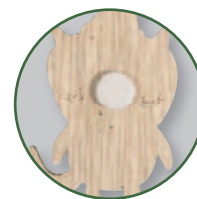
Exclusive
by Rayher



46 822 000 (8)
Wood deco shapes Star, FSC 100%
ø2,2-4.4cm, +adhesive dot, tab-bag 12pcs



The mark of
responsible forestry



46 824 000 (8)
Wood shapes Fox&Co., FSC 100%
2.8-4.5cm, + adhesive dot, tab-bag 9pcs

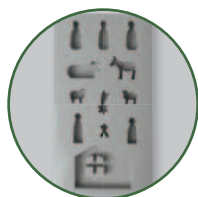


The mark of
responsible forestry



63 503 000 (4)
CK: Wood beads Star
"Nordic"2x7cm+1x11cm
Beads+threading wire+instruct.,set 3 pcs

Exclusive
by Rayher



36 164 000 (5)

Silicone mould Mini Christmas crib
14.5x26x1cm, 12 moulds, tab-box 1pc

für · pour · for
12



36 131 000 (5)

Silicone casting mould Crib
2-part mould with 11 shapes, box

für · pour · for
11

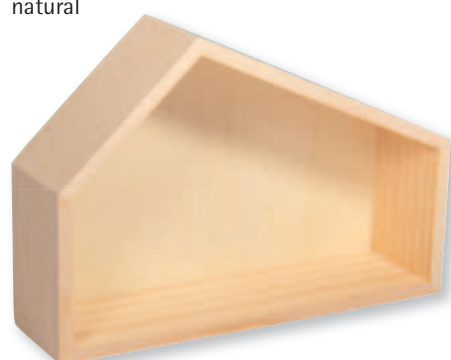
- **Casting mould** made of high-quality silicone
- Particularly elastic material
- **Reusable**
- Frost- and heat-resistant (from -40°C up to 240°C)
- Very easy to demould and dimensionally stable
- Ideal for casting with **creative-concrete**, **decorative concrete**, **Raysin**, **cast resin** and **wax**

Application tip:

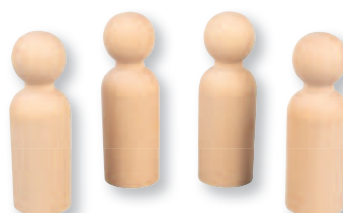
- The moulds can be filled in at **different height levels**: at low level for filigree pendants/figurines and high level for decorative display



64 539 505 (3)
Wood Christmas crib w. figures, FSC
100%
22x5.6x21.5cm, 9-part, box 1set
natural



64 535 505 (6)
Wood house Pitched Roof, FSC 100%
22x5.6x15cm
natural



64 536 505 (5)
Raw wood peg doll, FSC 100%
7.7cm, tab-bag 4pcs
natural



64 537 505 (5)
Unfinished wood peg doll, FSC 100%
3.3+7.7cm, assorted, tab-bag 3pcs
natural



67 285 104 (8)
Decorative paper grass
bag 50g
ivory



53 000 25 (10)
Felt cuts
20x30cm, 0,8-1 mm
grey
100% Viscose



62 295 000 (6)
Wooden storage case FSC Mix Credit
15x10x5.5cm





62 854 505 (3)
Wood.const.kit,3D-motif frames, FSC
100%
24x24x6.6cm, 8-part, box 1Set
natural

Exclusive
by Rayher



Christmas decoration



62 889 505 (3)
Wood kit 3D motif frames, FSC Mix
Credit
24x24x6.3cm, crib, 13-part, box 1set
natural

Exclusive
by Rayher

DIY
Set



Content: 7 plates



64 538 505 (8)
Wood deco Nativity figure,FSC Mix
Credit
1-7.5cm, 6mm thick, tab-bag, 12pcs
natural

Exclusive
by Rayher

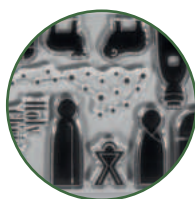


62 601 000 (4)
Wooden case FSC Mix Credit
20x10x5cm, pull-out compartment



46 624 505 (8)
Decor.wood shapes Stars, FSC Mix Credit
assorted, 1.2 cm ø, tab-bag 40pcs
natural

Exclusive
by Rayher



50 277 000 (4)

Clear Stamps - Christmas crib

97x205mm, 17 motifs, tab-bag 1sheet



67 390 000 (5)

Transfer paper w.template Nativity scene

5xA4 transfer paper+template, tab-bag



- **Universal transfer paper**
- For effortlessly transferring of templates to various substrates (wood, leather, canvas, fabric)
- The black carbon paper produces **clear and sharp contours**
- Individually combinable motifs
- Can be used repeatedly
- Especially suitable for the application of the **wood burning pen** on wood

Contents:

Thematically sorted painting templates
5 transfer papers





64 645 000 (8)
Wood decorative pendant, FSC Mix Credit
Ø 6.5-12cm, assorted, box 14pcs
100% Polyester

Exclusive
by Rayher



63 053 505 (5)
CK wood tree pendant, FSC Mix Credit
4.7x4.7x10.5cm, box 4pcs
natural

Exclusive
by Rayher



46 653 999 (6)
Wooden Santa to hang up
2.2x13cm, assorted, tab-bag 3pcs
coloured



46 770 000 (24)
Wood deco Fox, Reindeer, Fir, FSC 100%
7x7.5cm, to hang up, 24pcs



46 771 000 (30)
Wood deco Angel, to hang, FSC 100%
10cm, assorted, 30pcs





Exclusive
by Rayher



62 881 505 (12)
Wood inlay Snowflakes, FSC Mix Credit
5.5cm ø, 5-part, tab-bag 1set
natural



39 016 37 (50)
Plastic ball, 2 parts, 6cm ø
crystal



Wooden plug-in parts for 6 cm sphere

6 cm



62 884 505 (10)
Wood inlay Winter village, FSC Mix Credit
7.5cm ø, 5-part, tab-bag 1set
natural



39 066 37 (20)
Plastic ball, two parts, 8 cm ø
crystal



62 883 505 (10)
Wood inlay Forest animals, FSC Mix Credit
7.5cm ø, 5-part, tab-bag 1set
natural



63 058 505 (10)
Wood inlay, FSC Mix Credit, 7.5cm ø
Nutcracker, 5-part, tab-bag 1set
natural



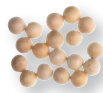
63 059 505 (10)
Wood inlay, FSC Mix Credit, 7.5cm ø
Snowman, 5-part, tab-bag 1set
natural



63 060 505 (10)
Wood inlay, FSC Mix Credit, 7.5cm ø
Mountain hut, 5-part, tab-bag 1set
natural

Wooden plug-in parts for 8 cm sphere

8 cm



67 401 000 (5)

3D paper Magic Stars set

for 3 stars, incl. wooden beads, tab-bag



- DIY magic stars: Christmas made easy!
- 3 decorative stars (14cm, 16cm, 22cm) made from **paper bags**, then adorned with wooden beads and paper stars
- The black bags have a unique look due to their natural brown interior

Contents:

30 mini paper bags, black
18 raw wood half-beads, 6mm
Special double-sided adhesive tape, 10m
Nylon thread, 2m
Instructions and pattern sheet



67 402 000 (5)

3D paper Beautiful Stars set

for 3 stars, incl. wooden beads, tab-bag



- DIY magic stars: Christmas made easy!
- 3 decorative stars (18cm, 22cm, 23cm) made from **paper bags**, then adorned with wooden beads and paper stars
- The black bags have a unique look due to their natural brown interior

Contents:

30 mini paper bags, black
30 raw wood beads, 4mm
6 raw wood beads, 6mm
Special double-sided adhesive tape, 10m
Nylon thread, 2m
Instructions and pattern sheet



67 400 102 (5)
Magical 3D paper stars set
for 11 stars, incl. wooden beads, tab-bag
white

Exclusive
by Rayher



DIY
Set

- DIY kit for making magical 3D stars out of paper bags of various sizes
- For making 11 paper bag stars (1x 30cm, 1x 20cm, 1x 12cm, 8x mini-star - 5.3cm each)
- Paper bag stars are made from high-quality paper bags and adorned with wooden beads and paper stars
- Ideal for enchanting interior decorations

Contents:

38 mini paper bags XL (5.3 x 16cm)
2 paper sheets (DIN A5)
8 raw wood balls (ø 8mm)
16 raw wood balls (ø 10mm)
16 raw wood half-balls (ø 6mm)
10m special double-sided adhesive tape
5m nylon thread
Instructions + cut-sheets



67 391 000 (5)
Set of 3D mini-mini paper bag stars
for 21 stars, incl. wooden beads, tab-bag

Exclusive
by Rayher



DIY
Set

- DIY set for enchanting mini paper bag stars with 3D starburst
- Set for 21 little stars made from mini paper bags, adorned with raw wood balls
- Coordinated colours in natural shades
- Perfect as a gift tag, window decoration or Christmas bauble

Contents:

6 mini paper bags XXS (white, 4.5 x 6cm)
6 mini paper bags XXS (kraft, 4.5 x 6cm)
6 mini paper bags XXS (burgundy, 4.5 x 6cm)
42 raw wood balls (ø 10)mm
21 raw wood beads (ø 8mm)
42 raw wood half-balls (ø 6mm)
10m nylon thread
Instructions



46 714 000 (8)
Felt Christmas tree with hearts, to hang
6x17cm
100% Polyester



46 713 000 (8)
Felt Christmas tree to hang
6x17cm
100% Polyester





29 278 000 (5)

Stamp "Wichtel", 3cm ø



29 279 000 (5)

Stamp "Engelchen", 3cm ø



29 280 000 (5)

Stamp "Schweinchen", 3cm ø



29 281 000 (1)

Stamp "Oh du fröhliche"
4x8cm



Exclusive
by Rayher

BUTTERFLY



29 282 000 (1)

Stamp "Leise rieselt der Schnee"
6x7cm



29 283 000 (1)

Stamp "frohes Fest"
4x5cm



29 284 000 (1)

Stamp "Schöne Weihnachten"
7x7cm



29 285 000 (1)

Stamp "Merry Xmas"
2x10cm





50 299 000 (6)

Clear Stamps - Christmas border trims
102.5x97mm, 5 motifs, tab-bag 1sheet

Exclusive
by Rayher



Acid free


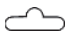


29 286 576 (1)

StazOn pigment ink-pad, set of 3
black





 
55 967 000 (8)
Decorative gift tag set
 assorted, tab-bag 1set



Contents:
 6 wooden fir trees with jute cord
 6 paper gift tags (4.5x7.3cm)
 6 boxwood shrub branches (length 9cm)
 3 conifer twigs (length 14cm)
 5m cord (100% jute)



 
46 826 000 (8)
Felt bow on clothes peg, FSC 100%
 7x2,8x8,5cm, tab-bag 2pcs
 100% Polyester





 
46 827 000 (8)
Metal star on clothes peg, FSC 100%
 4.2x1.6x6cm, tab-bag 3pcs
 100% Polyester



 
46 821 000 (8)
Wood gnome on clothes peg, FSC 100%
 2,2/3x1,2x4.8cm, tab-bag 6pcs



 
46 665 999 (8)
Felt + wood X-mas tree on clothes peg
 3x5.2cm, tab-bag 6pcs
 coloured

Textile composition:
 Beard, nose: 100% polyester



55 704 616 (8)
Giltter ribbon
 5mm, tab-roll 10m
 gold
 100% Polyester



51 704 616 (10)
Cord, 1mm ø
 clew 20m
 gold
 60% Viscose, 40% Polyester



51 704 287 (10)
Cord, 1mm ø
 clew 20m
 classic red
 60% Viscose, 40% Polyester



55 961 000 (38)
Ribbon display "Nature X-Mas"
 10 ribbons/cords of 2+10m, total of 38pcs



Textile material specification:

Strands: 100% cotton
 Cords (two-tone): 100% cotton
 Cords: 100% jute



55 964 000 (60)
Ribbon display "Homely Christmas"
 10 diff. ribbons, 2-3m each, total 60 pcs





55 968 000 (35)

Ribbon display "Nature Christmas"

10 ribbons/cords of 2+12m, 35 pcs in all



Textile composition:

Small threads with golden strands: 91% cotton, 9% polyester

Small threads: 100% cotton

Cord with golden strands: 99% polyester, 1% polyacrylic

Christmas decoration



55 969 000 (60)

Ribbon display "Nordic Christmas"

10 differ.ribbons of 2-3m, 60 pcs in all



From the mystic to the magic

Enchanting world of gnomes

Christmas promises to be a magic one: with the arrival of a little Christmas gnome during Advent, a wonderful adventure begins for the whole family. In the mysterious world of gnomes, magic and imagination come to life.

Creating a comfortable home for the gnome is a great way to unfold your creativity. We have the right accessories for your customers. Designing a little door for gnome can result in a little work of art with bright colours, playful decorations and filigree details. To provide the gnome with a little cosy spot, you can use small trees, fine snowflakes or shiny string of lights. Or how about a pretty wellness oasis made from natural materials?

The stories about Christmas gnomes operating in secret are as varied as the decoration possibilities. Whether it's about pretty decorative wooden shapes, creative punch templates or original casting moulds, all these items are perfectly suited to the festive Christmas decoration. Not only do they create a magical atmosphere, they're also perfect as gifts from the heart.

Each night offers new opportunities for the gnome to express his imagination and his joy. Childish pranks and affectionate gestures turn the home into a magical kingdom where every day brings unexpected surprises. So the period leading up to Christmas will be an unforgettable experience for everyone, marked by deep family ties, shared creativity and the special magic of the gnome world.



CREATIVE

Creating modern fairytale worlds

In the mysterious world of gnomes, the whole family's creativity takes flight during the Advent season. There are lots of creative ways for your customers to make a little house for

the Christmas gnome. Bright colours, playful decorations and filigree details enable the creation of a fanciful gnome world.

INDIVIDUAL

There are no limits to the imagination

With craft accessories such as wooden shapes, Clear stamps and casting moulds, it's easy to add decorative touches that reflect the artist's personality.

These touches create an individual Christmas atmosphere, tailored to suit different tastes and styles.

MAGIC

Making children's eyes sparkle with joy

The magic of the gnome world is revealed in nocturnal childish pranks and quirky surprises played by gnomes at night. Every day brings a new exciting adventure

filled with magic and the anticipation of Christmas. The life of gnomes in hiding gives Advent a special magic that fascinates young and old alike.









46 795 505 (4)

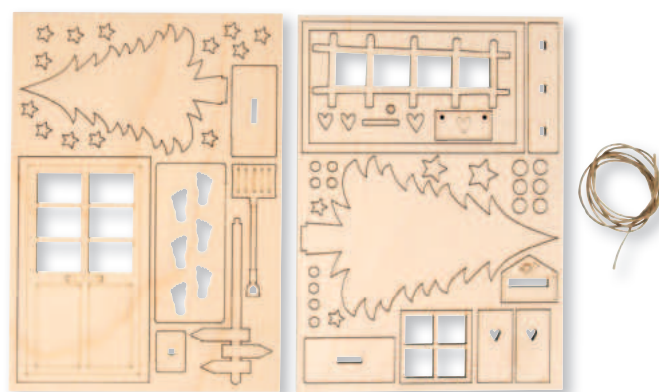
Wood build.kit Gnome house, FSC Mix

Credit

13.5x6.5x17.5cm, box 1set
natural



- Who's there? The little **wooden gnome house** should not be missing in any household in the run-up to Christmas
- This **Scandinavian trend** has been growing in popularity for years
- During the great season of Advent, the little gnome makes himself cosy in the gnome house
- The wonders of imaginative storytelling follow him mysteriously: he is also the source of all kinds of fun, pranks and wonderful adventures
- He lives in hiding, because it's the only way to keep his powers. Then, after Christmas, he leaves.
- The **Gnome House wooden building kit** is easy to **customise**, **light up** and creatively **enhance** with other **decorative accessories related to the world of gnomes**



64 671 505 (6)

Wood gnome door Lasse, FSC Mix

Credit

0.4-14.3cm, 53-part+cord, tab-bag 1set
natural



- Who's there? The **wooden gnome door** should not be missing in any household in the run-up to Christmas
- This **Scandinavian trend** has been growing in popularity for years
- During the great season of Advent, the little gnome makes himself cosy behind the gnome door
- The wonders of imaginative storytelling follow him mysteriously: he is also the source of all kinds of fun, pranks and wonderful adventures
- He lives in hiding, because it's the only way to keep his powers. Then, after Christmas, he leaves.



64 518 505 (6)

Wood door gnome Nisse, FSC Mix Credit

1-12.9cm, 26-part, tab-bag 1set
natural



64 519 505 (6)

Wood gnome door Tomte, FSC Mix
Credit

1-12.8cm, 24-part, tab-bag 1set
natural



- Gnome – this Scandinavian **creature** impresses **young and old** and is gaining in **popularity worldwide**
- A **wooden gnome door** should therefore **not be missing in any household** in the pre-Christmas period
- **At the beginning of Advent**, the gnome moves in behind a **wooden gnome door**

- Amazing stories entwine around this creature: it ensures extraordinary fun, plays tricks, leaves letters or little surprises at night – however the gnome remains hidden and lives unnoticed, because that's the only way to keep its power
- The **gnome doors** are lovingly designed, thus the **magical gnome world** can be decorated with all kinds of creative material (little trees, snowflakes, string lights...)



46 814 505 (8)

Mini wood garment rack, FSC 100%
11.5x12cm, +5 coat-hangers, tab-bag 1set
natural



The mark of
responsible forestry

- The wooden clothes rack is supplied as inset pieces, which simply need to be stretched out to the required length
- Then, hang the coat-hangers on which will be later hung the „Lasse“ mini knitted jumper with scarf (item no.46815000) and the mini denim dungarees (item no.46825000)



46 815 000 (8)

Mini knitted jumper "Lasse" + scarf
5.5x8.5cm, tab-bag 1set
100% Polyacrylics

- The mini knitted jumper with scarf is perfectly suited to the **gnome range** of Rayher
- Matching the mini denim dungarees (item no.46825000) and the wooden clothes rack with mini coat-hangers (item no.46814505)

Dimensions:
Knitted jumper: 8.5x5.5cm
Scarf: approx. 3x6cm



46 825 000 (8)

Mini denim dungarees
9.5cm, tab-bag 1pc
100% Polyester

- The mini denim dungarees are perfectly suited to the **gnome range** of Rayher
- Matching the mini knitted jumper with scarf (item no.46815000) and the wooden clothes rack with mini coat-hangers (item no.46814505)





46 820 000 (6)
Mini wood bench, FSC 100%
8x3.5x6.2cm, +2 cushions, tab-bag 1set
100% Polyester



46 819 505 (6)
Mini wood tabl with 2 stools, FSC
100%
8x5x4.5cm +3.5x3.8cm, tab-bag 1set
natural



46 818 505 (8)
Mini wood chairs, FSC 100%
2,2x2,5x4cm, tab-bag 2pcs
natural



46 817 000 (8)
Mini wood toolbox, FSC 100%
4.5x2.5x4.1cm, +tool, tab-bag 1set



46 816 000 (8)
Mini decorative string lights
length 1m, approx.35 lights, tab-bag 1pc





25 115 00 (3)
Metal set of pots
3-5cm, set 3 pcs.



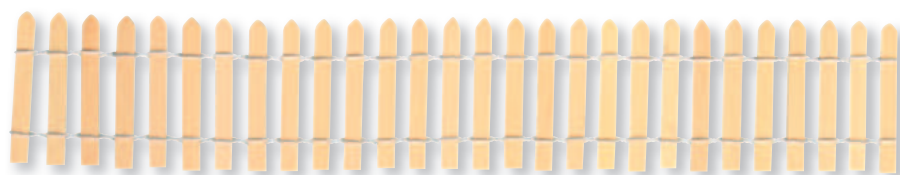
46 071 000 (6)
Wooden ladder
13.5cm, 5 rungs, tab-bag 1pc



88 815 00 (10)
Decorative broom, 9,5 cm
tab-bag 3 pcs.



46 072 000 (4)
Wooden barrow
12cm, tab-bag 1pc



46 073 505 (6)
Garden fence
30x5.5cm, tab-bag 1pc
natural



46 598 282 (10)
Christmas wreath miniatures
2 pcs ø 5cm+3 pcs ø 3cm, tab-bag 5pcs
carmine



46 664 999 (8)
Wooden sledge + ski + beany
assorted, tab-bag 3pcs
coloured

Dimensions:

Knitted beanie: ø 3.2 × 4.5cm
Wooden sledge: 7.5 × 3.2 × 2.1cm
Wooden skis: 2.4 × 1.2 × 6.8cm



36 189 000 (5)

Silicone mould Gnome family
14.5x26x1cm, 9 shapes, box 1pc

für · pour · for
9



- **Casting mould** made of high-quality **silicone**
- Particularly elastic and resilient material
- Reusable
- Frost- and heat-resistant (from -40°C up to 230°C)
- Very easy to demould and dimensionally stable
- Ideal for casting with **creative-cement**, **creative-cement 5-in-1**, **Raysin**, casting resin

Motif dimensions:

Large tree: 10.2x8.8cm

Medium-sized tree: 7x6cm

Small tree: 4.3x3.8cm

Large gnomes: approx. 8.8x3cm; 7.6x3cm; 7.5x3.5cm

Little gnomes: approx. 5.5x1.9cm; 5x2cm; 4.6x2.2cm





36 122 000 (5)
Silicone casting mould Gnome
14.5x26x1cm, 6 moulds, box 1pc



- **Casting mould** made of high-quality **silicone**
- Particularly elastic material
- **Reusable**
- Frost- and heat-resistant (from -40°C up to 240°C)
- Very easy to demould and dimensionally stable
- Ideal for casting with **creative-concrete**, **decorative concrete**, **Raysin**, **cast resin** and **wax**

Application tip:

- The moulds can be filled in at **different height levels**: at low level for filigree pendants/figurines and high level for decorative display

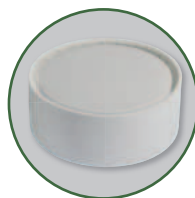




36 193 000 (6)

Silicone mould Bowl row of gnomes

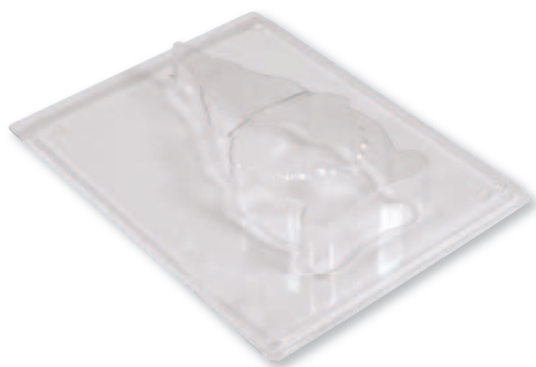
Ø 13.5cm x H 5cm



- **Casting mould** made of high-quality **silicone**
- Particularly elastic and resilient material
- **Reusable**
- Frost- and heat-resistant (from -40°C up to 230°C)
- Very easy to demould and dimensionally stable
- Ideal for casting with **creative-cement**, **creative-cement 5-in-1**, **Raysin**, casting resin

Wall thickness 7 mm





36 144 000 (4)

PET Casting mould Gnome, small

Motif: 11.7x5.2cm, depth up to 1.8cm



36 161 000 (3)

PET casting mould Gnome

Motif: 17x7.8cm, depth up to 3cm



- **Versatile casting mould** made of PET
- Clear, dimensionally stable material
- **Reusable**
- Heat-resistant (up to about 60°C)
- Ideal for casting with **creative-cement** & **creative-cement 5-in-1**, **decorative concrete**, **Raysin**, **sidewalk chalk** and **soap**
- Application tips:**
- The moulds can be poured at **different heights**: low for filigree pendants and high for decorative stand-up displays
- **Labels of Rayher** are perfectly matched to the size of the moulds



46 804 505 (8)

Veneer wood gnome family
3.6-9cm, 1mm thick, tab-bag 18pcs
natural



46 806 505 (8)

Wood veneer strip Gnome family
2x9.2x5.4+13.2x5.4cm each, tab-bag 4pcs
natural



Thickness 1mm



46 625 505 (8)
Wood dec.Gnomes, FSC Mix Credit, sort.
2.5-9cm, + cord 0.5m, tab-bag 7pcs
natural



46 798 505 (8)
Wood decor Gnome family, FSC Mix
Credit
4.5-9cm, + cord, tab-bag 8pcs
natural





46 805 505 (8)

Wooden strip Gnome family, FSC Mix

Credit

9.2x5.4 + 13.2x5.4cm, tab-bag 2pcs
natural



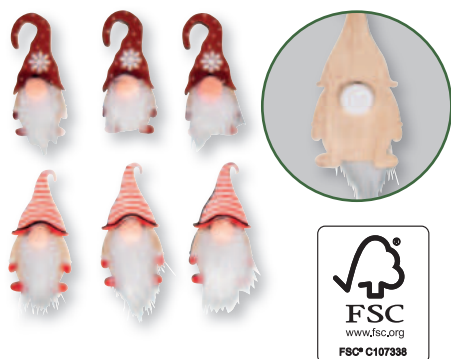
46 799 505 (8)

Decorat.wood picks Gnome, FSC Mix

Credit

13.3-15cm, tab-bag 6pcs
natural





46 792 000 (8)
Wooden shapes Gnome, FSC 100%
2.3x4.5cm, w. adh.dot, tab-bag 6pcs



The mark of responsible forestry



46 761 000 (8)
Wooden shapes to scatter Gnome, FSC 100%
2.3x4.5cm, w. adh. dot, tab-bag 6pcs



The mark of responsible forestry



46 623 505 (8)
Decor.wood stars, FSC Mix Credit, sort.
3.5-5.7cm, +cord 0.5m, tab-bag 10pcs
natural



The mark of responsible forestry

Exclusive
by Rayher

Textile composition:
Beard, nose: 100% polyester



46 612 999 (8)
Wooden shapes Stars, 3.5cm
with adhesive dot, tab-bag 12pcs
coloured



46 661 999 (8)
Wood shapes to scatter Star, 3.2-5cm
assorted, w. adh. dot, tab-bag 15pcs
coloured

Colours: black,
white + natural



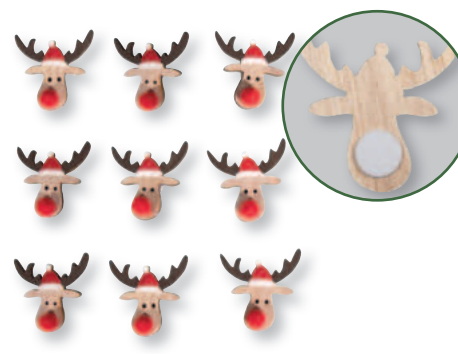
46 666 999 (8)
W.shapes to scatter Angel+Star, 3.7cm
3.6x4cm, w. adh. dot, tab-bag 12pcs
coloured



46 622 505 (8)
Wood deco Snowflakes, FSC Mix Credit
5-9cm, + Cord 0.5m, tab-bag 6pcs
natural

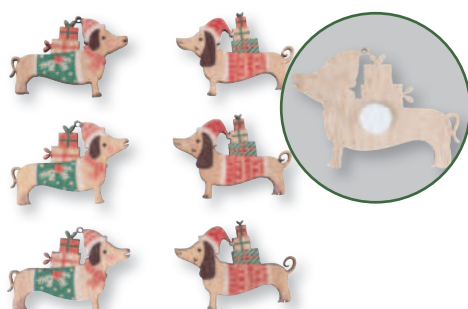


The mark of responsible forestry



46 614 999 (8)
Wood shapes to scatter X-mas elk
3.8x3.5cm, w. adhes. dot, tab-bag 9pcs
coloured

Exclusive
by Rayher



46 710 000 (8)
Wood decor. shapes Christmas dachshund
4.4x3.2cm, w. adh. dot, tab-bag 6pcs



46 654 999 (8)
Wood shapes to scatter Bear, Fox, Deer
3.8-5cm, w. adh. dot, tab-bag 6pcs
coloured



**DIY
Set**

**Exclusive
by Rayher**



64 517 505 (4)
Wood lantern Gnome, FSC Mix Credit
15.3x15.3x26.5cm, 31-part, box 1set
natural



- **DIY wooden lanterns** with various motifs
- As a **decorative element** in the **children's room** or as a lantern for **Halloween** and **St. Martin's Day**
- Equipped with a practical **handgrip**

Usage tips:

- Design the wooden lanterns with paint, glitter or effect-foils (e.g. item no. 23 092 000)
- Illuminate them with **LED tealights** (item no. 69 258 102) or with **LED string lights** (items no. 69 169 102 + 69 137 000)
- **Please note:** only illuminate it with LED lighting elements, do not use open flame!



46 670 505 (5)
Wooden kit Motif frames, FSC Mix Credit
15.5x3.8x12.5cm, gnome. 16-part, 1set
natural



Contents:

- 4 boards
- 4 parts for the side panels and the bottom
- 7 stars
- Yarn



46 671 505 (8)

Wooden kit Gnome, FSC Mix Credit
11.5x5x16.5cm, 12-part, tab-bag 1set
natural



46 672 505 (8)

W.insert-in piece Gnome, FSC Mix Credit
8.4cm, 6cm ø, tab-bag 2 sets, natural

2×



46 122 000 (8)

Plastic dome with base, 8cm ø
13cm, with cord of jute





46 828 000 (35)
Velvet gnome
12x2.5cm, assorted
100% Polyester



46 616 000 (35)
Velvet gnome
12x2.5cm, assorted
100% Polyester



46 649 000 (42)
Felt gnome
2.5x12cm + 3x10cm, assorted
100% Polyester

Exclusive
by Rayher



46 725 000 (42)
Felt gnome
10cm, assorted
100% Polyester

Exclusive
by Rayher



55 800 102 (8)
Long-haired plush
60x10cm, tab-bag 1pc
white
80% Polyester, 20% Cotton





43 009 000 (6)
CK Metal fir tree Gnome
 13.2-18cm, 3 designs, tab-bag 3pcs



Contents:

3 metallic fir trees 7.2×11.8cm
 3 felt hats, 2-part each
 3 plush beards, white
 3 pom-poms, white ø 1.8cm
 3 wooden half-beads ø 1.4cm
 3 wooden beads, white ø 1cm
 3 jute cord, 30cm each

Gnome dimensions (without cord):
 7.2×15.2cm, 7.2×18cm, 10×13.2cm

Textile composition:

Felt, plush, pom-pom: 100% polyester
 Cord: 100% jute



43 010 000 (6)
CK Metal star Gnome
 13.5-17.5cm, 3 designs, tab-bag 3pcs



Contents:

3 metallic stars ø 12cm
 3 felt hats, 2-part each
 3 plush beards, white
 3 pom-poms, white ø 1.8cm
 3 wooden half-beads ø 1.4cm
 3 wooden beads, white ø 1cm
 3 jute cord, 30cm each

Gnome dimensions (without cord):
 11.8×13.5cm, 13.5×16cm, 13.5×18cm

Textile composition:

Felt, plush, pom-pom: 100% polyester
 Cord: 100% jute



Exclusive
by Rayher

BUTTERER



29 270 000 (2)

Stamp "Frohes Fest" Gnome greetings
6x6cm



29 224 000 (2)

Stamp "Es wickelt"
6x10cm



29 239 000 (2)
Stamp Gnome Theo
3x4cm



29 240 000 (2)
Stamp Gnome Elton
3x6cm





50 298 000 (4)

Clear Stamps - "Wichtelpost"

97x205mm, 14 motifs, tab-bag 1sheet



50 254 000 (6)

Clear Stamps - Christmas Gnome

102.5x97mm, 14 motifs, tab-bag 1sheet



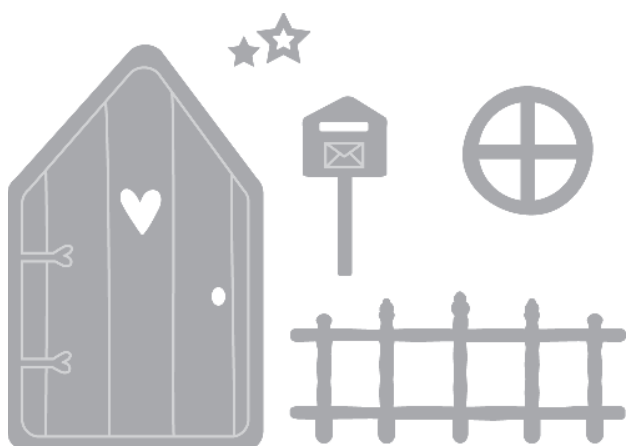
50 266 000 (6)

Clear Stamps - Gnome World

102.5x97mm, 13 motifs, tab-bag 1sheet



50 268 000 (3)
Punching template Gnome Family
11.8x4.8 cm, 1-part, tab-bag



50 269 000 (3)
Punching template Gnome World
0.4-4.6cm x 0.4-5.5cm, 5-part, tab-bag



Punching templates made of 100 % steel – Made in USA

- Stable, durable and versatile
- Can be used with all common punching devices
- Especially suitable for thicker and firmer materials: cardboard, foils, foam rubber, leather, felt, wood, etc.



From hygge to scandi chic

Home, sweet home with a nordic look

Turning home into a cosy oasis of wellness!

It's not just during the cold season that we yearn for a resting place where we can take a step back from the hustle and bustle of everyday life, and enjoy peace and quiet in privacy.

Our new casting moulds Nordic Houses provide the perfect sense of well-being in the Hygge style. The small architectural works of art give off a feeling of cosiness and warmth, and create a pleasant atmosphere.

With the creative casting moulds within our range, your customers can give rise to little worlds full of dream houses. In combination with our high-quality wood veneer house silhouettes, a harmonious, modern and timeless duo is created. The matching felt decorative elements fit in perfectly with the overall look, opening up even more design possibilities. While the cool, modern Raysin material adds a sophisticated touch, the warm wood brings a sense of Scandinavian lifestyle comfort to every room.

To enhance the feeling of warmth and cosiness, there are our light-up houses. These charming light sources create a warm, welcoming atmosphere.

Items made of Raysin, wood or paper are not only ideal for turning your home into a cosy resting place, but also to be given as gifts. Lovingly decorated houses are always appreciated for their true worth.



CREATIVE

Raysin meets wood and felt

Our casting moulds Houses are designed to fit perfectly with the matching wooden and felt houses. The new Nupsi placeholders for casting moulds Houses provide space for our cute house-shaped decorative elements.

And here's how it works: start by casting houses with the casting mould of your choice. Then insert the corresponding wooden silhouette or felt shapes into the resulting empty space, glue them together, decorate them – and that's it!



Item no. 36 156 000

+



Item no. 46 813 000

=



INDIVIDUAL

To each what suits them best

Whether it's about nordic houses, light up houses, white or black Raysin casting powder, wood, felt or paper houses: entire decorative villages can be created using a variety of

materials. There are unlimited possibilities for combining houses or adding other houses and inventory items to suit individual tastes and styles.

HYGGELY

Home comfort

With our 'Home' products, your customers can easily create an atmosphere of well-being at home. With special casting moulds and materials, individual mini houses arise that can

be decorated to your liking. There are no limits to creativity – that's how you turn your home into a hygge-style resting place!









 **36 170 000 (5)**
Silicone mould Mini nordic houses
14.5x26x1.5cm, 12 shapes, box 1pc



für · pour · for
12



 **36 190 000 (5)**
Silicone mould Nordic houses
14.5x26x1.7cm, 3 shapes, box 1pc



für · pour · for
3



- **Casting mould** made of high-quality silicone
- Particularly elastic and stable material
- **Reusable**
- Frost- and heat-resistant (from -40°C up to 240°C)
- Very easy to demould and dimensionally stable
- Perfectly suitable for casting with **creative-cement**, **Raysin** and **casting resin**



36 176 000 (5)
Silicone mould Light-up houses 2
14.5x26x1.7cm, 4 shapes, box 1pc



36 132 000 (5)
Silicone mould Illuminated house
14,5x26x1.7cm, 4 shapes, box 1pc



- **Casting mould** made of high-quality silicone
- Particularly elastic material
- **Reusable**
- Frost- and heat-resistant (from -40°C up to 240°C)
- Very easy to demould and dimensionally stable
- Ideal for casting with **creative-concrete**, **decorative concrete**, **Raysin**, **cast resin** and **wax**

Application tip:

- The moulds can be filled in at **different height levels**: at low level for filigree pendants/figurines and high level for decorative display



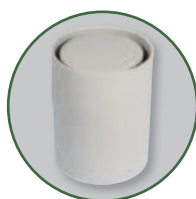
36 156 000 (5)
Silicone mould Mini houses
14.5x26x1.5cm, 15 moulds, box 1pc



für-pour-for
15



36 194 000 (6)
Silicone mould Candle holder Houses
ø 8cm x H 11.20cm

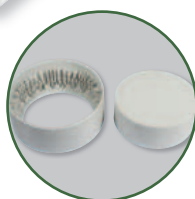


- Casting mould made of high-quality silicone
- Particularly elastic and resilient material
- Reusable
- Frost- and heat-resistant (from -40°C up to 230°C)
- Very easy to demould and dimensionally stable
- Ideal for casting with creative-cement, creative-cement 5-in-1, Raysin, casting resin

Motif dimensions:
Wall thickness 5 mm





 
36 192 000 (6)
Silicone mould Bowl row of houses
 Ø 13.2cm x H 5cm



- **Casting mould** made of high-quality **silicone**
- Particularly elastic and resilient material
- **Reusable**
- Frost- and heat-resistant (from -40°C up to 230°C)
- Very easy to demould and dimensionally stable
- Ideal for casting with **creative-cement**, **creative-cement 5-in-1**, **Raysin**, **casting resin**

Wall thickness 7 mm



 
46 797 000 (6)
Glass vase, 11cm Ø
 18cm, cylinder shape



- Glass vase perfectly suited to the silicone casting mould Bowl with House Rim (item no.36192000) and to the Bowl with Gnome Rim (item no.36193000)



 
36 058 000 (4)
casting mould: houses
4 houses 5,5-10,5cm, depth 3cm



 
36 059 000 (4)
Casting mould: Houses
2 houses 13,5-16,5cm, depth 3cm



 
36 129 000 (4)
PET casting mould Houses, pitched roof
3 houses, depth of 3cm



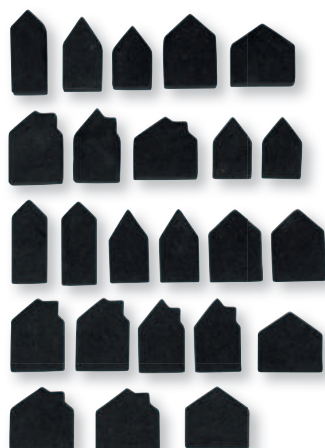
 
36 060 000 (3)
Casting mould: House
16,5x17,5cm, depth 4cm



- Versatile casting mould made of PET
- Clear, dimensionally stable material
- Reusable
- Heat-resistant (up to about 60°C)
- Ideal for casting with creative-cement & creative-cement 5-in-1, decorative concrete, Raysin, sidewalk chalk and soap

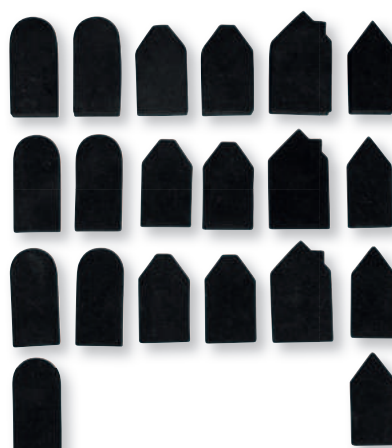
Application tips:

- The moulds can be poured at **different heights**: low for filigree pendants and high for decorative stand-up displays
- Labels of Rayher are perfectly matched to the size of the moulds



30 243 000 (6)

Nupsi placeholder Mini House
assorted, tab-bag 24pcs



30 244 000 (6)

Nupsi placeholder Nordic Houses
assorted, tab-bag 20pcs

- **Nupsi placeholder Mini House** to insert in when casting with PET and silicone casting moulds of Rayher
- Thickness: 4 and 10 mm
- Make **room** for incorporating e.g. **wooden shapes Mini House** (item no.46749505), **felt shapes Mini House** (item no.46813000) or **veneer wood Mini Houses** (item no.46754505, houses can be used separately) after drying
- Made of foam rubber: it can be used 2-3 times if used properly

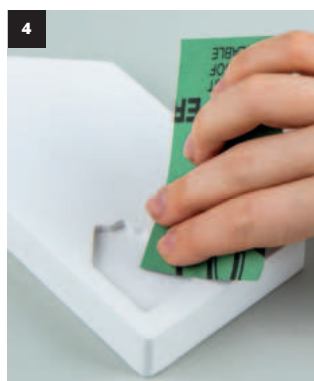
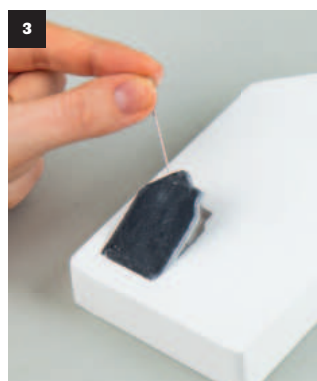
Contents:

8 different house designs: 1.6×4.8cm, 1.8×2.8cm, 1.8×3.4cm, 2.2×3.4cm, 2.4×3.4cm, 2.5×3.4cm, 2.9×2.8cm, 2.9×2.9cm
Per design: 1× 10mm thick + 2× 4mm thick

- **Nupsi placeholder Nordic Houses** to insert in when casting with PET and silicone casting moulds of Rayher
- Thickness: 4 and 10 mm
- Makes **room** for incorporating e.g. **wooden shapes Nordic Houses** (item no.46810505), **felt shapes Nordic Houses** (item no.46808000) or **veneer wood strip Nordic Houses** (item no.46809505 - houses can be used separately) after drying
- Made of foam rubber: it can be used 2-3 times if used properly

Contents:

2×4.2cm: 1× 10mm thick + 3× 4mm thick
2.7×4.6cm: 1× 10mm thick + 2× 4mm thick
2.2×4cm: 2× 10mm thick + 4× 4mm thick
2.2×4.4cm: 2× 10mm thick + 5× 4mm thick





46 808 000 (8)

Decorative felt shapes Nordic house

3.5-4.2cm + adhesive dot, tab-bag 12pcs
100% Polyester



46 813 000 (8)

Felt shapes to scatter Mini House

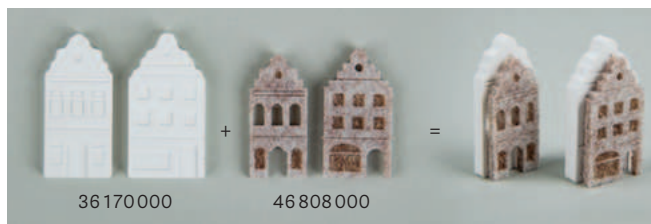
2.5-3.5cm + adhesive dot, tab-bag 14pcs
100% Polyester



46 807 000 (8)

Felt strip Nordic + Mini houses

3.4-4.2cm + adhesive dot, tab-bag 4pcs
100% Polyester



- **Decorative felt shapes Nordic Houses** are - as well as the decorative wooden shapes Nordic Houses (item no.46810505) and the veneer wood Nordic Houses (item no.46809505) - perfectly suited to the **silicone casting mould Mini Nordic Houses** (item no.36170000)
- These four items are ideal for making and crafting, and can be combined together
- The felt shapes are about 5% smaller than the Mini-Houses casting mould
- Not all mini-houses of the casting mould are included

Contents:

12 different designs, 1 piece of each



- **Decorative felt shapes Mini Houses** are - as well as the decorative wooden shapes Mini House (item no.46749505) - perfectly suited to the **silicone casting mould Mini Houses** (item no.36156000)
- These three items are ideal for making and crafting, and can be combined together
- The felt shapes are about 5% smaller than the Mini-Houses casting mould
- Not all mini-houses of the casting mould are included

Contents:

14 different designs, 1 piece of each



Contents:

2x felt strip Nordic Houses: 10.2x4.2cm + 13.8x4.2cm
2x felt strip Mini Houses: 10.6x3.4cm + 14.1x3.4cm



Exclusive
by Rayher



46 810 505 (8)

Wooden shapes Nordic, FSC Mix Credit
3.5-4.2cm, assorted, tab-bag 12pcs
natural



- **Decorative wooden shapes Nordic Houses** are – as well as the decorative felt shapes Nordic Houses (item no.46808000) and the veneer wood Nordic Houses (item no.46809505) – perfectly suited to the **silicone casting mould Mini Nordic Houses** (item no.36170000)
- These four items are ideal for making and crafting, and can be combined together
- The wooden shapes are about 5% smaller than the Mini-Houses casting mould
- Not all mini-houses of the casting mould are included

Contents:

12 different designs, 1 piece of each



46 749 505 (8)

Wood shapes Mini house, FSC Mix Credit
2.5-3.5cm, assorted, tab-bag 24pcs
natural

24×



- **Wooden shapes Mini house** adapted to the **silicone casting mould Mini houses** (item no.36 156 000)
- Both items can be **combined together**
- Wooden shapes are about 5% smaller than the castings „Mini houses“

Contents:

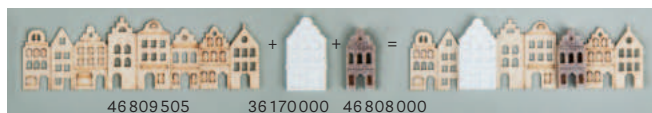
24 houses (2 pieces per design)



46 809 505 (8)

Veneer wood strip Nordic houses

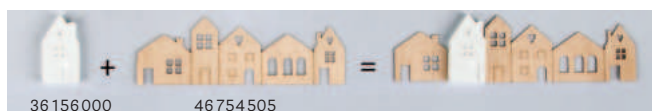
each 2x10.2x4.2+13.8x4.2cm, tab-bag 4pcs
natural



46 754 505 (8)

Plywood mini houses

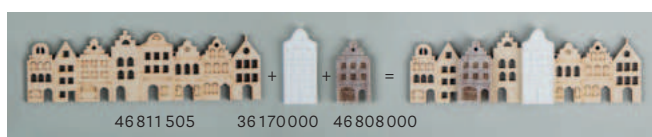
2x 10.6x3.4cm + 2x 14x3.4cm, tab-bag
natural



Thickness: 1mm



46 811 505 (8)
Wood strip Nordic houses, FSC Mix
Credit
10.2x4.2 + 13.8x4.2cm, tab-bag 2pcs
natural



46 751 505 (8)
Wooden strip Mini houses, FSC Mix
Credit
10.6x3.4 + 14.1x3.4cm, tab-bag 2pcs
natural





 
46 752 505 (8)
Plywood light up houses
5.5-10cm, 1mm thick, tab-bag 8pcs
natural

- Plywood "Lichthäuser" adapted to the silicone casting mould "Lichthäuser" (item no.36 132 000)
- Both items can be **combined together**

Dimensions:
3.4x5.5cm, 3.4x6.5cm, 4x10cm + 6.4x8.8cm (2 pieces per each)



 
46 750 505 (8)
Wood deco Light up houses, FSC Mix
Credit
5.5-10cm, 6mm thick, tab-bag 4pcs
natural



- Wood decoration "Lichthäuser" adapted to the silicone casting mould "Lichthäuser" (item no.36 132 000)
- Both items can be **combined together**

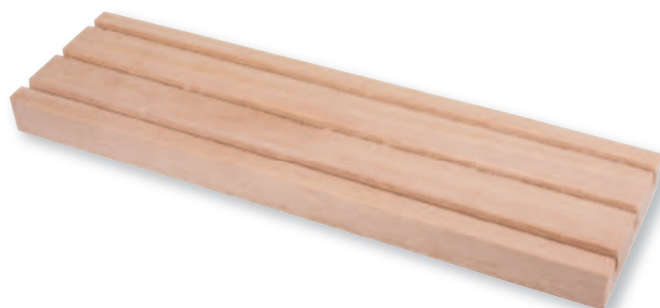
Dimensions:
3.4x5.5cm, 3.4x6.5cm, 4x10cm + 6.4x8.8cm (1 piece per each)





62 891 505 (6)
Wood.motif Houses, FSC Mix Credit
18x12cm, tab-bag 1Set
natural

Exclusive
by Rayher



62 833 000 (10)
Wooden holder with slots, FSC 100%
18x5cm, w. 3 slots, tab-bag 1pc



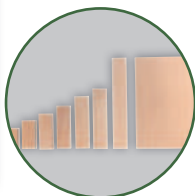
64 524 000 (8)
Wood grooved strip for rings, FSC 100%
20x4.8x5cm

Exclusive
by Rayher





34 Teile
Parties
Parts



64 649 505 (8)

Wood pen blank + plank set, FSC 100%

Mini, assorted, 34 parts, box 1set
natural



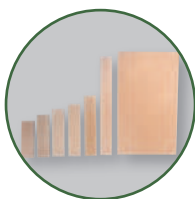
- Comprehensive wood pen blank kit "Mini" (34 pieces) made of high-quality European birch
- 32 wood pen blanks + 2 wood panels in total
- The wood pen blanks and panels can be combined with one another as desired - innumerable options for individual craft ideas
- Wood pen blanks are suitable for making roofs for the little houses of the silicone casting mould "Lichthäuser" (item no.36 132 000) and the silicone casting mould "Mini-Krippe" (item no.36 164 000)
- Trays or frames can also be created with them

Contents:

- 2x wood panel (12.5x8.3x0.4cm)
- 6x wood pen blank (3x2x0.5cm)
- 6x wood pen blank (4x2x0.5cm)
- 6x wood pen blank (5x2x0.5cm)
- 4x wood pen blank (6x2x0.5cm)
- 4x wood pen blank (7.3x2x0.5cm)
- 2x wood pen blank (8.3x2x0.5cm)
- 4x wood pen blank (12.5x2x0.5cm)



30 Teile
Parties
Parts



64 650 505 (4)

Wooden blocks + sheets set, FSC 100%

assorted, 30 parts, box 1set
natural



- Comprehensive wood pen blank kit (30 pieces) made of high-quality European birch
- 28 wood pen blanks + 2 wood panels in total
- The wood pen blanks and panels can be combined with one another as desired - innumerable options for individual craft ideas
- Wood pen blanks are suitable for making roofs for the little houses of the PET casting mould "Häuser" (items no.36 058 000, 36 059 000 + 36 129 000) and the silicone casting mould "Krippe" (item no.36 131 000)
- Trays or frames can also be created with them

Contents:

- 2x wood panel (20x12x0.7cm)
- 6x wood pen blank (7.5x2.4x0.8cm)
- 6x wood pen blank (8.5x2.4x0.8cm)
- 6x wood pen blank (9.5x2.4x0.8cm)
- 4x wood pen blank (10.4x2.4x0.8cm)
- 2x wood pen blank (12x2.4x0.8cm)
- 4x wood pen blank (19.2x2.4x0.8cm)

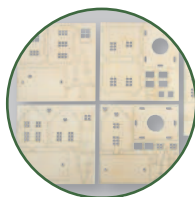




The mark of responsible forestry

DIY
Set

Exclusive
by Rayher



46 793 505 (4)

W.buil.kit Light-up house,FSC Mix

Credit

7-10cm,46-part,LED string light,box 1set
natural



- **Wooden building kit Illuminated houses** consisting of **two** different houses and **four** little fir trees
- The houses can be illuminated by inserting the included string of LED lights through the small hole
- Perfectly suited to the wooden building kit Illuminated Village (item no.46755505) and wooden building kit Illuminated Houses (item no.46756505) in order to create an atmospheric, luminous village

Contents:

Small house: 9.5×8×9cm

Big house: 9.5×8×10cm

Fir tree det: 2 pieces, 7.5×1.7×9.5cm each

2 strings of LED lights without batteries

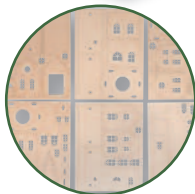




46 755 505 (4)

Wood kit Illuminat.hamlet,FSC Mix
Credit

7-19cm,84-pcs,LED string lights,box 1set
natural



- 3D wooden building kit "Lichterdorf" consisting of one church, two houses and three Christmas trees
- Can be topped up with the wooden building kit "Lichterhäuser" (item no.46 756 505)
- Suitably adapted to the wooden building kit "Häuschen" (item no.46 299 000) and "Häuschen 2" (item no.46 300 000)

Usage tips:

- The church and houses can be nicely illuminated with the three inlying LED strings of lights (included in extent of supply)

Contents:

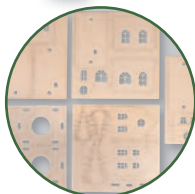
- 1 church (12.2×8×19cm)
- 1 large house (9.5×8×10cm)
- 1 small house (9.5×8×9.2cm)
- 3 Christmas trees (3.5×1.5×7cm + 5×1.5×9cm)
- 3 LED strings of lights (batteries not included)



46 756 505 (4)

Wood kit Light up houses, FSC Mix
Credit

7-10cm,48-pcs,LED string lights,box 1set
natural



- 3D wooden building kit "Lichterhäuser" consisting of two houses and three Christmas trees
- Can be topped up with the wooden building kit "Lichterdorf" (item no.46 755 505)
- Suitably adapted to the wooden building kit "Häuschen" (item no.46 299 000) and "Häuschen 2" (item no.46 300 000)

Usage tips:

- The houses can be nicely illuminated with the inlying LED string of lights (included in extent of supply)

Contents:

- 1 large house (9.5×8×10cm)
- 1 small house (9.5×8×9.2cm)
- 3 Christmas trees (3.5×1.5×7cm + 5×1.5×9cm)
- 2 LED strings of lights (batteries not included)





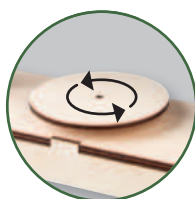
DIY
Set

Exclusive
by Rayher



63 157 505 (2)

W.kit 3D Alpine village, FSC Mix Credit
40x14.5x20cm, 94-part, +rotary plate, box
natural



Moving moments:

with our **unique 3D wooden construction kits** equipped with battery-powered **rotary plate!**

- **Guaranteed success:** quick and easy to make by yourself
- Intuitive user instructions
- Incl. felt cuttings for noiseless damping
- **Timer function** (6 hours "ON" – 18 hours "OFF")
- Battery compartment (2x AA batteries – batteries not included)

Application tips:

- House and church can be illuminated (e.g. with mini LED string lights – item no.69 259 159)
- Battery compartment of the string lights can be hidden in the base



63 158 505 (2)

3Dwood kit Winter village, FSC Mix
Credit
40x14.5x17cm, 84-part, box 1set
natural



- 3D construction kit "Winter village"
- Consisting of 3 different houses, fir trees as well as roe deers, deers and rabbits

Application tips:

- House and church can be illuminated (e.g. with mini LED string lights – item no.69 259 159)
- Battery compartment of the string lights can be hidden in the base



**DIY
Set**



46 299 000 (4)

Wood.build.kit Cottage x1, FSC 100%
17.5x9.4x14cm, 30-part, 1set

**Exclusive
by Rayher**



**DIY
Set**



46 300 000 (4)

Wood.build.kit Cottages x2, FSC 100%
31.7x9.4x14cm, 51-part, 1set

**Exclusive
by Rayher**



- 3D wooden construction kit "Cottages"
- Cottages, fir trees and garden fences are included
- Adapted to the 3D wooden kits "Alpine village" (item no.63 157 505) and "Winter village" (item no.63 158 505)

Application tips:

- Cottages can be illuminated (e.g. with the mini LED string of lights - item no.69 259 159)
- Battery compartment of the string of lights can be hidden in the base



69 228 159 (6)

Mini LED string of lights w.wire/timer
130cm, 20 LED lights, battery powered
light yellow

Total length: 130 cm (incl. the supply
line of 30 cm)



69 229 159 (6)

Mini LED string of lights w.wire/timer
235cm, 40 LED lights, battery powered
light yellow

Total length: 235 cm (incl. the supply
line of 30cm)



- **Light colour: warm-white**
- LED lights at 5cm space distance
- With cable return and extremely flexible cable
- Timer function (6 hours "light ON" - 18 hours "light OFF")
- Battery compartment (3x AA batteries, 1.5 V - batteries not included)

Application tip:

- Fairy lights are **perfect** for wrapping and illuminating **rings and hoops!**





62 696 000 (6)
wood frame Houses, FSC Mix Credit
14x10x4cm+12.5x8.5x4cm



62 695 000 (6)
wood frame Houses, FSC Mix Credit
17x9x4cm+15x7,5x4cm



62 689 000 (6)
Wooden tray, FSC 100%
45x13.5x2.3cm



62 688 000 (8)
Wooden tray, FSC 100%
29.5x10.3x2.3cm



62 839 505 (6)
Wooden frame to set, FSC Mix Credit
11.5x16x3.5cm, with double acryl.screen
natural






 
66 039 000 (8)
Deco firs, snow-covered
9+12cm assort., tab-bag 4pcs.




66 061 000 (8)
Deco-Snowy Fir tree
10cm, green, PVC box 4pcs




66 075 444 (6)
Decorative fir trees, snow-covered
5cm x 4 pcs/10cm x 3 pcs, box 7 pcs
fir green




66 059 000 (8)
Deco-Snowy Fir tree
5cm, green, PVC box 8pcs

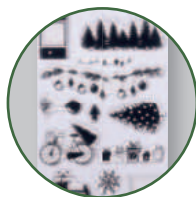



64 646 505 (8)
Wood Christmas tree, FSC 100%
5.1x5.1x16cm
natural




46 541 505 (6)
Wooden trees, 2.9cm ø
assorted 7.8-8.5cm height, box 3pcs
natural





50 294 000 (4)
Clear Stamps - "Coming Home"
97x205mm, 16 motifs, tab-bag 1sheet



50 276 000 (4)
Clear Stamps - "Welcome Home"
97x205mm, 23 motifs, tab-bag 1 sheet



50 295 000 (3)
Punch template Houses
5.8x8.6cm, 1-part, tab-bag



50 296 000 (3)
Punch template Rowhouse
12.1x4.5cm, 1-part, tab-bag



Punching stencils 100% steel – made in USA

- long-lasting and for versatile using
- with very fine details
- can be used with all common punching machines
- for paper, felt, fabric, foil, etc.





46 130 000 (8)
Wooden building kit Winter houses
31 parts, tab-bag 1pc



46 129 000 (8)
Wooden building kit Christmas church
37 parts, tab-bag 1pc



64 651 505 (6)
CK Wooden house, FSC 100%
11.5x3.5x11cm, 6-part, box 1set
natural



The mark of
responsible forestry



64 532 000 (8)
Wooden wall hooks House, FSC 100%
12.8cm, assorted, box 2pcs



The mark of
responsible forestry



46 712 000 (6)
Felt Christmas tree to stand upright
6x4x21cm
100% Polyester



67 240 000 (4)
Pap.craft kit Light vill.,FSC Mix
Credit
incl. adhesive tape, tab-bag 2sheets

**DIY
Set**



46 789 000 (8)
Wood house on clothes peg, FSC 100%
2.6/2.9x4.3cm, tab-bag 6pcs



46 769 000 (8)
Wood+felt shapes Home, FSC 100%
4.7-5.5cm, w. adhesive dot, tab-bag 9pcs



48 989 000 (1)
Dump bin display Houses

We reserve the right to make changes to the equipment and packaging designs.



46 764 000 (8)
Wooden shapes to scatter House, FSC 100%
2.6x3.9cm, w. adhes.dot, tab-bag 12pcs



46 711 000 (8)
Wood decorative shapes House
4.5-4.2cm, w. adh. dot, tab-bag 9pcs



From basic essentials

Must-haves for all craft fans

Basic craft products are essential for all creative work. As always, the new basic products are very varied. Our range includes out-of-season silicone casting moulds and, for the first time, impregnations and protective varnishes for Raysin! It is possible now to make self-cast items water-repellent and weather-resistant. This makes it much easier to carry out creative projects in Raysin, particularly for outdoor use.

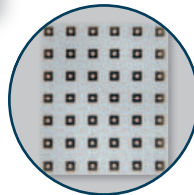
A long-lasting gloss on craft objects made by you? No problem at all – our innovative Nature-Glimmer or Nature-Glitter product is made from natural, microplastic-free substances that decompose in nature without leaving any trace behind.

With the new Rub-On transfer foils, you are offering your customers with a passion for handicrafts a simple way to apply different motifs to surfaces out of Raysin, wood, papier-mâché or standard paper in order to enhance their small works of art. Rub-on transfer foil motifs blend perfectly with each of the surfaces mentioned above.

Our range is complemented by adequate craft tools, new yarns with golden strands, felt fabrics and ribbons that offer plenty of possibilities for creative projects. Our materials are a source of inspiration for the creation of exceptional effects and for putting craft ideas into practice.



für · pour · for
42



36 195 000 (6)

Silicone mould Letter Beads

incl. numbers, 42 beads, 10x10mm



- **Casting mould** made of high-quality **silicone**
- Particularly elastic and resilient material
- **Reusable**
- Frost- and heat-resistant (from -40°C up to 230°C)
- Very easy to demould and dimensionally stable
- Ideal for casting with **creative-cement**, **creative-cement 5-in-1**, **Raysin**, casting resin

Size:

Bead hole: \varnothing 3.7mm





34 481 000 (6)

Clear varnish, extreme protection, matt
box 150ml

- Well-covering and adhering **acrylic clear varnish** with a special solvent
- Excellent grip to many materials: **Raysin** (plaster), **concrete**, **styrofoam**, **metal**, **wood**, **glass** (note: matt white finish appears on clear surfaces), **ceramics**, **stone**, **paper**, **card-board**
- Good flow properties, smooth surface finish
- Quick and even drying
- For both indoor and outdoor use
- Smudge-proof
- Weather-resistant, lightfast, UV-resistant
- Scratch-resistant, shock-resistant and impact-resistant

Tips for use:

- Remove any rust and dirt
- The surface must be clean, dry and grease-free
- Shake the can for about 3 minutes before use
- A small spray test and compatibility check with the varnish on an inconspicuous area are recommended
- Spray several thin coats from left to right at a distance of about 25 cm
- Do not spray on surfaces painted with synthetic resin!
- Dust-dry after about 10 min
- Touch-dry after about 30 min
- Completely dry after about 4 h
- Application temperature range: from 10 to 25°C



35 113 000 (4)

Impregnation for Raysin, concrete
clear, bottle 250 ml

Exclusive
by Rayher

- **Perfect water-based surface protection** for **Raysin** and **creative-cement**
- The **indiscernible impregnation** acts as a **water-repellent**/corrosion inhibitor and thus **protects** against conventional impurities, lime deposits, frost, weathering, colour loss, moss formation
- For both indoor and outdoor use
- Breathable
- Food-safe
- UV-resistant
- Thermal/heat stability after drying up to +350°C
- No microplastics, PFAS, PFOA/PFOS, SVHC-free (substance of very high concern)

Tips for use:

- The surface must be dry, absorbent, clean, frost-free and even
- Apply it richly with a paintbrush, paint roller or spray, 2 coats if necessary
- After application, keep the treated surface frost-free and let it dry for at least 24 hours
- Service life depends on many factors (e.g. exposure conditions, meteorological parameters, application, usage, cleaning methods, etc.) and is normally between 2 and 10 years
- If a reduction in the protective effect is noticed, we recommend cleaning the surface in question and applying a new coat
- Pre-tests are recommended
- Do not use at temperatures below +10°C
- Not suited to polished surfaces
- Conditionally suited to coated surfaces (painted, varnished, stamped, gilded, etc.) - please perform pre-tests





Exclusive
by Rayher

35 114 000 (4)

Intens, impregnation for Raysin, concrete
semi-gloss, bottle 250ml



- Perfect water-based surface protection for Raysin and creative-cement
- The high-performance impregnation with a slight silky lustre acts well as a water-repellent/oil repellent and thus protects against conventional impurities, lime deposits, frost, weathering, colour loss, moss formation
- For both indoor and outdoor use
- Subtle silk gloss and slightly colour-deepening optics
- Breathable
- Food-safe
- UV-resistant
- Thermal/heat stability after drying up to +150°C
- No microplastics, PFAS, PFOA/PFOS, SVHC-free (substance of very high concern)

Tips for use:

- The surface must be dry, absorbent, clean, frost-free and even
- Apply it richly with a paintbrush, paint roller or spray
- After application, keep the treated surface frost-free and let it dry for at least 24 hours
- Service life depends on many factors (e.g. exposure conditions, meteorological parameters, application, usage, cleaning methods, etc.) and is normally between 2 and 10 years
- If a reduction in the protective effect is noticed, we recommend cleaning the surface in question and applying a new coat
- Pre-tests are recommended
- Do not use at temperatures below +10°C
- Not suited to polished surfaces
- Conditionally suited to coated surfaces (painted, varnished, stamped, gilded, etc.) - please perform pre-tests



Exclusive
by Rayher

35 115 000 (4)

Protective coating for Raysin, concrete
semi-matt, bottle 250ml



- Perfect surface protection for Raysin and creative-cement
- The special coating based on natural microcrystalline waxes (water-based) with an almost invisible, slightly silky matt optics protects well against impurities
- Similar to the anti-graffiti finish: makes the surface water- and oil-repellent and thus protects it against conventional impurities, lime deposits, frost, weathering, colour loss, moss formation
- For both indoor and outdoor use
- Conditionally breathable
- Food-safe
- UV-resistant
- Thermal/heat stability after drying up to +60°C
- No microplastics, PFAS, PFOA/PFOS, SVHC-free (substance of very high concern)
- Ideal to use in combination with the previous impregnation

Tips for use:

- The surface must be dry, absorbent, clean, frost-free and even
- Apply it richly with a paintbrush, paint roller or spray
- After application, keep the treated surface frost-free and let it dry for at least 24 hours
- Service life depends on many factors (e.g. exposure conditions, meteorological parameters, application, usage, cleaning methods, etc.) and is normally between 2 and 10 years
- If a reduction in the protective effect is noticed, we recommend cleaning the surface in question and applying a new coat
- Pre-tests are recommended
- Do not use at temperatures below +10°C
- Not suited to polished surfaces
- Conditionally suited to coated surfaces (painted, varnished, stamped, gilded, etc.) - please perform pre-tests





0,1 – 3 mm



39 591 606 (6)

Nature Glimmer Flakes, fine,eco-friendly
0.1-3mm, box 370ml
silver



0,1 – 3 mm



39 591 616 (6)

Nature Glimmer Flakes, fine,eco-friendly
0.1-3mm, box 370ml
gold



0,1 – 3 mm



39 591 990 (6)

Nature Glimmer Flakes, fine,eco-friendly
0.1-3mm, box 370ml
rainbow



0,1 – 3 mm



39 591 999 (6)

Nature Glimmer Flakes, fine,eco-friendly
0.1-3mm, box 370ml
coloured



3 – 10 mm



39 592 606 (6)

Nature Glimmer Flakes,coarse,
eco-friend.
3-10mm, box 370ml
silver



3 – 10 mm



39 592 616 (6)

Nature Glimmer Flakes,coarse,
eco-friend.
3-10mm, box 370ml
gold



3 – 10 mm



39 592 990 (6)

Nature Glimmer Flakes,coarse,
eco-friend.
3-10mm, box 370ml
rainbow



3 – 10 mm



39 592 999 (6)

Nature Glimmer Flakes,coarse,
eco-friend.
3-10mm, box 370ml
coloured

- Decorative **glimmering flakes** out of 100% **natural material** (layered silicate) that biodegrades in nature **without leaving residues**
- The golden version is heat-treated and baked to provide its naturally beautiful golden colour shade
- Complies with EC Regulation (EC) 2023/2055

Tips for use:

- To scatter e.g. on bowls, plant pots or lanterns
- Great for combination with other materials
- Also great to be cast with Raysin or concrete
- Particular glimmering effects can be obtained by sanding
- Can be stuck on paper, papier-mâché or wood using the glittered glue



39 594 862 (8)

Bio-Glitter colour assortment

6 colours, 2g of each, tab-box 12g
gold, silver, black, white



39 594 990 (8)

Bio-Glitter colour assortment

6 colours, 2g of each, tab-box 12g
rainbow



39 594 999 (8)

Bio-Glitter colour assortment

6 colours, 2g of each, tab-box 12g
coloured



- **Bio Glitter set**
- Consists of **naturally derived raw materials** that are quickly and entirely biodegradable
- Based on cellulose, which is obtained from deciduous wood (preferably eucalyptus)
- Complies with EC Regulation 2023/2055

Tip for use:

- Scatter it onto glitter-glue or double-sided adhesive tape



39 588 (8)
Bio-Glitter Eco friendly, fine
 small bottle 7g
 See colour choice

Colour choice
39 588..



610
 brilliant
 silver



616
 gold



620
 brilliant gold



861
 silver shadow



39 593 000 (1)
Display Bioglitter
 18 items, 8 vials per each + accessories

- **Eco-friendly bio-glitter** available in different versions and colours
- Supplied in a handy **table display** fitted with accessories for gluing

Contents:

- 8x Bio-Glitter Eco friendly, fine (4 colours)
- 8x Bio-Glitter Eco friendly, ultra-fine (7 colours)
- 8x Bio-Glitter pastel Eco friendly, fine (7 colours)
- 5x Glue Pen, 4-6mm chisel tip
- 12x glue pen Quickie Glue
- 8x glittered glue, bottle 25g



39 589 (8)
Bio-Glitter Eco friendly, ultra-fine
 small bottle 7g
 See colour choice

Colour choice
39 589..



267
 hot-pink



287
 classic red



374
 azure



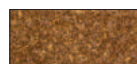
428
 leaf green



610
 brilliant
 silver



616
 gold

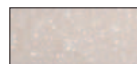


620
 brilliant gold



39 590 (8)
Bio-Glitter pastel Eco friendly, fine
 small bottle 7g
 See colour choice

Colour choice
39 590..



105
 alabaster
 white



256
 pastel pink



258
 pale-pink



356
 light blue



502
 eucalyptus



520
 cashmere



638
 copper





33 610 00 (8)
Glitter Glue
Bottle 25 g



30 234 000 (6)
Glitter glue
liner 100ml, bottle 106g



Acid free



33 086 00 (12)
Quickie glue



30 235 000 (10)
Glue Pen, 4-6mm, wedge tip
tab-blister 1pc



30 236 000 (10)
Glue Pen, 1-1.5mm, round tip
tab-blister 1pc



Acid free



30 070 000 (6)
Double-sided adhesive tape extra strong
3mm, transparent, t-bag 10m



Acid free



30 202 000 (6)
Doublesided adh. tape extra strong
9mm, transparent, tab-bag 10m



Acid free



30 203 000 (6)
Double-sided adh. tape extra strong
12mm, transparent, tab-bag 10m



34 482 701 (12)
Glimmer spray
plastic-free, water-based, spray can 150ml
frost



34 482 616 (12)
Glimmer spray
plastic-free, water-based, spray can 150ml
gold



34 482 606 (12)
Glimmer spray
plastic-free, water-based, spray can 150ml
silver



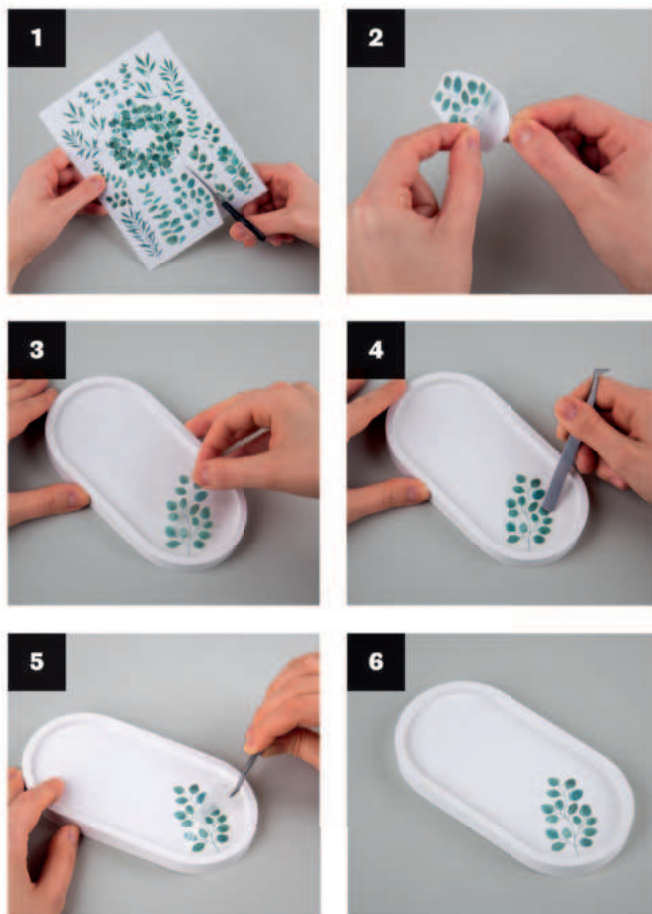
46 829 000 (8)

Transfer "Rub on" Botanical Flowers
various designs, tab-bag 3sheets

- "Rub on" transfer with various eucalyptus, leaf and floral motifs
- Suitable for designing items out of Raysin, wood, papier-mâché and paper
- Not suitable for candles
- Not food-safe

Tips for use:

- Cut out the desired motif and remove the lower backing paper
- Lay the motif with the slightly sticky side down on a clean, dry surface and rub carefully with a blunt object (for example tweezers art. no. 8920600) until the backing paper comes off
- Remove the backing paper
- Motif then bonds to the surface





46 830 000 (8)

Transfer "Rub on" Flower Cat Home
various designs, tab-bag 3sheets

- "Rub on" transfer with various house, cat and floral motifs



46 831 000 (8)

Transfer "Rub on" X-Mas
various designs, tab-bag 3sheets

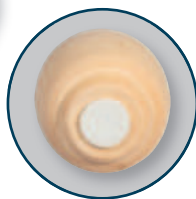
- "Rub on" transfer X-Mas with various Christmas motifs and texts





46 686 505 (12)

Wooden decorative vase, mini
4.8-6.4cm, sorted, PVC box, 3 pcs
natural



- Mini wooden vases available in three different shapes and sizes
- Made from **solid turned wood**
- Decorative vases for dried flowers, blossoms and grass

Dimensions:

ø 3.3 × 4.8cm

ø 3.3 × 5.4cm

ø 3.6 × 6.4cm



62 817 000 (4)

Wood.frame w. rear wall, FSC Mix Credit
36x25x5cm,+cord, hanger, clamps



The mark of
responsible forestry



71 736 000 (5)
Papier-mâché
box FSC Recyc-
led 100%
9x9x3.5cm,
heart-shaped



The mark of
responsible forestry



46 056 000 (18)
Glass vessel w.metal-screw
lid, 3cm ø
8cm, 37ml, aperture ø2cm



62 846 505 (10)
Wooden pendant Tag, FSC 100%
4.5x8x0.3cm, tab-bag 6pcs
natural

Exclusive
by Rayher



The mark of
responsible forestry



27 003 000 (2)

Styrofoam thermocutter, 3in1

3 diff.tips, box 1set

- **3in1 hot knife cutter for Styrofoam**
- **3 tips** for a broad range of application possibilities: **Y-shaped cutting tip / wire tip** (for easy cutting of shapes, ready-for-use), **long cutting tip** (for cutting internal shapes, one minute pre-heating time only), **engraving tip** (engraving of contours, one minute pre-heating time only)
- Adjustable handle for optimum working angle
- Fast heat-up
- Indicator light (illuminated during operation)

Contents:

Hot knife cutter
USB charging cable (USB-type A) - USB charger not included
3 tips for various application possibilities
Stand for putting the hot appliance down
2 spare wires for the Y-shaped tip





44 008 999 (4)

Cotton yarn mix

Mini skein of 20g, assorted, box 12pcs
coloured
100% Cotton



44 008 685 (4)

Cotton yarn mix

Mini skein of 20g, assorted, box 12pcs
pastel
100% Cotton

- Soft and pleasant to touch
- Easy to work with.
- Length per 20g = about 48m





42 010 504 (6)

Braidy Recycling yarn, braided, 4mm ø
approx. 60m, ball of yarn 250g
sand



42 009 504 (6)

Braidy recycling yarn, braided, 2mm ø
approx. 250m, ball 250g
sand

- **Recycled yarn:** min. 70% cotton, max. 30% polyester
- Great for crocheting and knitting modern accessories and home decorations, as well as for macramé and all contemporary knotting techniques
- Stitch pattern 10×10cm: 8 stitches/8 rows
- Knitting area: approx. 27×27cm
- Knitting needle size: 8-12mm
- Crochet hook size: 8-10mm

- **Recycled yarn:** 70% cotton, 30% polyester
- Great for crocheting and knitting modern accessories and home decorations, as well as for macramé and all contemporary knotting techniques
- Stitch pattern 10×10cm: 16 stitches/16 rows
- Knitting area: approx. 45×45 cm
- Knitting needle size: 2-6mm
- Crochet hook size: 2-4mm





42 013 504 (6)

Braidy Recycling yarn w. gold thread, 2mm

braided, approx. 240m, ball 250g sand



42 013 503 (6)

Braidy Recycling yarn w. gold thread, 2mm

braided, approx. 240m, ball 250g reed



42 013 104 (6)

Braidy Recycling yarn w. gold thread, 2mm

braided, approx. 240m, ball 250g ivory

- **Recycled yarn:** 67% cotton, 33% polyester (including 5% golden threads)
- Great for crocheting and knitting modern accessories and home decorations, as well as for macramé and all contemporary knotting techniques
- Stitch pattern 10x10cm: 15 stitches/15 rows
- Knitting area: approx. 45x45 cm
- Knitting needle size: 2-6mm
- Crochet hook size: 2-4mm





42 014 504 (6)

Braidy Recycling yarn w. gold thread, 4mm

braided, approx. 58m, ball 250g sand



42 014 503 (6)

Braidy Recycling yarn w. gold thread, 4mm

braided, approx. 58m, ball 250g reed



42 014 104 (6)

Braidy Recycling yarn w. gold thread, 4mm

braided, approx. 58m, ball 250g ivory

- **Recycled yarn:** 67% cotton, 33% polyester (including 5% golden threads)
- Great for crocheting and knitting modern accessories and home decorations, as well as for macramé and all contemporary knotting techniques
- Stitch pattern 10x10cm: 7 stitches/7 rows
- Knitting area: approx. 27x27 cm
- Knitting needle size: 8-12mm
- Crochet hook size: 8-10mm



21 075 00 (5)

Crochet hook

sizes 2,8mm/2,4mm/1,8mm, tab-bag 3 pcs.



42 012 505 (8)

Bamboo crochet hook, 4, 6, 8, 10mm Ø

length 15cm, tab-bag 4pcs natural

- Crochet hooks made of bamboo in the following sizes: 4, 6, 8 and 10
- Tailored to the different thicknesses of the Braidy Recycling yarn (items no. 42 009, 42 010 + 42 011)





 
55 965 210 (8)
Ribbon + cord set
 Ribbon 1cm, cord 1mmø,
 3x3m,tab-bag 9m
 orange



 
55 965 287 (8)
Ribbon + cord set
 Ribbon 1cm, cord 1mmø,
 3x3m,tab-bag 9m
 classic red



 
55 965 308 (8)
Ribbon + cord set
 Ribbon 1cm, cord 1mmø,
 3x3m,tab-bag 9m
 lilac



 
55 965 520 (8)
Ribbon + cord set
 Ribbon 1cm, cord 1mmø,
 3x3m,tab-bag 9m
 cashmere



 
55 965 561 (8)
Ribbon + cord set
 Ribbon 1cm, cord 1mmø,
 3x3m,tab-bag 9m
 silver grey



 
55 965 616 (8)
Ribbon + cord set
 Ribbon 1cm, cord 1mmø,
 3x3m,tab-bag 9m
 gold



 
55 965 102 (8)
Ribbon + cord set
 Ribbon 1cm, cord 1mmø,
 3x3m,tab-bag 9m
 white



 
55 965 161 (8)
Ribbon + cord set
 Ribbon 1cm, cord 1mmø,
 3x3m,tab-bag 9m
 sun yellow



 
55 965 258 (8)
Ribbon + cord set
 Ribbon 1cm, cord 1mmø,
 3x3m,tab-bag 9m
 pale-pink



 
55 965 356 (8)
Ribbon + cord set
 Ribbon 1cm, cord 1mmø,
 3x3m,tab-bag 9m
 light blue

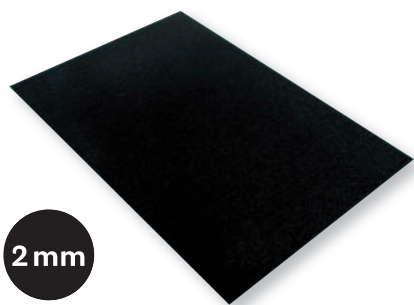


 
55 965 412 (8)
Ribbon + cord set
 Ribbon 1cm, cord 1mmø,
 3x3m,tab-bag 9m
 May-green

Material specifications:

Ribbons: 100% paper
 Cord: 100% polyester

55 965 287
 100% polyester

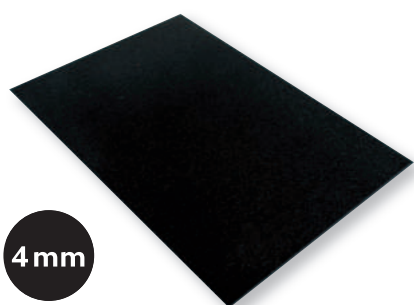


2 mm

53 354 (5)
Textile felt
30x45x0.2cm
See colour choice
100% Polyester

**Colour choice
53 354..**



					
02 white	20 yellow	30 maize	34 orange	16 pale-pink	33 pink
					
18 red	17 light red	19 wine-red	35 lilac	77 lavender	08 light blue
					
10 dark blue	12 blue green	11 light green	29 green	84 antique green	13 dark green
					
14 olive	03 beige	51 taupe	96 cream	04 medium brown	05 dark brown
					
25 grey	01 black				



4 mm

53 119 (5)
Textile felt
30x45x0.4cm
See colour choice
100% Polyester

**Colour choice
53 119 ..**

					
02 white	20 yellow	30 maize	34 orange	16 pale-pink	33 pink
					
18 red	17 light red	19 wine-red	35 lilac	77 lavender	08 light blue
					
10 dark blue	12 blue green	11 light green	29 green	84 antique green	13 dark green
					
14 olive	03 beige	51 taupe	96 cream	04 medium brown	05 dark brown
					
25 grey	01 black				



From infinite combination possibilities

Click, Mix & Match

Our new Mix & Match jewellery-making collection offers plenty of scope for creating individual pieces of jewellery that faithfully reflect your customers' personal style. The elegant link chains form the basis of many trendy necklaces and bracelets. Thanks to the well-thought-out system of lobster clasps, bead strings of different colours and materials can be quickly attached or replaced. Every colour, every style – everything can be combined to create a piece of jewellery that perfectly expresses the customer's image.

Our broad range of charms gives your customers the opportunity to enhance further their self-made pieces of jewellery. Whether it's about playful, trendy, elegant or minimalist design, there are no limits set to your customers' creativity. They can play with new jewellery designs to suit their outfit or mood.

The easy handling allows a variety of uses for jewellery: by hanging it on a bag, by wearing as it is or by replacing its decorative elements. Thus, Mix & Match has become synonymous with creative expression and contemporary jewellery design.

Mix & Match is much more than a jewellery-making collection, it's a tool for self-expression and individual design. With Mix & Match, every day becomes a new creative adventure – and your customers become designers of their own jewellery!



CREATIVE

Jewellery making for beginners & professionals

The innovative lobster clasp system from the Mix & Match collection lets you quickly attach and replace different jewellery elements. This makes it quick and easy to change the look of the jewellery, without investing a lot of time

and without considerable manual skills. The fact that you can easily transform the pieces of jewellery stimulates creativity and encourages you to try out different combinations – as you see fit.

INDIVIDUAL

An infinite number of combinations

By combining different jewellery elements, such as link chains, bead strings or charms, it's possible to create unique pieces of jewellery, fully tailored to personal

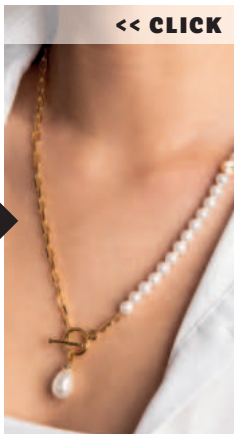
preferences. This flexibility in design allows you to change the jewellery in order to suit the occasion or mood, giving it a uniqueness that really makes a difference.

VARIETY

With full guarantee

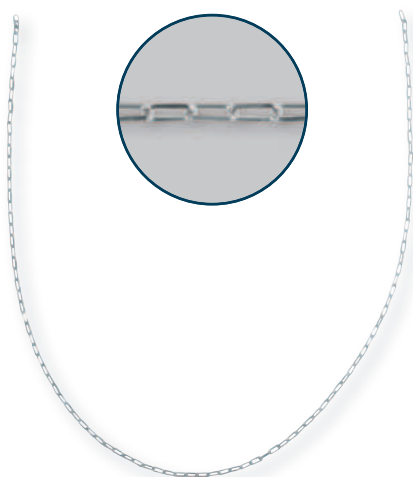
With Mix & Match, you don't just get one piece of jewellery, you get a whole collection that is as colourful and unique as the person wearing it. Every jewellery lover has the opportunity to express their personality and style through

individually crafted jewellery combinations. So jewellery is not just a fashion accessory, but also an expression of the wearer's personality and lifestyle.





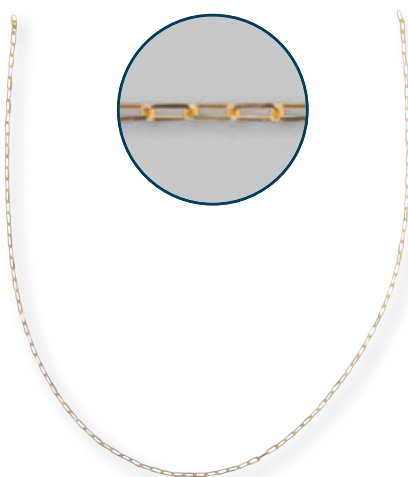




22 895 606 (8)

Link chain Paperclip

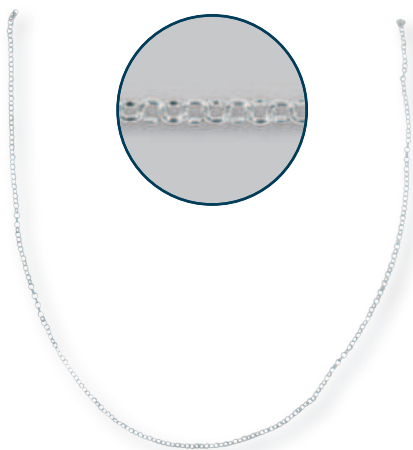
0.8x3x7mm, 80cm long, tab-bag 1pc
silver



22 895 616 (8)

Link chain Paperclip

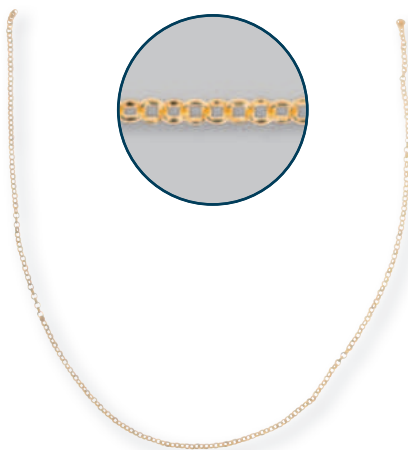
0.8x3x7mm, 80cm long, tab-bag 1pc
gold



22 957 606 (10)

Link chain Rings

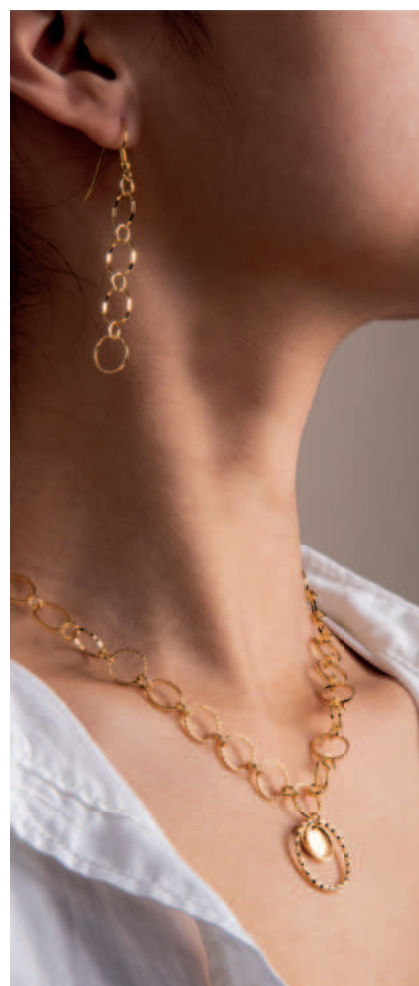
ø ring 4mm, 80cm long, tab-bag 1pc
silver



22 957 616 (10)

Link chain Rings

ø ring 4mm, 80cm long, tab-bag 1pc
gold



22 958 606 (8)

Link chain Embossed rings

ø ring 10+4mm, 80cm long, tab-bag 1pc
silver



22 958 616 (8)

Link chain Embossed rings

ø ring 10+4mm, 80cm long, tab-bag 1pc
gold



22 959 606 (10)

Link chain Paperclip

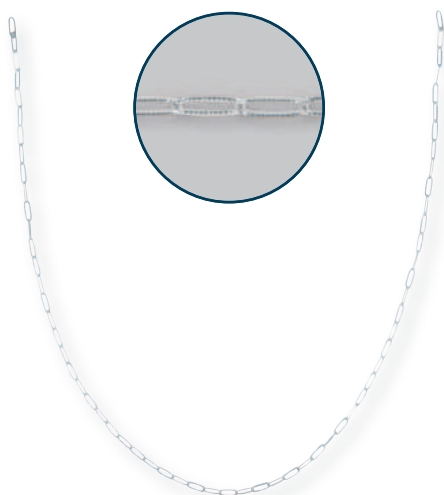
1.5x17x6.5mm, 80cm long, tab-bag 1pc
silver



22 959 616 (10)

Link chain Paperclip

1.5x17x6.5mm, 80cm long, tab-bag 1pc
gold



22 960 606 (8)

Link chain Embossed paperclip

1.2x5.4x15mm, 80cm long, tab-bag 1pc
silver



22 960 616 (8)


Link chain Embossed paperclip

1.2x5.4x15mm, 80cm long, tab-bag 1pc
gold



 22 973 606 (10)
Lobster claw clasp
9.2x3.4mm, tab-bag 2pcs
silver



 22 973 616 (10)
Lobster claw clasp
9.2x3.4mm, tab-bag 2pcs
gold



 22 974 606 (10)
Jewellery clasp oval
13.5x7mm, tab-bag 1pc
silver



 22 974 616 (10)
Jewellery clasp oval
13.5x7mm, tab-bag 1pc
gold




 22 975 606 (10)
Toggle clasp, filigree, 14mm ø
tab-bag 1pc
silver




 22 975 616 (10)
Toggle clasp, filigree, 14mm ø
tab-bag 1pc
gold




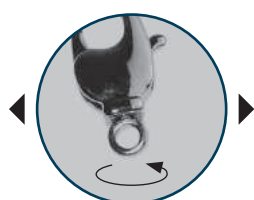
 22 194 22 (10)
Carabiner clasp with ring
9.5mm, tab-bag 2pcs.
silver




 22 194 06 (10)
Carabiner clasp with ring
9.5mm, tab-bag 2pcs.
gold



 22 192 22 (10)
Carabiner clasp with rotating eye
7.3x14mm, tab-bag 2pcs.
silver



 22 192 06 (10)
Carabiner clasp with rotating eye
7.3x14mm, tab-bag 2pcs.
gold





22 962 606 (10)
Metal charms Heart + double heart
 11x16+10x18mm, ring 5mm,
 tab-bag 2pcs
 silver



22 962 616 (10)
Metal charms Heart + double heart
 11x16+10x18mm, ring 5mm,
 tab-bag 2pcs
 gold



22 963 606 (10)
Metal beads Heart
 3 beads, each of 6+7mm, tab-bag 6pcs
 silver



22 963 616 (10)
Metal beads Heart
 3 beads, each of 6+7mm, tab-bag 6pcs
 gold



22 964 606 (10)
Metal beads Crown
 5mm, tab-bag 6pcs
 silver



22 964 616 (10)
Metal beads Crown
 5mm, tab-bag 6pcs
 gold



22 965 606 (10)
Metal beads, round, polished
 6mm, tab-bag 6pcs
 silver



22 965 616 (10)
Metal beads, round, polished
 6mm, tab-bag 6pcs
 gold



22 966 616 (10)
Drops Charm
 6x8+6x12+8x16mm+10x14mm, tab-bag
 4pcs
 gold



22 966 606 (10)
Drops Charm
 6x8+6x12+8x16mm+10x14mm, tab-bag
 4pcs
 silver





 
22 967 606 (10)
 Flat metal ring 10mm
 tab-bag 10pcs
 silver



 
22 967 616 (10)
 Flat metal ring 10mm
 tab-bag 10pcs
 gold



 
22 968 606 (10)
 Twisted metal ring 20mm
 tab-bag 6pcs
 silver



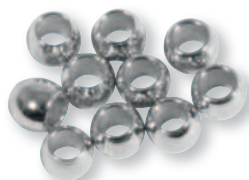
 
22 968 616 (10)
 Twisted metal ring 20mm
 tab-bag 6pcs
 gold





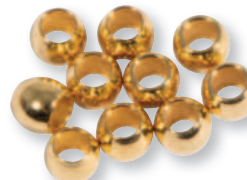
 
22 969 606 (10)
 Metal spacer bead, 5mm Ø
 tab-bag 6pcs
 silver





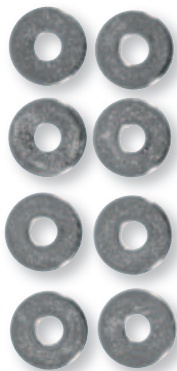
 
22 969 616 (10)
 Metal spacer bead, 5mm Ø
 tab-bag 6pcs
 gold



 
22 970 606 (10)
 Metal spacer bead, 3x2.5mm
 Ø
 tab-bag 10pcs
 silver



 
22 970 616 (10)
 Metal spacer bead, 3x2.5mm
 Ø
 tab-bag 10pcs
 gold



 
22 971 606 (10)
 Metal disc spacer bead,
 6x1mm Ø
 tab-bag 8pcs
 silver



 
22 971 616 (10)
 Metal disc spacer bead,
 6x1mm Ø
 tab-bag 8pcs
 gold



 
22 972 606 (10)
 Metal disc spacer bead,
 4x1mm Ø
 tab-bag 10pcs
 silver



 
22 972 616 (10)
 Metal disc spacer bead,
 4x1mm Ø
 tab-bag 10pcs
 gold



22 334 21 (10)
Ring, oval, 0.8mm ø
7.7x5.3mm, t-bag 22pcs.
platinum



22 334 06 (10)
Ring, oval, 0.8mm ø
7.7x5.3mm, t-bag 22pcs.
gold



22 382 06 (10)
Ring, round, 4.6mm ø
1mm, t-bag 30pcs.
gold



22 315 22 (10)
Ring, 4.6mm ø
1mm, tab-bag 20 pcs.
silver



22 253 21 (10)
Crimp bead
l: 1.4mm ø, O: 2mm ø, t-bag
35Stück
platinum



22 253 06 (10)
Crimp bead
l: 1.4mm ø, O: 2mm ø, t-bag
35Stück
gold



21 042 21 (10)
Chain stitch pin, 0.7mm ø
50mm, tab-bag
platinum, 50pcs.



21 042 06 (10)
Chain stitch pin, 0.7mm ø
50mm, tab-bag
gold, 50pcs.



22 270 21 (10)
Straight pin, 0.6mm ø
35mm, tab-bag 15pcs.
platinum



22 270 06 (10)
Straight pin, 0.6mm ø
35mm, tab-bag 15pcs.
gold



14 400 100 (10)
Renaissance glass wax beads,
4mm ø
box 85pcs
snowwhite



14 401 100 (10)
Renaissance glass wax beads,
6mm ø
box 45pcs
snowwhite



14 402 100 (10)
Renaissance glass wax beads,
8mm ø
box 25pcs
snowwhite



14 408 100 (10)
Renaissance olive
9x6 mm, box 20 pc
snowwhite





15 411 606 (4)

CK Mobile phone chain Click & Match
can also be worn as necklace or bracelet
silver



15 411 616 (4)

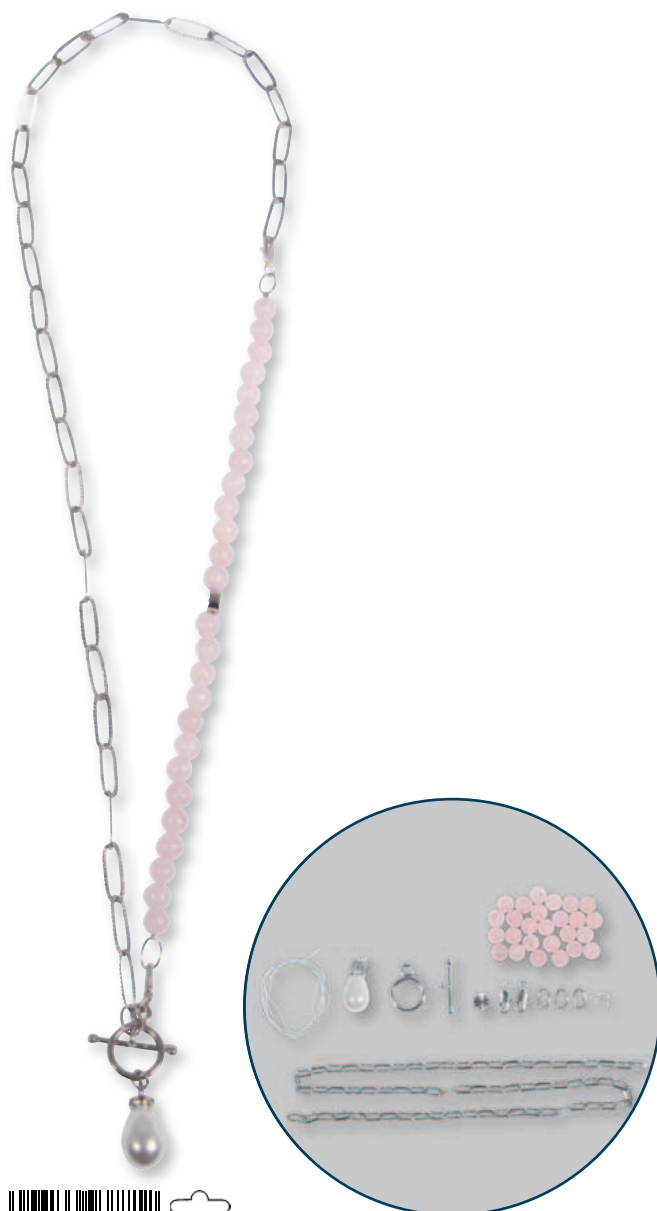
CK Mobile phone chain Click & Match
can also be worn as necklace or bracelet
gold



- **DIY-mobile phone chain set Click & Match** for designing an **individual mobile phone chain**
- Practical and stylish mobile phone chain made from link chains, Rocailles beads and glass wax beads
- Can also be worn as a necklace or bracelet
- **Click, Mix & Match-principle:** the jewellery chains can be combined individually thanks to their plain lobster clasp
- Universal, transparent, wafer-thin yet sturdy patch ensuring that the phone stays securely attached to the case

Contents:

- 1 link chain Paperclip, 80 cm
- 1 embossed link chain Paperclip, 50 cm
- 8 Renaissance glass wax beads, snow-white, ø 8mm
- 20 Rocailles beads, 2mm
- Natural threading silk, 2m
- 4 crimp beads
- 2 lobster clasps with ring
- 3 lobster clasps with swivel eyelet
- 1 mobile phone chain patch
- Instructions



15 412 606 (5)

CK Necklace Click & Match

2in1: chain+bracel., w. semiprecious stone
silver

• **DIY chain set Click & Match** for designing individual pieces of jewellery

- Trendy Paperclip link chain combined with elegant rose quartz semi-precious stones and refined touches
- Can also be worn as a necklace without beads or bracelet
- **Click, Mix & Match principle:** the jewellery chains can be combined individually thanks to their plain lobster clasp

Contents:

- 1 Paperclip link chain, embossed, 40 cm
- 26 semi-precious gemstone beads, rose quartz
- 1 metallic bead, ground round
- 1 drop Charm
- 2 lobster clasps
- 1 toggle clasp
- 3 rings, oval
- Stringing yarn, 60 cm
- 4 crimp beads





15 413 616 (5)

CK Necklace Click & Match

2in1: chain+bracelet, with glass beads
gold



- DIY chain set **Click & Match** for designing individual pieces of jewellery
- Trendy Paperclip link chain combined with high-quality glass beads and refined touches
- Can also be worn as a necklace without beads or bracelet
- **Click, Mix & Match principle:** the jewellery chains can be combined individually thanks to their plain lobster clasp
- Can be combined with DIY Green Dongling Jade bracelet set (item no.15414000)

Contenu:

- 1 Paperclip link chain, embossed, 40 cm
- 26 Renaissance glass wax beads, ø 6mm
- 1 metallic bead, ground round
- 1 drop Charm
- 2 lobster clasps
- 1 toggle clasp, filigree
- 3 rings
- Stringing yarn, 60 cm
- 4 crimp beads



15 414 000 (5)

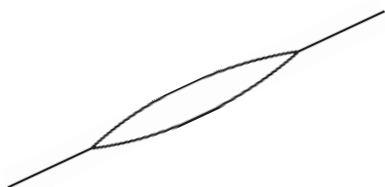
CK bracelet, green, dongling jade

- **DIY bracelet set** for designing **individual pieces of jewelry**
- The elegant semi-precious jade beads and gold-effect beads can be combined and strung in various ways
- Can be combined with DIY Click & Match chain set (item no.15413616)

Contents:

- 24 semi-precious beads „green Dongling Jade“, ø 6mm
- 1 metallic bead Heart
- 2 metallic spacer beads, ø 5mm
- 2 lobster clasps
- 3 rings, round
- Stringing yarn, 60 cm
- 4 crimp beads

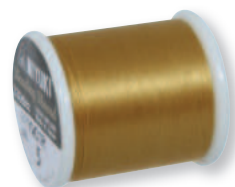




21 158 00 (5)
Spec.needle to thread beads, 11,4 cm
tab-bag 1 pce.



89 300 100 (5)
Threading yarn for Delica-Rocailles
0,27 mm, reel 50 m, tab-bag 1 reel
snowwhite
100% Nylon



89 300 616 (5)
Threading yarn for Delica-Rocailles
0,27 mm, reel 50 m, tab-bag 1 reel
gold
100% Nylon



33 397 00 (10)
Glue for jewellery
tube 27 g



89 541 00 (3)
Flat round pliers for jewellery
13,5 cm, 1 pc on blister card

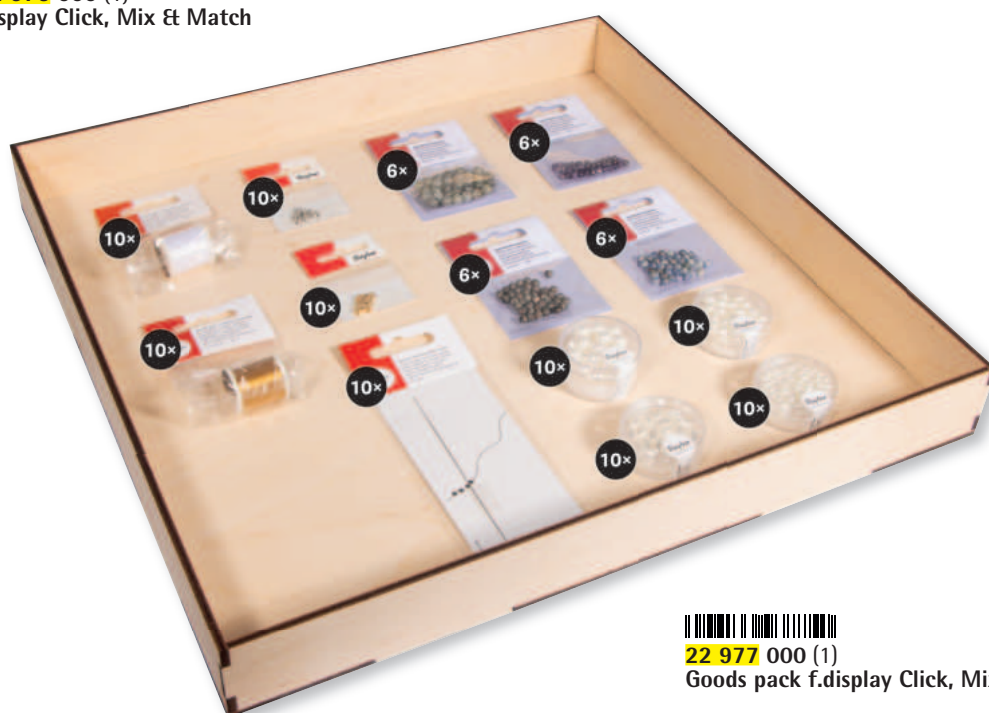


89 542 00 (3)
Pliers for jewellery
14 cm, 1 pc on blister card





22 976 000 (1)
Display Click, Mix & Match



22 977 000 (1)
Goods pack f.display Click, Mix & Match

From refined jewellery & jewellery sets

Must-haves for jewellery fans

Jewellery lovers will find with us an almost limitless selection of must-have items for making their very own pieces of jewellery. Semi-precious gems and refined glass bead mixes are the most sought-after when it comes to making shiny pieces of jewellery that are both elegant and unique. Our vast array not only offers a broad range of colours and textures, but also the opportunity to add a personal touch.

Our colourful bead mixes, supplied in various DIY kits, are particularly popular with young jewellery designers. Each of these children's kits contains everything they need to make colour-assorted bracelets, necklaces or pendants. The wide choice of motifs and lettering further enriches the creative process, allowing your customers to tell their own stories and express their emotions through jewellery.

The combination of different beads and matching materials is a source of inspiration for many jewellery creations. From refined pieces for everyday life to eye-catching accessories for important events, the diversity of products on offer leaves nothing to be desired. This selection of top-quality craft materials not only stimulates creativity, but also its application.



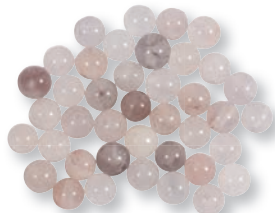
- A **precious gemstone** is generally defined as a piece of **mineral crystal** cut and polished characterised by various aspects such as exceptional rarity, hardness, colour and action of light
- The difference between **precious and semi-precious gemstones** lies mainly in the **rarity, hardness and commercial value**



17 110 000 (6)

Semi-precious gemstone bead African jade

ø 4mm, tab-bag 40pcs



17 111 000 (6)

Semi-precious gemstone beads Purple jade

ø 4mm, tab-bag 40pcs



17 112 000 (6)

Semi-precious gemstone beads Fire agate

ø 4mm, tab-bag 40pcs

- **African jade** (translucent green diopside-quartzite): a green gemstone found mainly in South Africa
- Despite its name, it is not really a jade, but rather a green grossular garnet (diopside-quartzite)

- **Lavender jade:** Jade is an umbrella term for two gemstones with distinctly different mineral compositions: nephrite and jadeite
- Jadeite comes in a wide range of colours, from white to pale green, emerald green and, in some cases, more or less purplish blue (lavender jade)

- **Natural fire agate:** Agates are colourful and multicoloured gemstones
- Many types of agate get their name from their colour and banding patterns



17 113 000 (6)

Semi-precious gemstone beads Blue quartz

ø 4mm, tab-bag 40pcs



17 114 000 (6)

Semi-prec.gemstone bead Rhodonite facet.

ø 4mm, tab-bag 40pcs



17 115 000 (6)

Semi-prec.gemstone beads Amethyst facet.

ø 4mm, tab-bag 40pcs

- **Blue quartz** (also known as dumortierite quartz or blue aventurine): Quartz, which gets its blue colour due to inclusions of fibrous crocidolite and to exsolution of rutile

- **Rhodonite:** known for its distinctive rosy to red colour and attractive patterns
- It is a silicate of manganese-iron-calcium, a mineral of the Pyroxene group
- Rhodonite derives its name from the Greek word „rhodon“, meaning rose

- **Amethyst** is a violet variety of quartz
- A glass-like luster of amethyst can be very intense in transparent, translucent and opaque varieties



17 116 000 (6)

Semi-precious gemstone beads Labradorite

Ø 6mm, tab-bag 30pcs

- **Labradorit** was never its own mineral, it is a mixture of Albite and Anorthite
- The particular allure of this gemstone is its play-of-colour
- This gemstone is known for its mesmerizing iridescence that shimmers and changes as the stone is viewed from different angles, and this particular feature sets it apart from other gemstones



17 117 000 (6)

Semi-precious gemstone bead White quartz

Ø 6mm, tab-bag 30pcs

- **White quartz crystal:** The representative of the quartz group
- It is considered the most colourful mineral
- There are quartz crystals that are crystal clear, white, pink and violet, but there are also yellow, brown and green quartz crystals

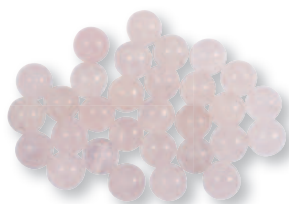


17 118 000 (6)

Semi-precious gemstone beads Amethyst

Ø 6mm, tab-bag 30pcs

- **Amethyst:** a violet variety of quartz crystals
- A glass-like luster of amethyst can be very intense in transparent, translucent and opaque varieties



17 119 000 (6)

Semi-precious gemstone beads Rose quartz

Ø 6mm, tab-bag 30pcs

- **Rose quartz:** Variety of mineral quartz
- It is a type of quartz that exhibits a soft pink to deeper rosy-red colour, sometimes with white or milky patches



17 120 000 (6)

Semi-prec.gemstones Green dongling jade

Ø 6mm, tab-bag 30pcs

- **Dongling Jade:** Mineral mixture mainly composed of jadeite and the mineral nephrite
- Green dongling jade originated in China, where it has a special significance




17 121 000 (6)

Semi-precious gemstone beads Cordierite

Ø 6mm, tab-bag 30pcs

- **Cordierite** (also known as dichroite or iolite): The blue colour of cordierite is due to the increasing iron content
- Low iron content results in lighter shades of blue, while high iron content results in dark shades of blue





 
14 877 102 (5)
 Glass earl effect beads mix
 tab-blisterbox 100g
 white





 
14 877 162 (5)
 Glass earl effect beads mix
 tab-blisterbox 100g
 golden yellow



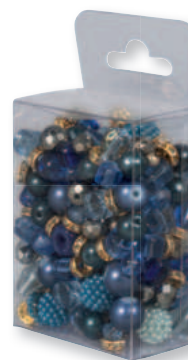
 
14 877 264 (5)
 Glass earl effect beads mix
 tab-blisterbox 100g
 pink


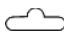


 
14 877 295 (5)
 Glass earl effect beads mix
 tab-blisterbox 100g
 royal red





 
14 877 314 (5)
 Glass earl effect beads mix
 tab-blisterbox 100g
 violet



 
14 877 376 (5)
 Glass earl effect beads mix
 tab-blisterbox 100g
 royal blue



 
14 877 392 (5)
 Glass earl effect beads mix
 tab-blisterbox 100g
 Indian turquoise



 
14 877 429 (5)
 Glass earl effect beads mix
 tab-blisterbox 100g
 emerald



 
14 877 434 (5)
 Glass earl effect beads mix
 tab-blisterbox 100g
 fern



 
14 877 573 (5)
 Glass earl effect beads mix
 tab-blisterbox 100g
 black/white

- **Bead mix** for a creative designing
- The different sizes, shapes and characteristics of glass and metallic beads in harmonious colour combinations give rise to individual and varied designs of sophisticated jewellery



 **14 878 102 (8)**
Glass bead mix
5 types, tab-card 40g
white



 **14 878 254 (8)**
Glass bead mix
5 types, tab-card 40g
blush pink



 **14 878 287 (8)**
Glass bead mix
5 types, tab-card 40g
classic red



 **14 878 314 (8)**
Glass bead mix
5 types, tab-card 40g
violet



 **14 878 374 (8)**
Glass bead mix
5 types, tab-card 40g
azure



 **14 878 376 (8)**
Glass bead mix
5 types, tab-card 40g
royal blue



 **14 878 428 (8)**
Glass bead mix
5 types, tab-card 40g
leaf green



 **14 878 429 (8)**
Glass bead mix
5 types, tab-card 40g
emerald



 **14 878 573 (8)**
Glass bead mix
5 types, tab-card 40g
black/white

- **Glass bead mix** for all kinds of purposes
- Different sizes and shapes
- Colour-assorted
- Suitable for all creative jewellery trends: e.g. weaving or threading





 
69 289 800 (5)
 Magic-Stretch, 0.5mm ø
 tab-bag 30m
 crystal



 
89 168 37 (10)
 Magic-Stretch
 0,5 mm, tap-bag. spool 5 m
 crystal



 
89 240 37 (10)
 Magic-stretch
 0,8 mm, tab-bag. spool 5 m
 crystal





 
69 290 800 (5)
 Magic-Stretch, 0.8mm ø
 tab-bag 30m
 crystal



 
89 168 01 (10)
 Magic-Stretch
 0,5 mm, tap-bag. spool 5 m
 black



 
89 240 01 (10)
 Magic-stretch
 0,8 mm, tab-bag. spool 5 m
 black



 
22 961 000 (10)
 Mobile phone chain Patch
 56x36x0.6mm, tab-bag 2pcs





15 410 000 (5)
CK Wooden beads Phone chain, FSC
100%
tab-box 1set



The mark of
responsible forestry

- DIY mobile phone chain set **Wooden Beads** for designing an **individual mobile phone chain**
- Practical and stylish mobile phone chain made from high-quality wooden beads and elegant decorative glass beads
- Easy to string yourself
- Universal, transparent, wafer-thin yet sturdy patch ensuring that the phone stays securely attached to the case
- Thanks to the lobster clasp, the mobile phone chain is easy to attach and detach

Contents:

120 raw wood beads, ø 10mm
3 raw wood beads, ø 15mm
11 Renaissance glass wax beads, snow-white, ø 10mm
25 Renaissance glass wax beads, pale pink, ø 8 mm
Natural threading silk, 2m
4 crimp beads
2 lobster clasps with ring
1 mobile phone chain patch
Instructions





15 404 000 (6)

Bead craft box "Shiny", 10.7cm ø
diff.colours+sizes, in floral box

- Bead craft box "Shiny" for stringing e.g. a bracelet, necklace or pendant
- Flower-shaped acrylic box with seven compartments for storing **colour-assorted beads and motifs** (e.g. heart, flower, dragonfly, faceted, etc.) in **shades of pink, lilac and silver**
- Different bead and hole diameters as well bead quantities



15 405 000 (6)

Bead craft box "Rainbow", 10.7cm ø
diff.colours+sizes, in floral box

- Bead craft box "Rainbow" for stringing e.g. a bracelet, necklace or pendant
- Flower-shaped acrylic box with seven compartments for storing **colour-assorted beads and motifs** (e.g. starfish, flower, faceted, etc.) in **rainbow colour shades**
- Different bead and hole diameters as well bead quantities



15 406 000 (6)

Bead craft box "Lovely", 10.7cm ø
diff.colours+sizes, in floral box

- Bead craft box "Lovely" for stringing e.g. a bracelet, necklace or pendant
- Flower-shaped acrylic box with seven compartments for storing beads of colourful **pastel shades**



15 407 000 (6)

Bead craft box "Joy", 10.7cm ø
diff.colours+sizes, in floral box

- Bead craft box "Joy" for stringing e.g. a bracelet, necklace or pendant
- Flower-shaped acrylic box with seven compartments for storing beads, stars and square-shaped alphabet beads of colourful **pastel shades**
- Different bead and hole diameters as well bead quantities



15 408 000 (4)

Bead craft case

27x18x2.8cm, diff.colours+sizes



- **Starter kit** for making e.g. bracelets, necklaces or pendants
- Acrylic case with carrying handle and snap lock
- Blister insert tray provides space and a clear overview of colour-assorted plastic beads and motifs (e.g. heart, flower, star, faceted, etc.)
- Different bead and hole diameters as well bead quantities



15 409 000 (4)

Bead craft box

27.8x12.1x13.1cm, diff.colours+sizes



- A great **starter kit** for making e.g. bracelets, necklaces or pendants
- Handy storage box with carrying handle, snap lock and removable insert-in compartment
- Colour-assorted plastic beads in **shades of pink, fuchsia and silver** and in various shapes: flower, heart, lettered, faceted, Heishi beads, etc
- Different bead and hole diameters as well bead quantities

Dimensions:

Insert-in element: 6 different compartments with the following dimensions: 1x 13.5x11.5x3 cm, 1x 11.5x5.2x3 cm, 2x 4x5.5x3 cm, 2x 3.5x5.5x3 cm

Bottom compartment (can be filled as desired): 27.5x11.8cm, 6 cm deep



16 058 999 (8)

Plastic beads Laughing face+Heart
6mm ø, tab-blister 40g
coloured



16 054 616 (8)

Plastic letters-beads, 6mm ø
round, tab-blister 40g
gold



16 054 999 (8)

Plastic letters-beads, 6mm ø
round, tab-blister 40g
coloured



16 056 999 (8)

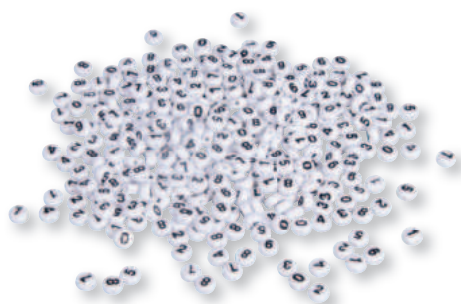
Plastic bead numbers, 6mm ø
tab-blister 40g
coloured



16 054 606 (8)

Plastic letters-beads, 6mm ø
round, tab-blister 40g
silver





16 056 102 (8)
Plastic bead numbers, 6mm Ø
tab-blister 40g
white



16 054 576 (8)
Plastic letters-beads, 6mm Ø
round, tab-blister 40g
black



16 054 102 (8)
Plastic letters-beads, 6mm Ø
round, tab-blister 40g
white



16 101 02 (8)
Plastic beads with letters, cubes
5x5 mm, blister card 40 g
white



16 053 102 (8)
Plastic letters-beads, 9mm Ø
round, tab-blister 40g
white



16 057 102 (8)
Plastic bead numbers Cube
5x5mm, tab-blister 40g
white



16 100 49 (8)
Plastic beads with letters, round
6 mm, blister card 40 g
mixed

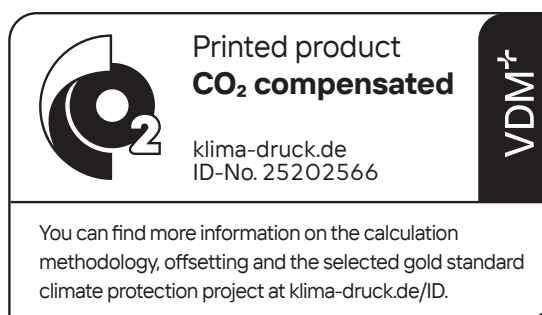


**BEING CREATIVE MAKES YOU HAPPY.
ANYTHING RELATED TO CREATIVITY,
WE JUST HAVE IT.**

B2B.Rayher.com



ENVIRONMENTALLY FRIENDLY PRODUCTION



CO₂- Compensation

Producing the Rayher catalogue all CO₂ emissions produced in the course of printing and processing are determined. By making an equal investment in a climate project according to the Gold Standard, the corresponding CO₂ emissions will be saved in the future and the Rayher catalogue will be CO₂ compensated this way.

Please note that in a few cases, some colours shown in our catalogue may differ from the original ones due to printing reasons.

Copyright: Rayher Hobby GmbH

90 751 000 (GB)

Rayher Hobby GmbH

Fockestraße 15 D-88471 Laupheim T +49 (0) 73 92 / 70 05-0 F +49 (0) 73 92 / 70 05-246

INFO@RAYHER.COM WWW.RAYHER.COM